

GRANADA II





Welcome to Granada II

Where every detail is crafted for your enjoyment and peace. Here, the green embrace of our gardens offers a tranquil retreat, Striking a harmonious balance, making every moment an opportunity for discovery and relaxation.



Inspired by Nature,
Designed for Life.

INTRODUCING

Mina Al Arab

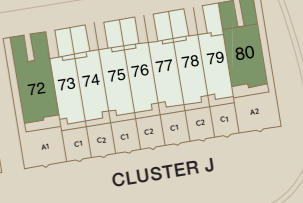
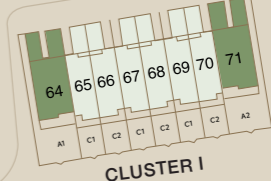
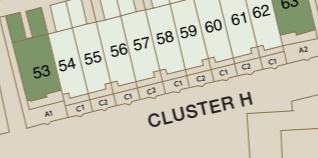
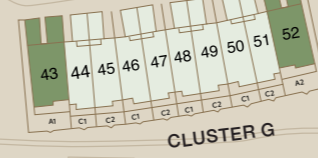
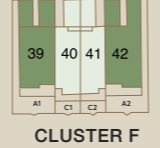
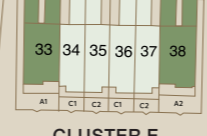
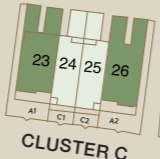
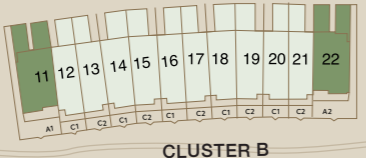
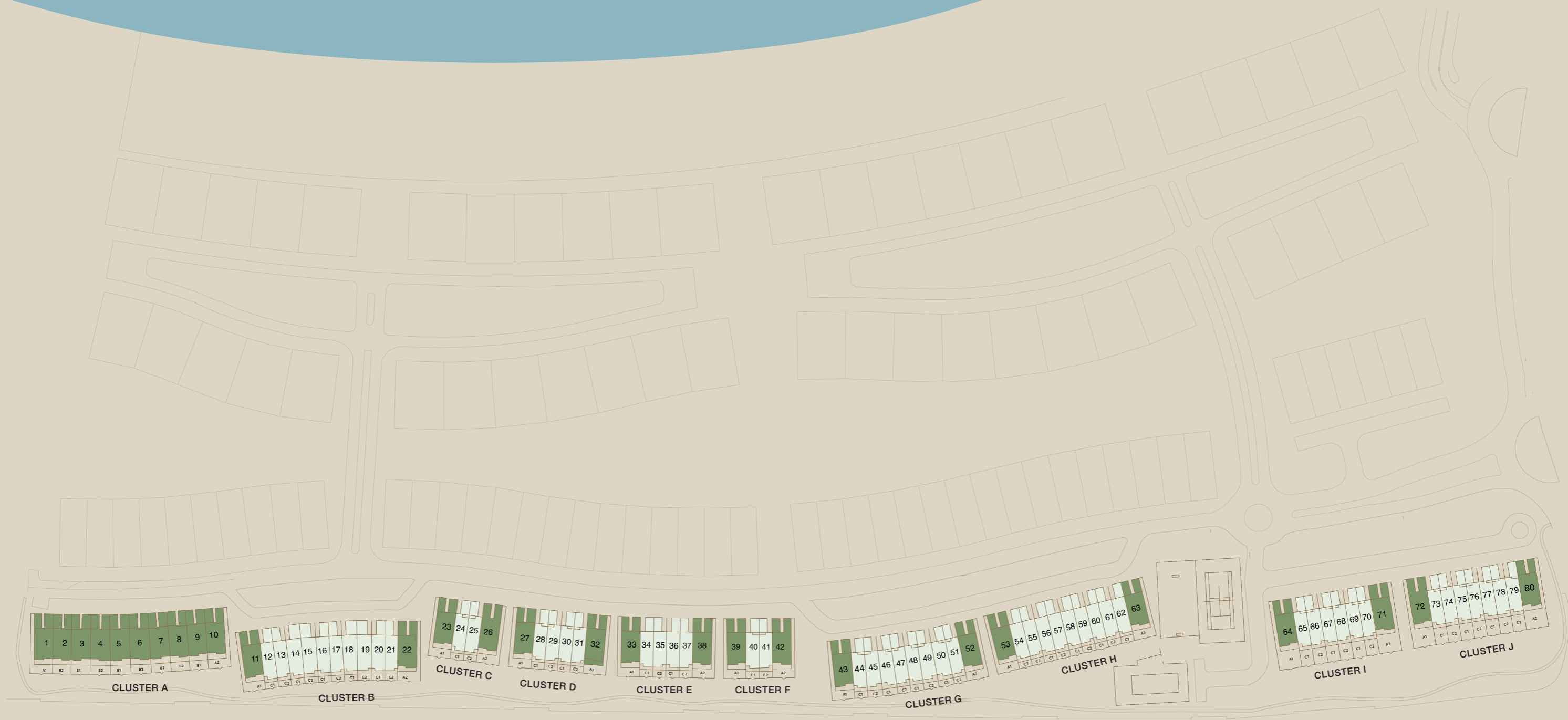
Located in the lush natural surroundings of the Ras Al Khaimah coastline, Mina Al Arab is a pristine getaway. Created with the surrounding environment in mind, Mina Al Arab aims to surround its residents with beauty, diversity and nature. The community, integrating lush parkland and coastal wetlands, aims to encourage a lifestyle that marries relaxation and healthy living.



- 01. GRANADA I
- 02. GRANADA II
- 03. LAGOON MARINA
- 04. RETAIL PLAZA
- 05. MALIBU VILLAS
- 06. FLAMINGO VILLAS
- 07. ECO LODGE
- 08. ANANTARA RESORT AND SPA
- 09. MARBELLA I VILLAS
- 10. MARBELLA II VILLAS
- 11. GATEWAY II RESIDENCES
- 12. INTERCONTINENTAL RESORT AND SPA
- 13. BAY RESIDENCES
- 14. ANGEL BAY
- 15. BAY VIEWS
- 16. CAPE HAYAT
- 17. PORTO PLAYA
- 18. NIKKI BEACH CLUB
- 19. BRANDED APARTMENTS
- 20. BRANDED VILLAS
- 21. QUATTRO DEL MAR
- 22. BERMUDA VILLAS
- 23. GATEWAY I RESIDENCES
- 24. THE HARBOUR



GRANADA II

MASTERPLAN



-  2 Bedroom Townhouses
-  3 Bedroom Townhouses





Architectural and Design Inspiration

The extension incorporates contemporary modern design and harmoniously blend with the traditional aesthetics of the original Granada community.

KEY DESIGN FEATURES

Spacious Interiors

Our townhouses offer generous living spaces that are both versatile and inviting, with layout inspired by what's worked best from our history of villa designs.

Modern Aesthetics

Clean lines, ample natural light, and open spaces, provide a fresh and airy feel that is both sophisticated and welcoming.

Outdoor Living

Private outdoor areas extend the living space, allowing residents to enjoy the beautiful surroundings and nature rich landscaping.



Community
Facilities



A Green Sanctuary

Wonder into our lush green spaces, where tranquillity is all around you. The community gardens and double-lined trees along our jogging tracks invite you into a serene world, promoting well-being and a peaceful escape into nature.



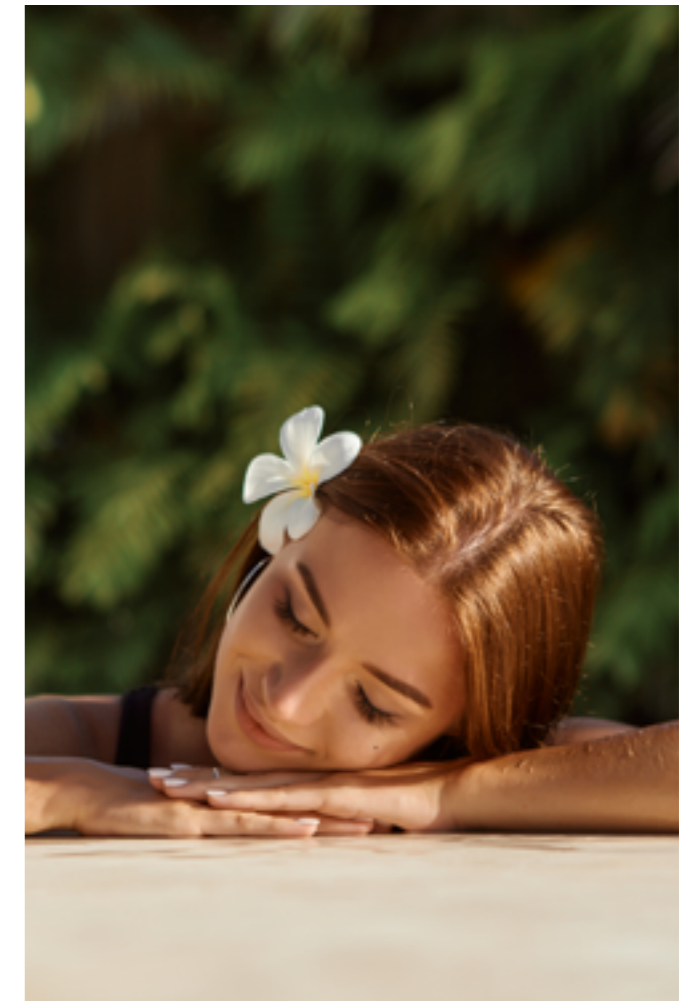
Designed for Family Moments

We've envisioned a community through the eyes of both parents and children from laughter-filled playgrounds to endless areas to safely adventure. A place where children can explore, and parents can relax.



Elevate Your Game

Embrace an active lifestyle with our sports facilities. From the thrill of scoring goals on the football pitch to perfecting your serve on the tennis courts, Granada offers endless opportunities for fitness and fun.



Hear Water's Calm

Beautifully designed water features add to the aesthetic appeal of the community, creating tranquil spaces for relaxation and contemplation.

A close-up photograph of a woman's face, partially obscured by vertical green leaves. The woman has long dark hair and blue eyes. The lighting is soft and natural, highlighting her features. The text 'Welcome to a Greener Tomorrow' is overlaid in white serif font on the left side of the image.

Welcome to a
Greener Tomorrow



Refined Living Spaces and Interiors

Elegant Finishes

Each townhouse features high-quality finishes, with attention to detail in every aspect, from the flooring to the ceiling fixtures, ensuring an airy feel throughout the home.

Space to Breathe, Space to Dream

Optimized for comfort and layout, offering open living areas and cosy bedrooms that serve as retreat for residents.











Floor
Plans

Two Bedroom Townhouses

Perfect for individuals or small families seeking a blend of sophistication and functionality. These townhouses are meticulously crafted with attention to detail, featuring open-plan living spaces that flow seamlessly into private outdoor havens.

Three Bedroom Townhouses

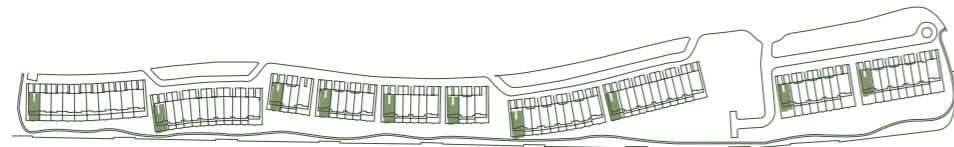
Perfect for larger families or those desiring extra space, the three-bedroom layouts provide additional bedroom and larger living areas.

GRANADA II

3 BEDROOM TOWNHOUSE TYPE A1



	SQFT	CLUSTER	UNIT NO
Ground Floor Area	1077.25	A	1
First Floor Area	1089.85	B	11
Balcony Area	66.20	C	23
Total GFA	2233.83	D	27
Plot Area	2619-3170	E	33
		F	39
		G	43
		H	53
		I	64
		J	72



Ground Floor



First Floor

Disclaimer: Floor plan numbers, square footage, and floor plans are approximate. Final dimensions, square footing and floor plans may vary or may be mirrored. Balcony area varies depending on location of unit on the floor

GRANADA II

3 BEDROOM TOWNHOUSE TYPE A2



	SQFT	CLUSTER	UNIT NO
Ground Floor Area	1077.79	A	10
First Floor Area	1089.85	B	22
Balcony Area	66.20	C	26
Total GFA	2233.83	D	32
Plot Area	2760-3170	E	38
		F	42
		G	52
		H	63
		I	71
		J	80



Ground Floor



First Floor

Disclaimer: Floor plan numbers, square footage, and floor plans are approximate. Final dimensions, square footing and floor plans may vary or may be mirrored. Balcony area varies depending on location of unit on the floor

GRANADA II

3 BEDROOM TOWNHOUSE TYPE B1



	SQFT	CLUSTER	UNIT NO
Ground Floor Area	1063.58	A	3,5,7,9
First Floor Area	1076.07		
Balcony Area	62.20		
Total GFA	2205.42		
Plot Area	2281.63 - 2421.77		



Disclaimer: Floor plan numbers, square footage, and floor plans are approximate. Final dimensions, square footing and floor plans may vary or may be mirrored. Balcony area varies depending on location of unit on the floor



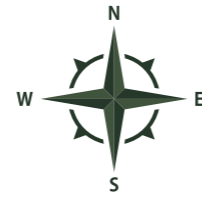
Ground Floor



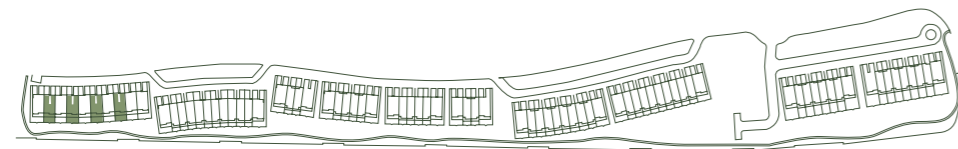
First Floor

GRANADA II

3 BEDROOM TOWNHOUSE TYPE B2



	SQFT	CLUSTER	UNIT NO
Ground Floor Area	1063.58	A	2,4,6,8
First Floor Area	1076.07		
Balcony Area	66.20		
Total GFA	2205.42		
Plot Area	2281.63 - 2432.32		



Disclaimer: Floor plan numbers, square footage, and floor plans are approximate. Final dimensions, square footing and floor plans may vary or may be mirrored. Balcony area varies depending on location of unit on the floor



Ground Floor



First Floor

GRANADA II

2 BEDROOM TOWNHOUSE TYPE C1



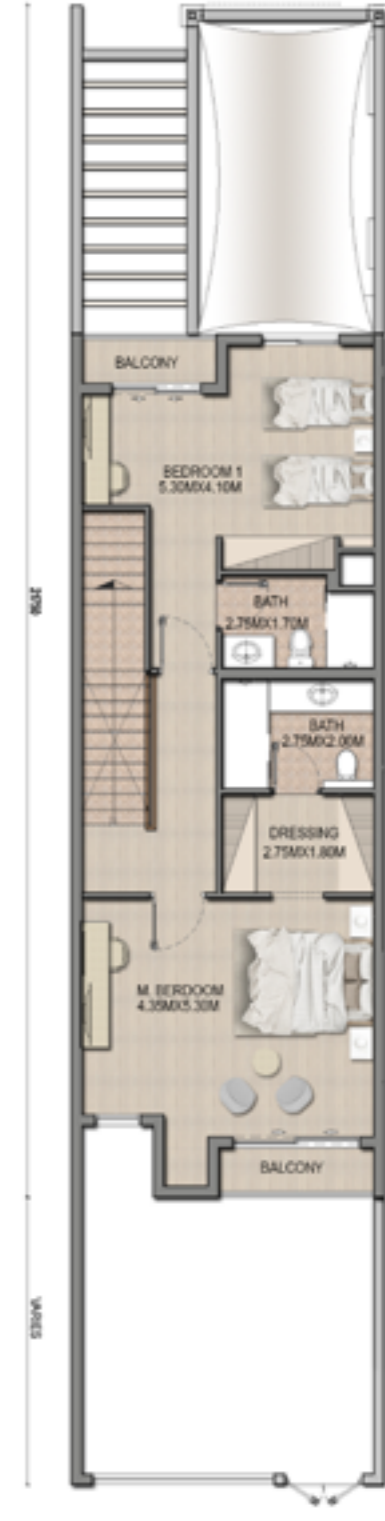
	SQFT	CLUSTER	UNIT NO
Ground Floor Area	912.78	B	12,14,16,18,20
First Floor Area	850.78	C	24
Balcony Area	62.11	D	28,30
Total GFA	1825.67	E	34,36
Plot Area	1549.90 - 1835.25	F	40
		G	44,46,48,50
		H	54,56,58,60,62
		I	65,67,69
		J	73,75,77,79



Disclaimer: Floor plan numbers, square footage, and floor plans are approximate. Final dimensions, square footing and floor plans may vary or may be mirrored. Balcony area varies depending on location of unit on the floor



Ground Floor



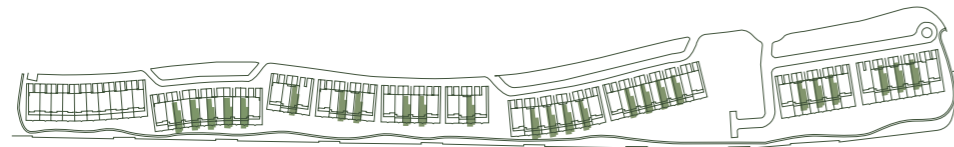
First Floor

GRANADA II

2 BEDROOM TOWNHOUSE TYPE C2



	SQFT	CLUSTER	UNIT NO
Ground Floor Area	912.78	B	13,15,17,19,21
First Floor Area	850.78	C	25
Balcony Area	62.11	D	29,31
Total GFA	1825.87	E	35,37
Plot Area	1565.18 – 1835.25	F	41
		G	45,47,49,51
		H	55,57,59,61
		I	66,68,70
		J	74,76,78



Disclaimer: Floor plan numbers, square footage, and floor plans are approximate. Final dimensions, square footing and floor plans may vary or may be mirrored. Balcony area varies depending on location of unit on the floor



Ground Floor



First Floor









DISCOVER

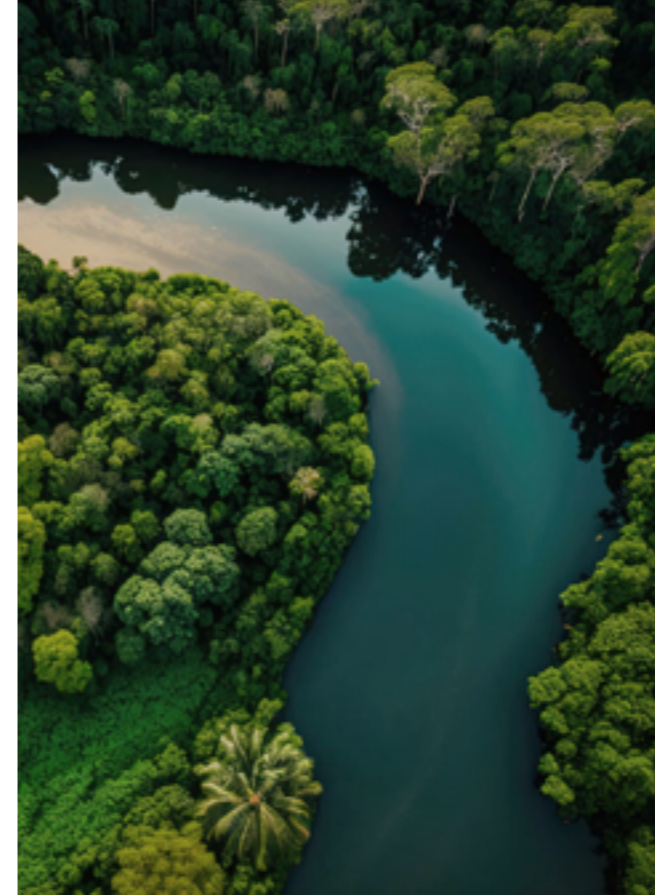
MINA AL ARAB

Embrace the epitome of waterfront luxury living at Mina Al Arab, a community where tranquility harmonizes with vibrant life, surrounded by stunning landscapes and breathtaking waterfront views.



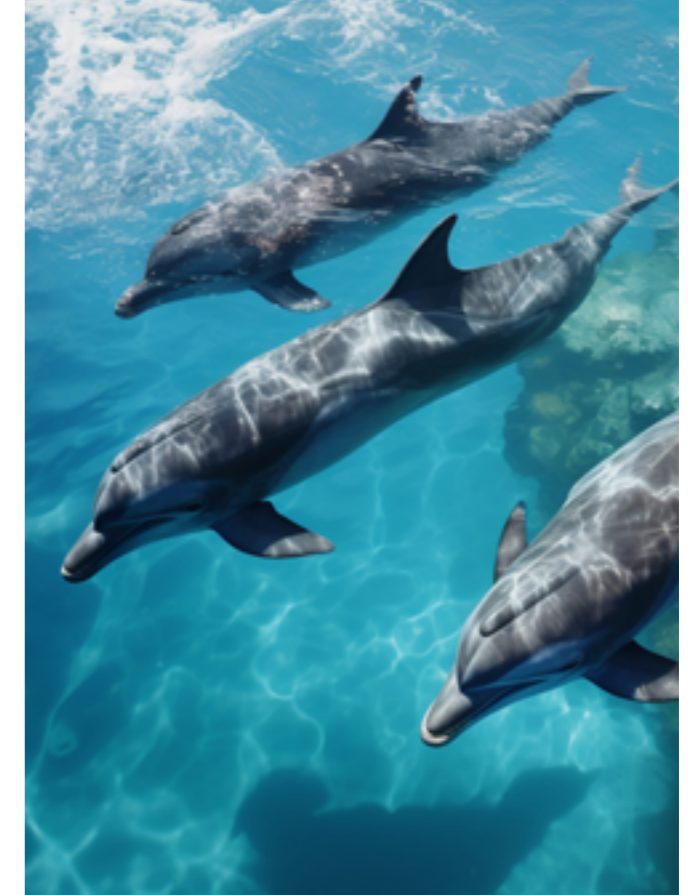
NATURE'S WONDER

Immerse yourself in the heart of nature, where a rich tapestry of wildlife thrives, and experience the tranquillity of life among +7000 trees, a testament to our commitment to a thriving natural habitat.



MANGROVES

We take pride in our lush mangroves, the vital green sanctuaries that cradle our diverse wildlife. These protected wetlands are more than just scenery; they're active ecosystems where ecological balance and beauty converge.



WILDLIFE

Here, shores become nurseries for nesting turtles, waters dance with dolphins, and a kaleidoscope of fish colors the depths. Gaze skyward to witness the graceful ballet of migrating flamingos and listen to the symphony of marine life.



STEP INTO HAYAT ISLAND

Experience the unique blend of urban vibrancy and beachside tranquility at Hayat Island, the pulse of Mina Al Arab, offering a rejuvenated lifestyle like no other.



NIKKI BEACH HOTEL & SPA

EXCLUSIVE ELEGANCE

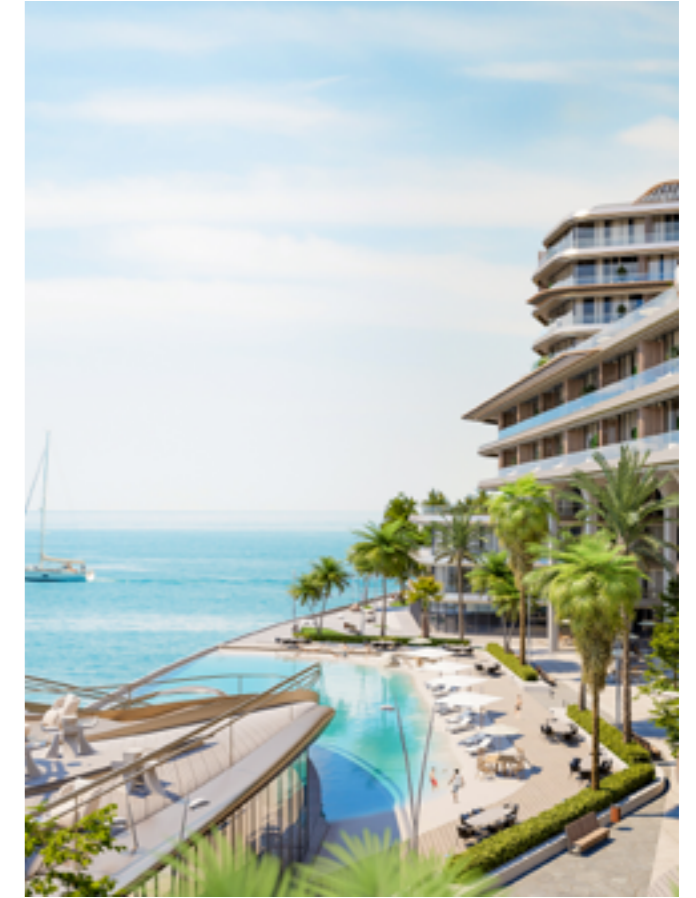
Experience the unique blend of luxury, style, and beachfront serenity at Nikki Beach Hotel & Spa, Ras Al Khaimah's exclusive retreat in Mina Al Arab, where every moment is a celebration of chic relaxation and vibrant beach culture.



LUXURIOUS ESCAPES

AT INTERCONTINENTAL AND ANANTARA RESORTS

Indulge in the luxurious island life at InterContinental Mina Al Arab and the eco-luxury of Anantara Mina Al Arab Resort, each offering an unparalleled experience of relaxation and adventure.



THE FUTURE OF RAS AL KHAIMAH

Witness Ras Al Khaimah's transformative journey, poised to redefine luxury and entertainment with spectacular new developments, establishing the emirate as a destination for luxury and excitement.



An evolving Emirate

Nestled between the mountains of Jebel Jais and the wide open ocean, Ras Al Khaimah, a vibrant UAE emirate is packed with natural beauty, culture and heritage. Over the years, it has become a prominent destination.



We believe in the power of vision, honoring the legacy of our forefathers, And understand our role in the emergence of RAK.

Inspired by the wonders of our landscapes, of picturesque mountains and mysterious deserts, crystal clear waters and golden sands, an abundance of natural mangroves & nature, a city of abundant culture and heritage, a foundation from which we thrive.

We are energized by people and communities, brought to life through experiential place – making, creating exceptional destinations, where lifestyles take central stage, delivering development with a purpose.

UNITED ARAB EMIRATES

A vibrant mix of stability, growth, and cultural diversity, making it a prime destination for investors looking for both security and luxury.

Ras Al Khaimah, in particular, stands out with its stunning natural scenery and growing economy. It's not just a strategic business location, but a gateway to nature and an enhanced lifestyle.

LIFE IN RAS AL KHAIMAH

Step into a world where nature blends with elegance. Experience beautiful beaches, five-star resorts, and peaceful pace of living. Perfect for investors looking for the best of both worlds.

GLOBALLY CONNECTED

Car journey times to:

✈️ Dubai International Airport
45 minutes

✈️ Ras Al Khaimah International Airport
15 minutes







رأس الخيمة العقارية
RAK PROPERTIES

For more information please call **800 40 20**
Visit us online at **rakproperties.ae** or any sales center across the UAE.