

**TRAFFORD**  
**GARDENS** **MCR**

PART OF AN **EXCITING**  
MASTERPLAN FOR OLD  
TRAFFORD, **TRAFFORD**  
**GARDENS** IS SETTING  
THE BAR FOR THE  
**REINVENTION** OF THIS  
MANCHESTER DISTRICT.



Computer Generated Image





Computer Generated Image

# A NEW VISION FOR MODERN CITY LIVING.

At the heart of the proposed transformation of Trafford's Civic Quarter – an ambitious masterplan to deliver 4,000 new homes and 5,000,000 sqft of work space – Trafford Gardens is a superbly finished collection of 1, 2 and 3 bedroom apartments.

The area is already one of Manchester's most popular districts, thanks to its blend of acclaimed schools, amazing bars and restaurants, superb retail and great connectivity. This new blueprint for Old Trafford is set to make it even more so.

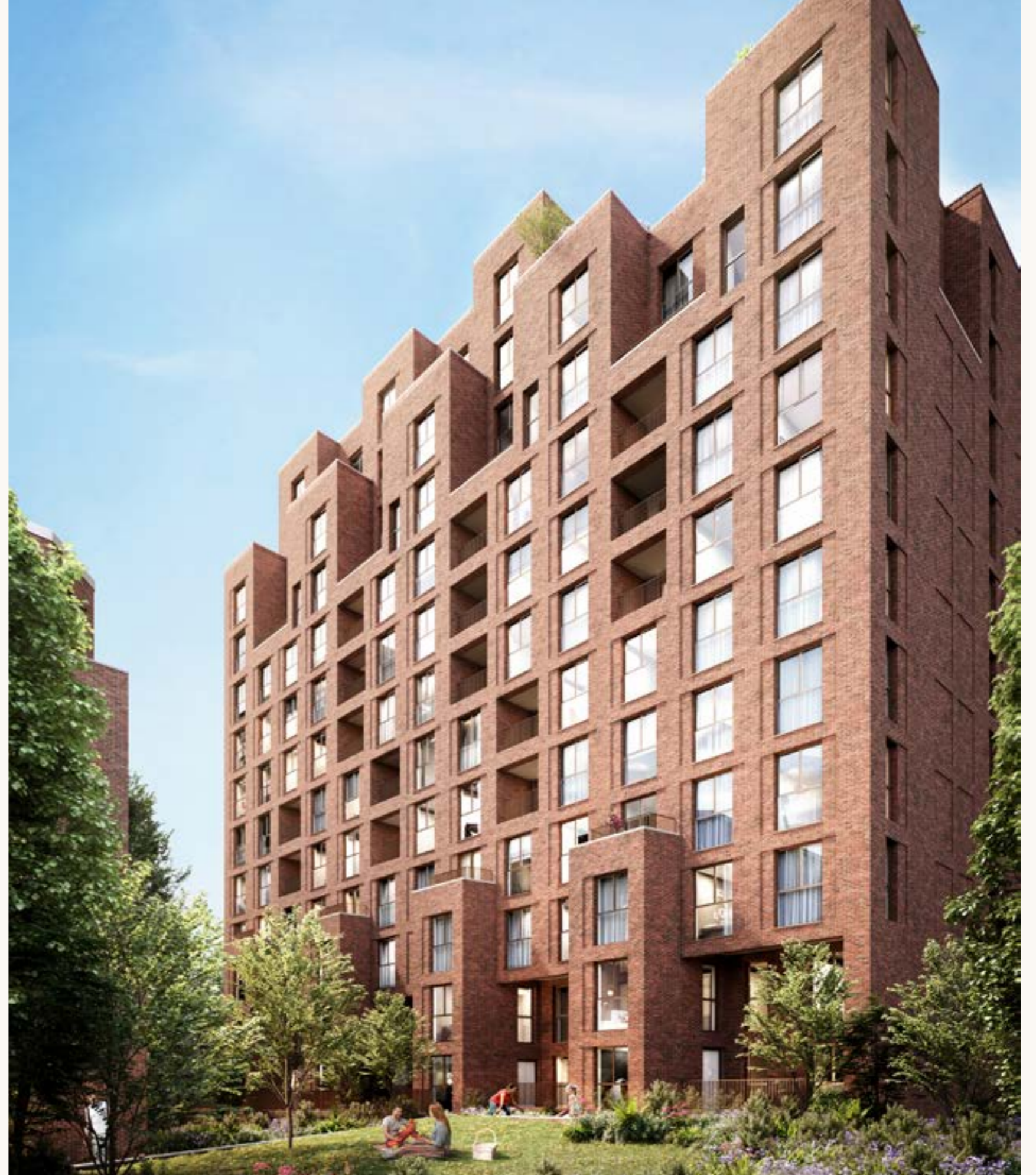


# WELCOME TO TRAFFORD GARDENS.

---

Trafford Gardens is a new build development of striking design set to house a collection of 116 apartments. Occupying a prime position in Manchester City Centre this exciting property offers easy access to all that this world-class city has to offer.

Tailored to meet the needs of the rapidly growing young professional population, Trafford Gardens offers generous living space, luxurious balconies, and superior quality throughout. Ideal for homeowners or investors, this is truly a rare opportunity.



Computer Generated Image





# WELCOME TO THE CAPITAL OF THE NORTH.

Second only to London in terms of the scale of its economy, Manchester is without question the capital of the north. With its growing popularity as a relocation destination, it's attracting more and more blue-chip organisations, most notably the BBC who moved to MediaCityUK in Salford. There are plenty of other firms who have joined them too, including BUPA, CGI, Freshfields Bruckhaus Deringer LLP, ITV and Kellogg Group.

Add to this, Manchester's cultural cache. As well as its legendary music scene, spawning bands like Oasis, The Smiths and New Order, it's home to two of the world's greatest football clubs, Manchester City and Manchester United. All of which underlines its status as a northern powerhouse that's ripe for investment.



# REASONS TO INVEST IN MANCHESTER.



## 1.25M

Jobs, ranking second in the UK for employment

*Dataloft, Centre of Cities*



## £73B

Economy, the UK's 2nd largest

*Dataloft, Centre of Cities*



## 72%

Increase in new build sale prices since 2015

*Dataloft, Land Registry*



## 71 MINS

To London when HS2 completes

*Dataloft, Centre of Cities*



## 28.8%

Growth for North West England house price, 5-year forecast

*Dataloft, Savills*



## 2.75M

People living in Greater Manchester in 2021

*World Population Reviews*





# INTRODUCING YOUR NEW NEIGHBOURHOOD.

- 1 University Academy 92
- 2 Old Trafford Cricket Ground
- 3 White City Retail Park
- 4 Old Trafford Football Ground
- 5 Hotel Football
- 6 Salford Quays
- 7 Salford Quays Watersports Centre
- 8 MediaCityUK
- 9 The Lowry
- 10 Imperial War Museum
- 11 ITV Studios
- 12 BBC



# LIFE IN TRAFFORD.

Seamlessly marrying a wealth of heritage – it's home to over 200 listed buildings – with a thoroughly contemporary outlook, Trafford has grown to become one of Manchester's most desirable and vibrant areas.

Its thriving bar and food scene is exactly as you'd expect from a metropolitan hotspot. The retail provision is just as impressive, with the Trafford Centre's stylish stores including the first Selfridges outside of London. What's more, the rest of Manchester is just moments away.



► The Trafford Centre



## HOME

To Old Trafford Stadium  
Manchester United FC

[traffordcity.co.uk](http://traffordcity.co.uk)



## 17,600

People employed  
in Trafford City

[traffordcity.co.uk](http://traffordcity.co.uk)



## £350M

Invested into the Trafford  
Park Metrolink extension

[traffordcity.co.uk](http://traffordcity.co.uk)

Old Trafford Stadium ◀





# FROM BITES TO EAT TO DESIGNER FASHIONS YOU'LL FIND IT ALL.



Style is something that's always been close to Manchester's heart. As the fashionable crowd's that embrace its eclectic nightlife stylishly demonstrate. The city is packed with well known and upcoming brands. The White City Retail Park just a minute's walk away. The Trafford Centre and Lowry Designer Outlet are a short tram ride away. As are the high street destinations of Exchange Square and Market Street, the designer labels of King Street, Spinningfields and New Cathedral Street, and The Northern Quarter's array of independent boutiques.



The bar and restaurant scene is equally diverse, with 650 licensed venues in the city centre alone. A culinary world tour awaits your tastebuds. With its Michelin star, Mana's modern British menu is arguably the city's highpoint, but there are plenty of other contenders hot on its heels. Add to this a host of sleek cocktail bars, heaving clubs and classic pubs, and whatever kind of night out you're looking for, it's all here to be enjoyed.





# THERE'S NO QUESTION, MANCHESTER'S SPORTING PROWESS IS **SECOND-TO-NONE.**

---

You can't talk about Manchester without mentioning sport. Trafford is of course, host to Manchester United's world renowned stadium, Old Trafford. To avoid rivalries spilling over, it's also important to mention the city's other footballing powerhouse, Manchester City. Even closer to Trafford Gardens is Lancashire Cricket Club's home, Old Trafford Cricket Ground, a regular venue for the Cricket World Cup.





# NEW LANDMARKS ON YOUR DOORSTEP.

---

Bounded by Manchester city centre, Salford Quays and MediaCityUK, Trafford offers the best of all worlds. With every aspect of life catered to – work, culture, study and entertainment – you won't find a better place to call home. In the same way Manchester's spirit of innovation helped fuel the UK's

industrial revolution, today it's reinventing what modern city living looks like. Salford's rebirth as a media hub and lifestyle district is a prime example. The masterplan for Trafford is set to continue the story and write a new chapter in Manchester's history.







## Salford Quays

Just a seven minute drive from Trafford Gardens is Salford Quays, Britain's hottest short-break destination. Packing everything you can do in a big city into one spectacular square mile – shopping, sport, art, drama, history and truly world-class architecture – it's the perfect place to unwind.



## MediaCityUK

An international hub for creativity, technology and innovation, MediaCityUK is leading the way in attracting internationally renowned organisations to Manchester. As well as being home to the likes of the BBC, ITV, Ericsson, dock10 and Kellogg Group, it's a destination in its own right with an eclectic arts and events programme that runs all year long.



# THE EDUCATED CHOICE.

---



Home to The University of Manchester, Manchester Metropolitan University, University of Salford, University of Bolton, University Academy 92 and the Royal Northern College of Music, Manchester has one of the largest and most diverse student populations in

Europe. Over 60% of graduates who study in the North West stay in the area to work, with 46% staying specifically in Manchester. A fact that's testament to the lifestyle and career prospects the city can offer.



## 104,000

Students study at Manchester's five Higher Education institutions

[investinmanchester.com](https://investinmanchester.com)



## Over 50%

Graduate retention rate

[workplaceinsight.net](https://workplaceinsight.net)

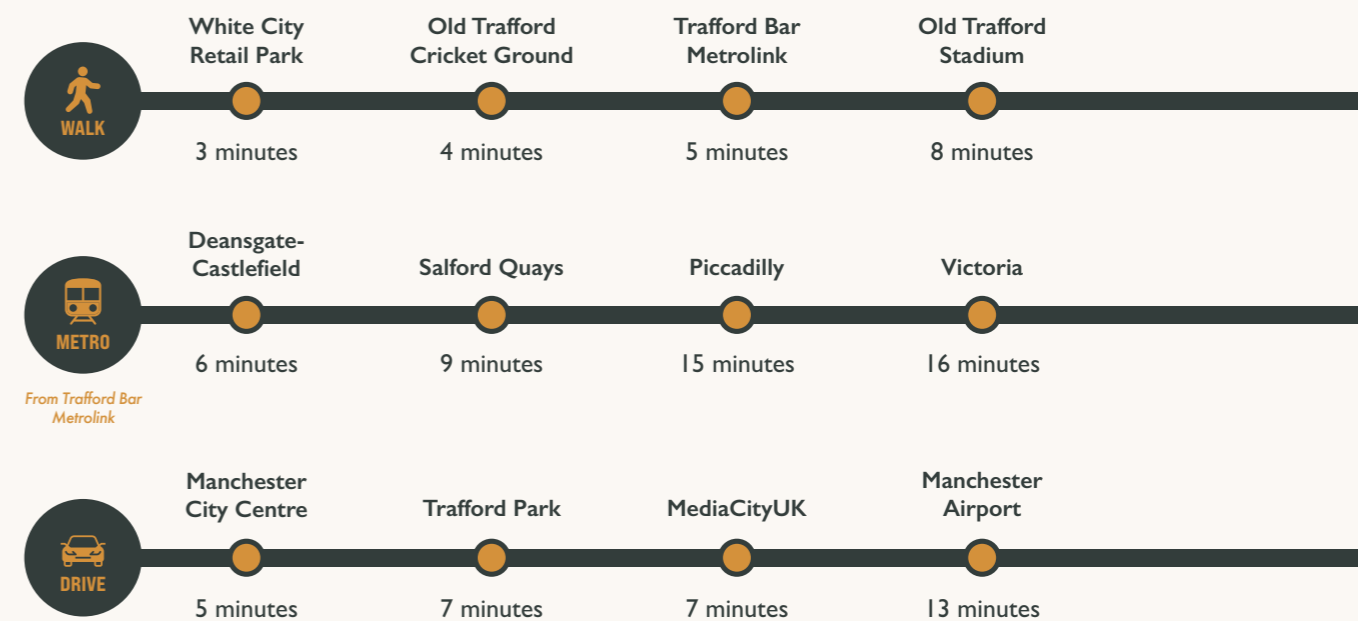




# PERFECTLY LOCATED FOR EXPLORING THE LOCAL AREA.



While some of the best amenities Trafford has to offer are just a stone's throw away, with Manchester's unbeatable Metrolink network and Trafford Garden's road connectivity, nowhere is hard to reach.





# THE REST OF THE UK AND THE WORLD IS AT YOUR FINGERTIPS.

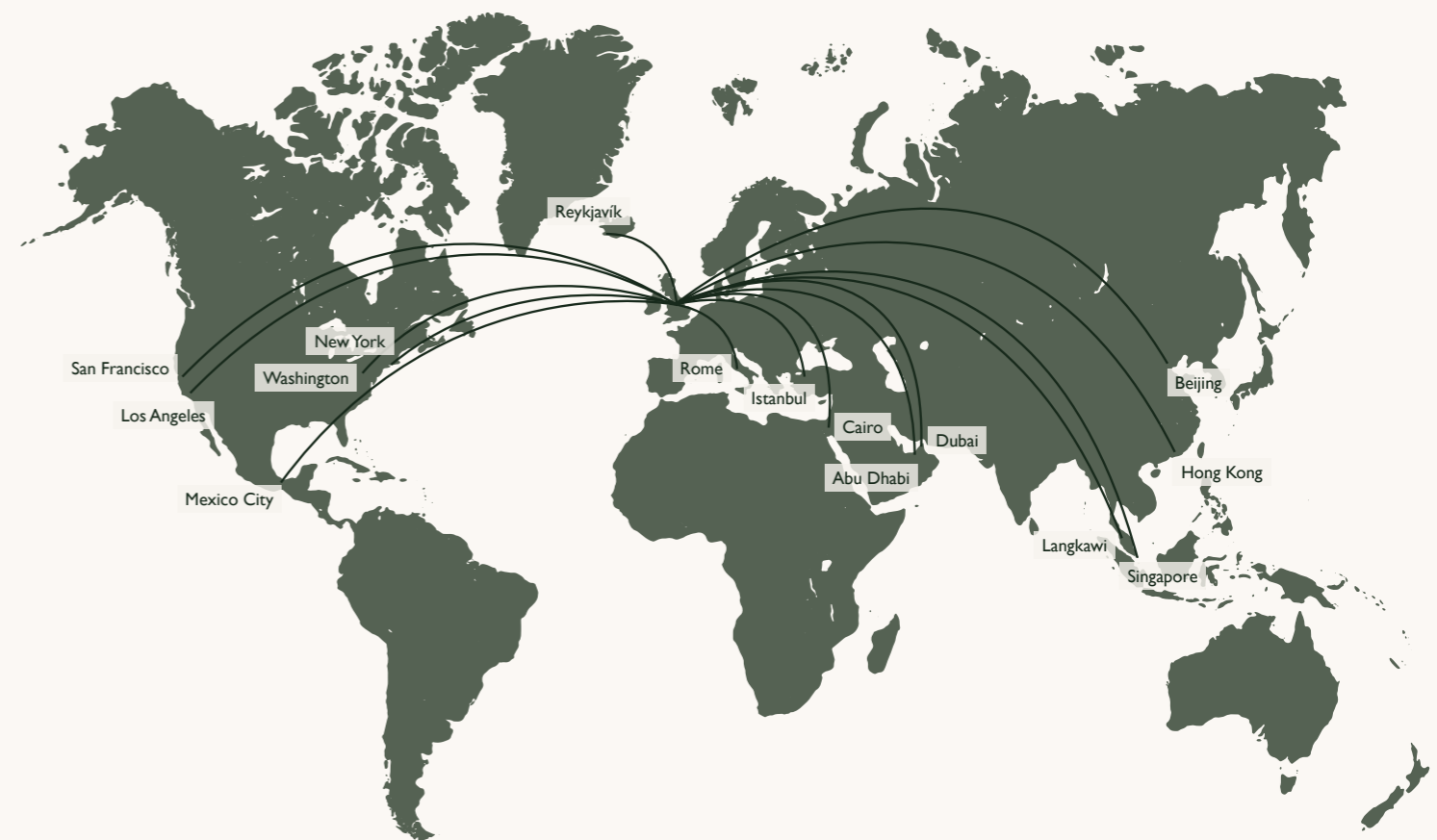
## By Air

Manchester Airport is the UK's principal international gateway outside of London, with over 70 airlines flying to over 200 destinations worldwide.

Some 29 million passengers pass through it each year a number that will increase as its accessibility is improved by HS2.

London	1 hour
Beijing	12 hours
New York	8 hours
Dubai	8 hours

[manchesterairport.co.uk/destinations-and-guides/a-z-list-of-destinations/](http://manchesterairport.co.uk/destinations-and-guides/a-z-list-of-destinations/)



## By Rail

Already well connected to the rest of the UK HS2 is set to slash travel times from Manchester to other key UK destinations. As well as

these significant savings, it's also set to provide from welcome relief to the current Manchester transport system.

From Manchester	Current	HS2
To Birmingham	86 mins	58 mins
To Leeds	55 mins	33 mins
To Liverpool	50 mins	35 mins
To London	126 mins	71 mins

[hs2.org.uk](http://hs2.org.uk)



# WHY INVEST IN TRAFFORD GARDENS?

---

Trafford Gardens is an ideal buy-to-let opportunity.

The property benefits from a rare blend of high rental demand, local regeneration, connectivity, and excellent value.

## RENTAL DEMAND

As the unofficial Capital of the North, Manchester is a chief beneficiary of the pricing pressures found in London. More than one million people plan to leave London before they turn 33\* as residential and commercial prices in the capital continue to soar. Key regional cities such as Manchester are experiencing rapid population growth which is placing upward pressure on their relatively affordable rental and property markets.

Rents in Manchester are up 20% year on year to June 2023, and property prices across the city are up 4.9%\*\* .The demand for high-quality rental accommodation represents an outstanding opportunity for buy-to-let investors.

## LOCATION AND CONNECTIVITY

Old Trafford bridges the City Centre and Salford Quays. This puts Trafford Gardens at the crossroads of this vibrant city. Importantly, the location provides convenient access to all of the major employment centres of Manchester - ideal for young professional renters. With the Trafford Bar tram stop just 300m away, all of the key professional, tourist, and educational destinations of Manchester are less than 20 minutes journey. With the University of

Manchester being only 12 minutes away, Media City 15 minutes, and St Peter's Square (the geographic centre of the city) is just 10 minutes away.

## VALUE AND RETURNS

Trafford Gardens offers exceptional value for potential investors. The combination of highly attractive pricing and strong local rental values is set to produce an average yield of over 6% net.

The continued pressures of growing property demand and constrained supply will benefit those investing off-plan, as their properties are forecast to increase in value with limited capital employed.

The strength of the local market means that Trafford Gardens is an outstanding opportunity for those considering a short, medium or long-term hold. With short-term gains to be had thanks to capital appreciation, and sustained rental demand delivering stable long-term returns.

It is rare to find a property investment that benefits from the full range of growth drivers.

Whether this is your first buy-to-let, or an expansion of an existing portfolio, Trafford Gardens is an opportunity not to be missed.





Computer Generated Image

**DISCOVER  
YOUR  
PERFECT  
HOME.**





Kitchen/ Living/ Dining (1 Bed)

Computer Generated Image





Kitchen/ Living/ Dining (2 Bed)

Computer Generated Image





Living/ Dining (2 Bed)

Computer Generated Image





Kitchen/ Living/ Dining (3 Bed)

Computer Generated Image





Living Area (3 Bed)

Computer Generated Image





Bedroom (1 Bed)

Computer Generated Image





Bedroom (2 Bed)

Computer Generated Image





Bedroom (3 Bed)

Computer Generated Image





Bathroom



# SPECIFICATION.

## KITCHENS

- Matt finish designer kitchen with soft-closing drawers
- Square edge quartz worktop with matching upstand
- Stainless steel single sink with chrome monobloc tap
- Integrated appliances including:
  - 600mm electric induction hob
  - Single stainless steel oven
  - Fridge freezer
  - Dishwasher
- Extractor hood

## BATHROOMS & ENSUITES

- Contemporary bathroom suite with ceramic wall tiling
- WC with concealed cistern, soft-close seat and polished chrome flush plate
- Wall-mounted wash basin with chrome monobloc tap
- Mirror
- White shaver point
- Electric stainless steel towel rail
- Chrome finish deck mounted shower fittings
- Fixed glazed shower screen

## FLOORING & FINISHING TOUCHES

- Amtico acoustic backed flooring to the kitchen, living and dining areas, hallways and stores
- Wool twist carpet to bedrooms
- Ceramic floor tiling to bathrooms and ensuites
- Matt emulsion painted walls and ceilings
- Wood veneer front door with brushed stainless steel ironmongery
- White internal doors with brushed stainless steel ironmongery
- Architraves and skirting finished in white

## MECHANICAL & ELECTRICAL FITTINGS

- Electronically programmed heating and hot water system
- Audio/visual entry phone system
- Media / aerial plate including telephone point to living area
- Recessed LED downlights with feature pendant lighting to certain areas
- High level sockets and switches in brushed stainless steel
- Low level sockets and switches in white



## EXTERNAL

- Balconies with concrete tiled flooring and metal balustrades
- Landscaped grounds
- Communal roof garden

## GENERAL

- Interior designed entrance lobby
- Multi-use Residents' Lounge
- Secure bike storage and car park
- Individual lockable mailboxes
- 24-hr concierge

## WARRANTY

- 10-year warranty with ICW

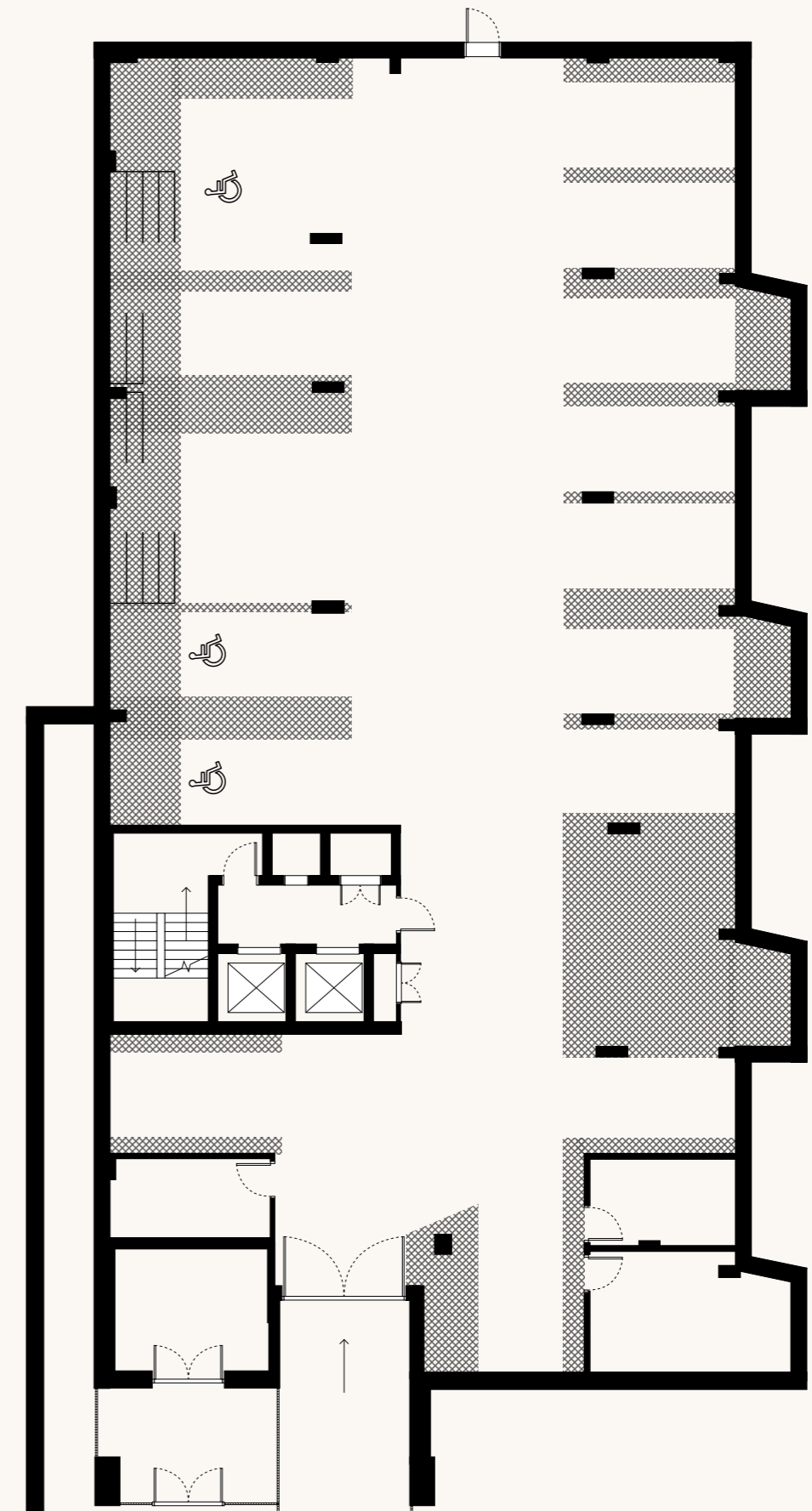


These details are intended to give a general indication of the proposed specification. The developer operates a policy of continuous product development and reserves the right to alter any part of the development specification at any time. Where brands are specified the developer reserves the right to replace the brand with another of equal quality or better. Imagery is for illustrative purposes only.



FIND YOUR  
FAVOURITE  
FLOORPLANS.

# BASEMENT

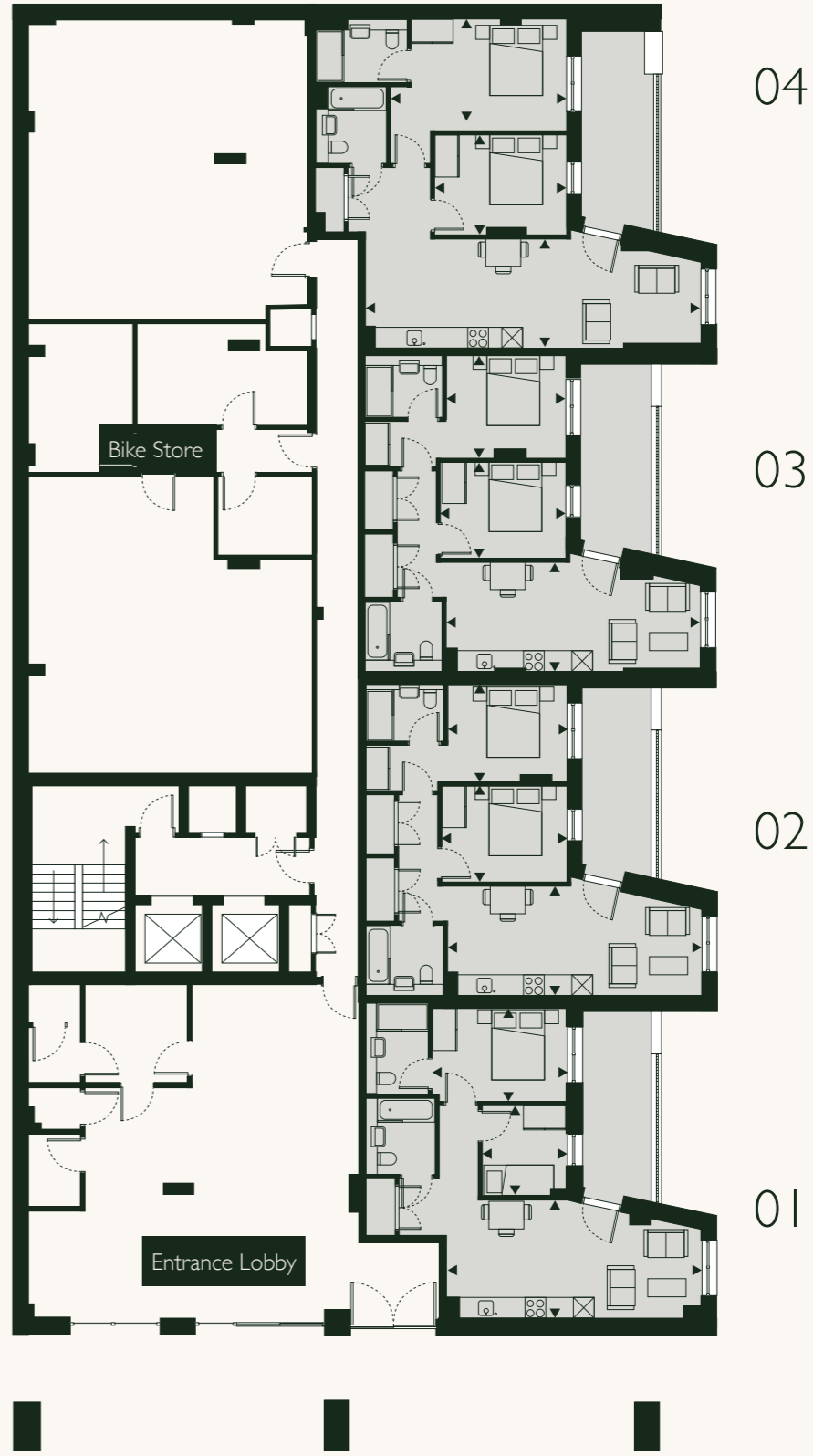


Please note, floorplans and dimensions are taken from architectural drawings and are for guidance only. Dimensions stated are within a tolerance of plus or minus 150mm. Overall dimensions are usually stated and there may be projections into these. Kitchen and bathroom layouts are indicative only.



# GROUND

**KEY**  
 02 Bed



## Apartment 01

Kitchen/Living/Dining	3.4 x 7.1m	11'2" x 23'4"
Bedroom 1	2.8 x 3.9m	9'2" x 12'10"
Bedroom 2	2.6 x 2.5m	8'6" x 8'2"
Terrace	9.1.m <sup>2</sup>	97.8ft <sup>2</sup>
TIA	56.7m <sup>2</sup>	610.4ft <sup>2</sup>

## Apartment 02

Kitchen/Living/Dining	3.3 x 7.2m	10'10" x 23'8"
Bedroom 1	2.8 x 3.5m	9'2" x 11'6"
Bedroom 2	2.7 x 3.8m	8'10" x 12'6"
Terrace	9.2m <sup>2</sup>	98.8ft <sup>2</sup>
TIA	62.5m <sup>2</sup>	672.2ft <sup>2</sup>

## Apartment 03

Kitchen/Living/Dining	3.2 x 7.2m	10'6" x 23'8"
Bedroom 1	2.9 x 3.5m	9'6" x 11'6"
Bedroom 2	2.7 x 3.8m	8'10" x 12'6"
Terrace	9.0m <sup>2</sup>	96.8ft <sup>2</sup>
TIA	62.6m <sup>2</sup>	673.3ft <sup>2</sup>

## Apartment 04

Kitchen/Living/Dining	3.1 x 9.5m	10'2" x 31'2"
Bedroom 1	3.1 x 5.1m	10'2" x 16'9"
Bedroom 2	2.9 x 3.9m	9'6" x 12'10"
Terrace	9.3m <sup>2</sup>	99.6ft <sup>2</sup>
TIA	73.6m <sup>2</sup>	791.9ft <sup>2</sup>

Please note, floorplans and dimensions are taken from architectural drawings and are for guidance only. Dimensions stated are within a tolerance of plus or minus 150mm. Overall dimensions are usually stated and there may be projections into these. Kitchen and bathroom layouts are indicative only.



# FLOOR 01 KEY

01 Bed 02 Bed 03 Bed



## Apartment 05

Kitchen/Living/Dining	3.0 x 7.9m	9'10" x 25'11"
Bedroom 1	2.8 x 5.9m	9'2" x 19'4"
TIA	46.5m <sup>2</sup>	500.7ft <sup>2</sup>

## Apartment 07

Kitchen/Living/Dining	3.5 x 7.9m	11'6" x 25'11"
Bedroom 1	2.7 x 4.8m	8'10" x 15'9"
Bedroom 2	2.7 x 4.5m	8'10" x 14'9"
TIA	70.8m <sup>2</sup>	762.4ft <sup>2</sup>

## Apartment 09

Kitchen/Living/Dining	3.4 x 7.4m	11'2" x 24'3"
Bedroom 1	2.9 x 3.1m	9'6" x 10'2"
Bedroom 2	2.6 x 3.8m	8'6" x 12'6"
TIA	62.6m <sup>2</sup>	673.8ft <sup>2</sup>

## Apartment 11

Kitchen/Living/Dining	5.9 x 7.1m	19'4" x 23'4"
Bedroom 1	2.9 x 3.5m	9'6" x 11'6"
Bedroom 2	3.8 x 3.0m	12'6" x 9'10"
TIA	65.2m <sup>2</sup>	701.5ft <sup>2</sup>

## Apartment 06

Kitchen/Living/Dining	3.1 x 7.9m	10'2" x 25'11"
Bedroom 1	2.8 x 5.9m	9'2" x 19'4"
TIA	47.3m <sup>2</sup>	509.3ft <sup>2</sup>

## Apartment 08

Kitchen/Living/Dining	3.4 x 9.5m	11'2" x 31'2"
Bedroom 1	2.9 x 4.9m	9'6" x 16'1"
Bedroom 2	2.9 x 3.8m	9'6" x 12'6"
TIA	73.6m <sup>2</sup>	791.9ft <sup>2</sup>

## Apartment 10

Kitchen/Living/Dining	3.4 x 7.4m	11'2" x 24'3"
Bedroom 1	2.8 x 3.1m	9'2" x 10'2"
Bedroom 2	2.6 x 3.8m	8'6" x 12'6"
TIA	62.5m <sup>2</sup>	672.9ft <sup>2</sup>

## Apartment 12

Kitchen/Living/Dining	3.6 x 7.9m	11'10" x 25'11"
Bedroom 1	3.8 x 4.0m	12'6" x 13'2"
Bedroom 2	2.6 x 4.6m	8'6" x 15'1"
Bedroom 3	3.4 x 2.8m	11'2" x 9'2"
TIA	77.8m <sup>2</sup>	836.8ft <sup>2</sup>



Please note, floorplans and dimensions are taken from architectural drawings and are for guidance only. Dimensions stated are within a tolerance of plus or minus 150mm. Overall dimensions are usually stated and there may be projections into these. Kitchen and bathroom layouts are indicative only.



# FLOOR 02

KEY

01 Bed 02 Bed



## Apartment 13

Kitchen/Living/Dining	3.0 x 7.9m	9'10" x 25'11"
Bedroom 1	2.8 x 5.9m	9'2" x 19'4"
TIA	46.5m <sup>2</sup>	500.7ft <sup>2</sup>

## Apartment 15

Kitchen/Living/Dining	6.3 x 5.3m	20'8" x 17'5"
Bedroom 1	2.7 x 3.9m	8'10" x 12'10"
Bedroom 2	2.7 x 3.9m	8'10" x 12'10"
TIA	70.8m <sup>2</sup>	762.4ft <sup>2</sup>

## Apartment 17

Kitchen/Living/Dining	3.0 x 9.5m	9'10" x 31'2"
Bedroom 1	2.9 x 5.8m	9'6" x 19'0"
TIA	51.6m <sup>2</sup>	555.1ft <sup>2</sup>

## Apartment 19

Kitchen/Living/Dining	2.8 x 7.9m	9'2" x 25'11"
Bedroom 1	2.8 x 5.6m	9'2" x 18'5"
TIA	45.3m <sup>2</sup>	487.1ft <sup>2</sup>

## Apartment 21

Kitchen/Living/Dining	6.6 x 5.6m	21'8" x 18'5"
Bedroom 1	2.6 x 3.5m	8'6" x 11'6"
Bedroom 2	2.5 x 3.5m	8'2" x 11'6"
TIA	60.2m <sup>2</sup>	647.6ft <sup>2</sup>

## Apartment 23

Kitchen/Living/Dining	3.1 x 7.9m	10'2" x 25'11"
Bedroom 1	2.7 x 5.9m	8'10" x 19'4"
TIA	45.6m <sup>2</sup>	490.6ft <sup>2</sup>

## Apartment 14

Kitchen/Living/Dining	3.1 x 7.9m	10'2" x 25'11"
Bedroom 1	2.8 x 5.9m	9'2" x 19'4"
TIA	47.3m <sup>2</sup>	509.3ft <sup>2</sup>

## Apartment 16

Kitchen/Living/Dining	3.9 x 9.4m	12'10" x 30'10"
Bedroom 1	2.8 x 4.6m	9'2" x 15'1"
TIA	56.1m <sup>2</sup>	604.3ft <sup>2</sup>

## Apartment 18

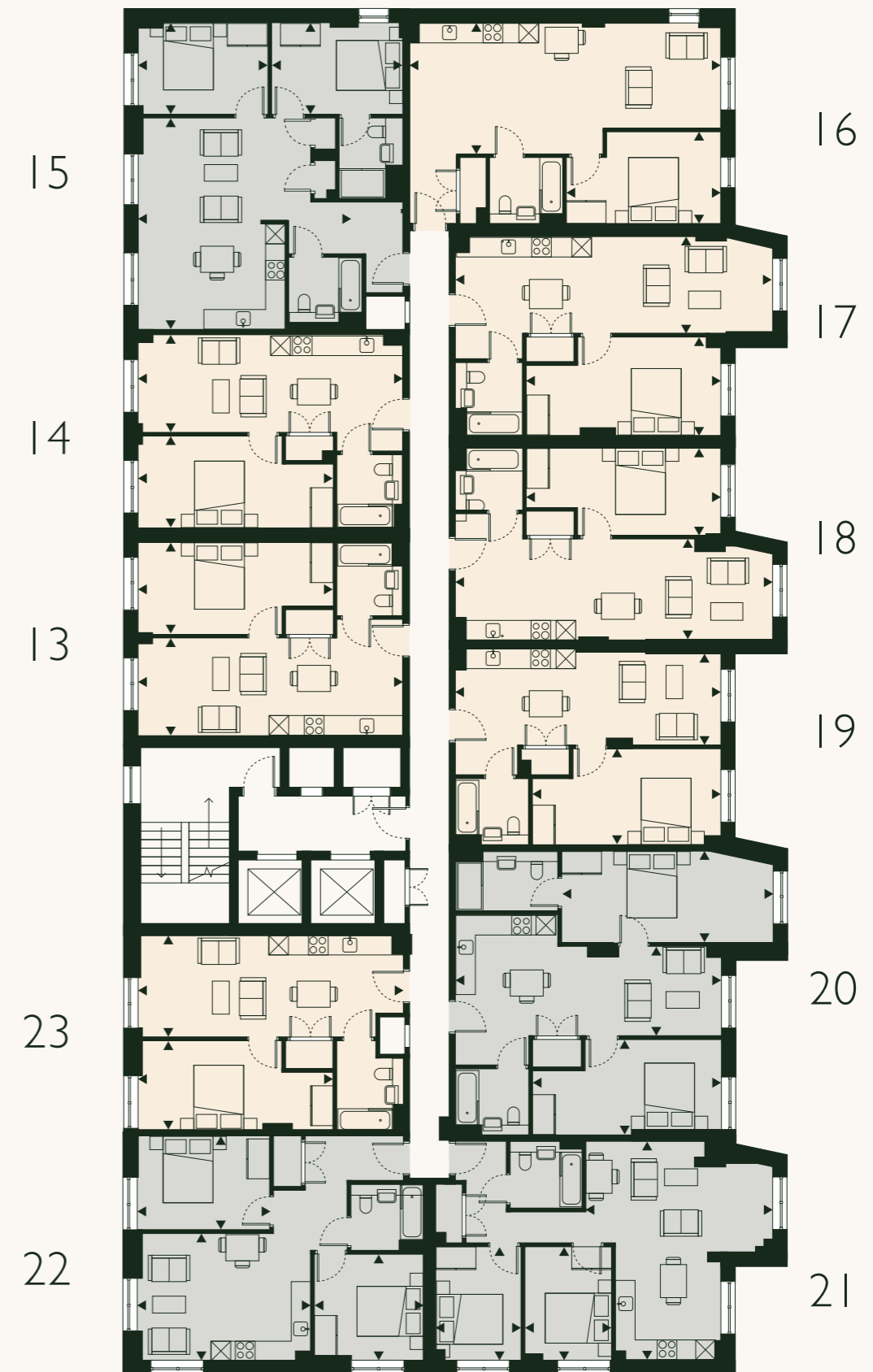
Kitchen/Living/Dining	3.0 x 9.5m	9'10" x 31'2"
Bedroom 1	2.9 x 5.8m	9'6" x 19'0"
TIA	51.6m <sup>2</sup>	555.1ft <sup>2</sup>

## Apartment 20

Kitchen/Living/Dining	2.6 x 7.9m	8'6" x 25'11"
Bedroom 1	2.9 x 6.4m	9'6" x 21'0"
Bedroom 2	2.8 x 5.6m	9'2" x 18'5"
TIA	71.4m <sup>2</sup>	768.8ft <sup>2</sup>

## Apartment 22

Kitchen/Living/Dining	3.9 x 5.3m	12'10" x 17'5"
Bedroom 1	2.8 x 4.0m	9'2" x 13'2"
Bedroom 2	3.2 x 3.3m	10'6" x 10'10"
TIA	57.1m <sup>2</sup>	614.5ft <sup>2</sup>



Please note, floorplans and dimensions are taken from architectural drawings and are for guidance only. Dimensions stated are within a tolerance of plus or minus 150mm. Overall dimensions are usually stated and there may be projections into these. Kitchen and bathroom layouts are indicative only.



# FLOOR 03 KEY

01 Bed 02 Bed



## Apartment 24

Kitchen/Living/Dining	3.0 x 7.9m	9'10" x 25'11"
Bedroom 1	2.8 x 5.9m	9'2" x 19'4"
TIA	46.5m <sup>2</sup>	500.7ft <sup>2</sup>

## Apartment 26

Kitchen/Living/Dining	6.3 x 5.3m	20'8" x 17'5"
Bedroom 1	2.7 x 3.9m	8'10" x 12'10"
Bedroom 2	2.7 x 3.9m	8'10" x 12'10"
TIA	70.8m <sup>2</sup>	762.4ft <sup>2</sup>

## Apartment 28

Kitchen/Living/Dining	3.0 x 7.9m	9'10" x 25'11"
Bedroom 1	2.9 x 5.8m	9'6" x 19'0"
TIA	47.3m <sup>2</sup>	508.7ft <sup>2</sup>
Balcony	2.0m <sup>2</sup>	21.5ft <sup>2</sup>

## Apartment 30

Kitchen/Living/Dining	2.8 x 7.9m	9'2" x 25'11"
Bedroom 1	2.8 x 5.6m	9'2" x 18'5"
TIA	45.3m <sup>2</sup>	487.1ft <sup>2</sup>

## Apartment 32

Kitchen/Living/Dining	6.6 x 3.2m	21'8" x 10'6"
Bedroom 1	3.5 x 2.6m	11'6" x 8'6"
Bedroom 2	3.5 x 2.5m	11'6" x 8'2"
TIA	55.9m <sup>2</sup>	601.3ft <sup>2</sup>
Balcony	2.0m <sup>2</sup>	21.5ft <sup>2</sup>

## Apartment 34

Kitchen/Living/Dining	3.1 x 7.9m	10'2" x 25'11"
Bedroom 1	2.7 x 5.9m	8'10" x 19'4"
TIA	45.5m <sup>2</sup>	490.1ft <sup>2</sup>

## Apartment 25

Kitchen/Living/Dining	3.1 x 7.9m	10'2" x 25'11"
Bedroom 1	2.8 x 5.9m	9'2" x 19'4"
TIA	47.3m <sup>2</sup>	509.3ft <sup>2</sup>

## Apartment 27

Kitchen/Living/Dining	3.1 x 9.4m	10'2" x 30'10"
Bedroom 1	2.8 x 4.6m	9'2" x 15'1"
TIA	56.1m <sup>2</sup>	604.3ft <sup>2</sup>

## Apartment 29

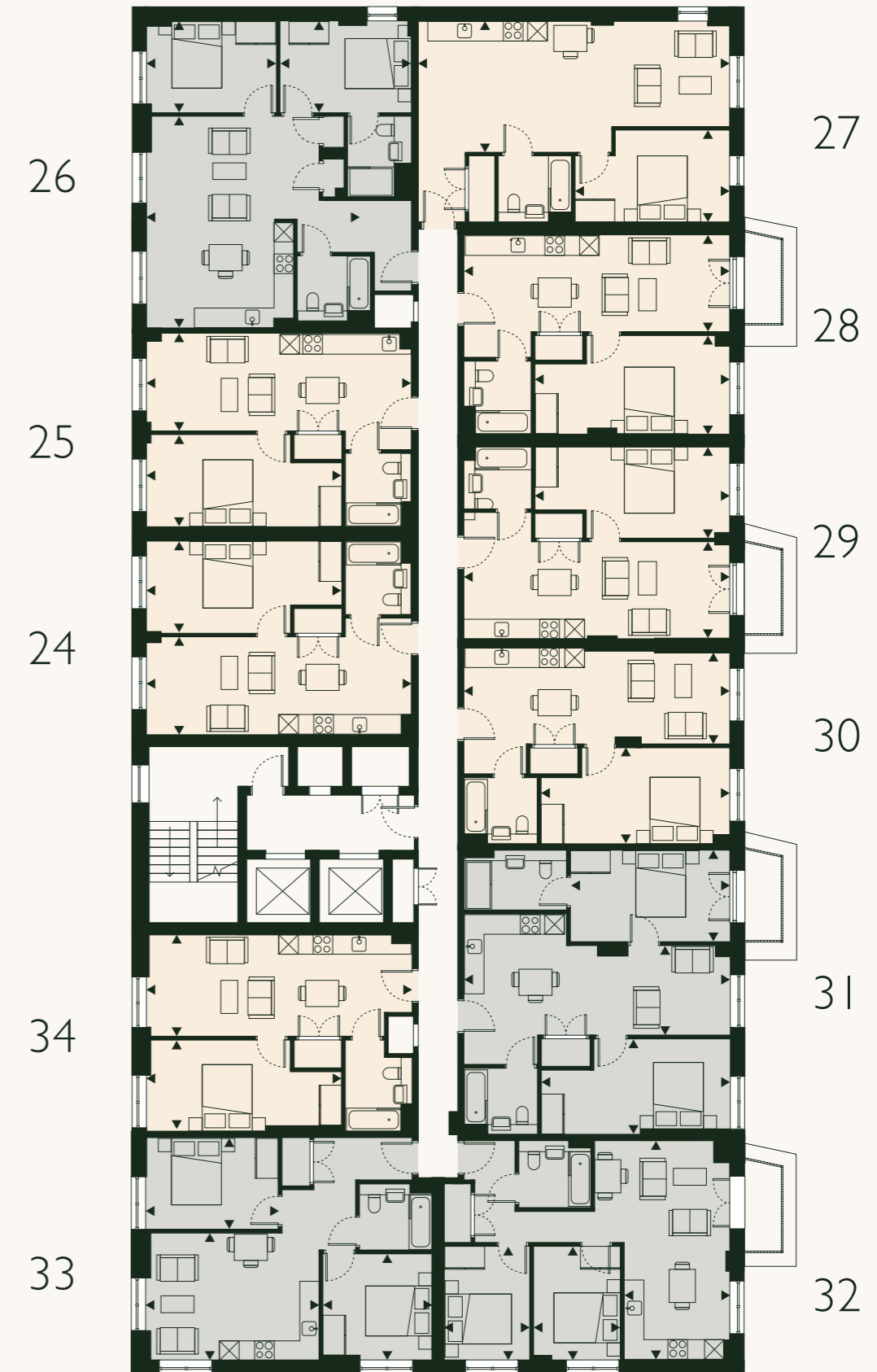
Kitchen/Living/Dining	3.0 x 7.9m	9'10" x 25'11"
Bedroom 1	2.9 x 5.8m	9'6" x 19'0"
TIA	47.3m <sup>2</sup>	508.7ft <sup>2</sup>
Balcony	2.0m <sup>2</sup>	21.5ft <sup>2</sup>

## Apartment 31

Kitchen/Living/Dining	2.6 x 7.9m	8'6" x 25'11"
Bedroom 1	2.9 x 4.8m	9'6" x 15'9"
Bedroom 2	2.8 x 5.6m	9'2" x 18'5"
TIA	67.1m <sup>2</sup>	722.5ft <sup>2</sup>
Balcony	2.0m <sup>2</sup>	21.5ft <sup>2</sup>

## Apartment 33

Kitchen/Living/Dining	3.9 x 5.3m	12'10" x 17'5"
Bedroom 1	2.8 x 4.0m	9'2" x 13'2"
Bedroom 2	3.0 x 3.2m	9'10" x 10'6"
TIA	57.1m <sup>2</sup>	614.5ft <sup>2</sup>



Please note, floorplans and dimensions are taken from architectural drawings and are for guidance only. Dimensions stated are within a tolerance of plus or minus 150mm. Overall dimensions are usually stated and there may be projections into these. Kitchen and bathroom layouts are indicative only.



Apartment 35			
Kitchen/Living/Dining	3.5 x 6.7m	11'6" x 22'0"	
Bedroom 1	2.9 x 5.9m	9'6" x 19'4"	
TIA	42.6m <sup>2</sup>	458.1ft <sup>2</sup>	
Balcony	2.0m <sup>2</sup>	21.5ft <sup>2</sup>	

Apartment 37			
Kitchen/Living/Dining	6.3 x 4.5m	20'8" x 14'9"	
Bedroom 1	2.7 x 3.9m	8'10" x 12'10"	
Bedroom 2	2.7 x 5.9m	8'10" x 19'4"	
TIA	66.7m <sup>2</sup>	717.5ft <sup>2</sup>	
Balcony	2.0m <sup>2</sup>	21.5ft <sup>2</sup>	

Apartment 39			
Kitchen/Living/Dining	3.0 x 7.9m	9'10" x 25'11"	
Bedroom 1	2.9 x 5.8m	9'6" x 19'0"	
TIA	47.8m <sup>2</sup>	514.0ft <sup>2</sup>	

Apartment 41			
Kitchen/Living/Dining	2.8 x 7.9m	9'2" x 25'11"	
Bedroom 1	3.0 x 3.5m	9'10" x 11'6"	
TIA	39.7m <sup>2</sup>	427.2ft <sup>2</sup>	
Balcony	4.0m <sup>2</sup>	43.1ft <sup>2</sup>	

Apartment 43			
Kitchen/Living/Dining	6.1 x 4.1m	20'0" x 13'5"	
Bedroom 1	3.5 x 2.6m	11'6" x 8'6"	
Bedroom 2	3.5 x 2.6m	11'6" x 8'6"	
TIA	54.7m <sup>2</sup>	588.8ft <sup>2</sup>	

Apartment 45			
Kitchen/Living/Dining	3.1 x 6.7m	10'2" x 22'0"	
Bedroom 1	2.7 x 5.9m	8'10" x 19'4"	
TIA	40.9m <sup>2</sup>	440.5ft <sup>2</sup>	
Balcony	2.0m <sup>2</sup>	21.5ft <sup>2</sup>	

Apartment 36			
Kitchen/Living/Dining	3.1 x 7.9m	10'2" x 25'11"	
Bedroom 1	2.8 x 5.9m	9'2" x 19'4"	
TIA	47.3m <sup>2</sup>	509.3ft <sup>2</sup>	

Apartment 38			
Kitchen/Living/Dining	3.1 x 9.4m	10'2" x 30'10"	
Bedroom 1	2.8 x 4.6m	9'2" x 15'1"	
TIA	56.1m <sup>2</sup>	604.3ft <sup>2</sup>	

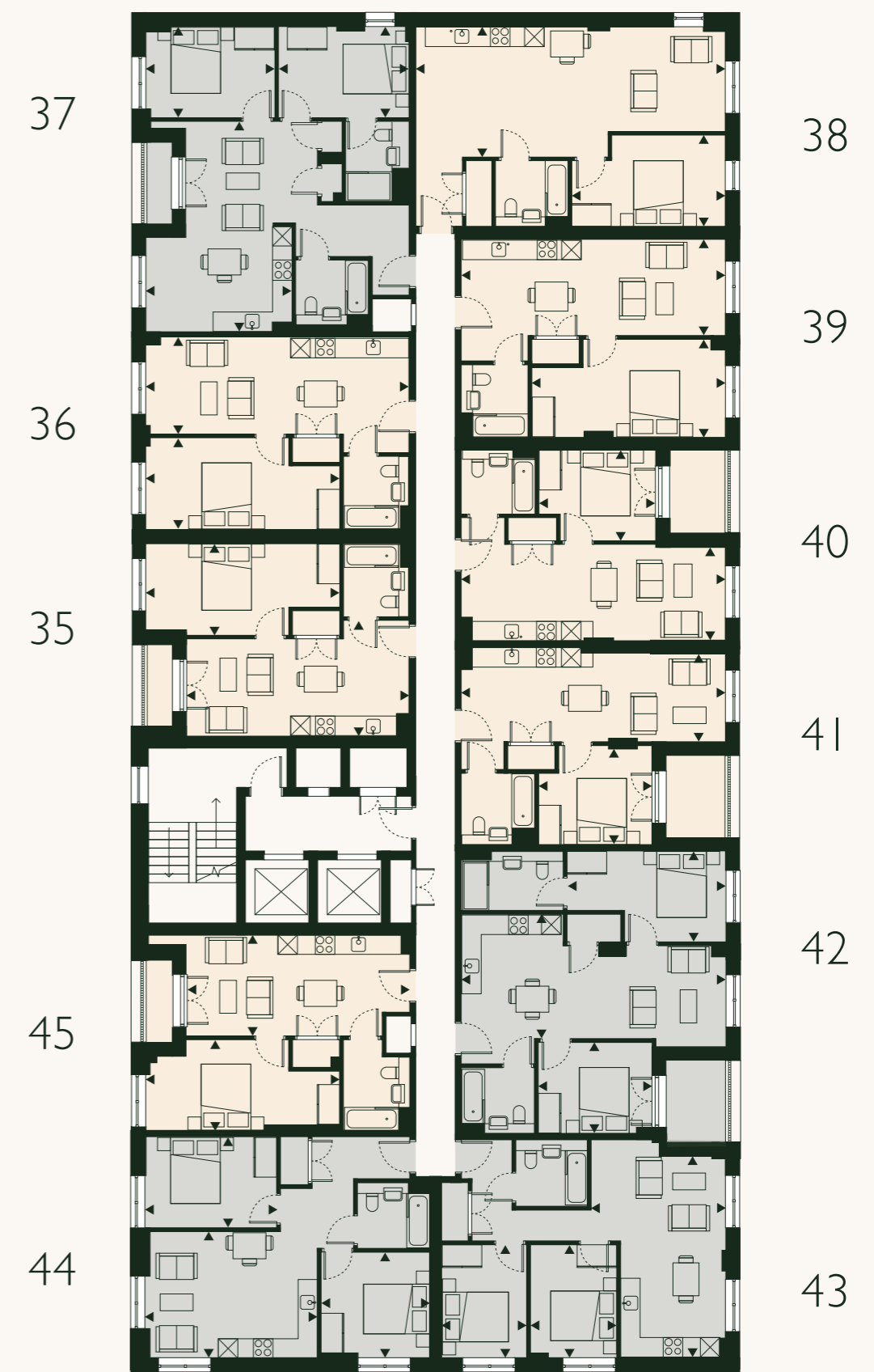
Apartment 40			
Kitchen/Living/Dining	2.8 x 7.9m	9'2" x 25'11"	
Bedroom 1	3.0 x 3.5m	9'10" x 11'6"	
TIA	39.7m <sup>2</sup>	427.2ft <sup>2</sup>	
Balcony	4.0m <sup>2</sup>	43.1ft <sup>2</sup>	

Apartment 42			
Kitchen/Living/Dining	3.8 x 7.9m	12'6" x 25'11"	
Bedroom 1	2.7 x 4.8m	8'10" x 15'9"	
Bedroom 2	2.7 x 3.5m	8'10" x 11'6"	
TIA	61.0m <sup>2</sup>	656.1ft <sup>2</sup>	
Balcony	4.0m <sup>2</sup>	43.1ft <sup>2</sup>	

Apartment 44			
Kitchen/Living/Dining	3.9 x 5.3m	12'10" x 17'5"	
Bedroom 1	2.8 x 4.0m	9'2" x 13'2"	
Bedroom 2	3.3 x 3.3m	10'10" x 10'10"	
TIA	57.1m <sup>2</sup>	614.5ft <sup>2</sup>	

# FLOOR 04 KEY

01 Bed 02 Bed



Please note, floorplans and dimensions are taken from architectural drawings and are for guidance only. Dimensions stated are within a tolerance of plus or minus 150mm. Overall dimensions are usually stated and there may be projections into these. Kitchen and bathroom layouts are indicative only.



Apartment 46			
Kitchen/Living/Dining	3.5 x 6.7m	11'6" x 22'0"	
Bedroom 1	2.9 x 5.9m	9'6" x 19'4"	
TIA	42.6m <sup>2</sup>	458.1ft <sup>2</sup>	
Balcony	2.0m <sup>2</sup>	21.5ft <sup>2</sup>	

Apartment 48			
Kitchen/Living/Dining	6.3 x 4.5m	20'8" x 14'9"	
Bedroom 1	2.7 x 3.9m	8'10" x 12'10"	
Bedroom 2	2.7 x 5.9m	8'10" x 19'4"	
TIA	66.7m <sup>2</sup>	717.5ft <sup>2</sup>	
Balcony	2.0m <sup>2</sup>	21.5ft <sup>2</sup>	

Apartment 50			
Kitchen/Living/Dining	3.0 x 7.9m	9'10" x 25'11"	
Bedroom 1	2.9 x 5.8m	9'6" x 19'0"	
TIA	47.8m <sup>2</sup>	514.0ft <sup>2</sup>	

Apartment 52			
Kitchen/Living/Dining	2.8 x 7.9m	9'2" x 25'11"	
Bedroom 1	3.0 x 3.5m	9'10" x 11'6"	
TIA	39.7m <sup>2</sup>	427.2ft <sup>2</sup>	
Balcony	4.0m <sup>2</sup>	43.1ft <sup>2</sup>	

Apartment 54			
Kitchen/Living/Dining	6.1 x 4.1m	20'0" x 13'5"	
Bedroom 1	3.5 x 2.6m	11'6" x 8'6"	
Bedroom 2	3.5 x 2.6m	11'6" x 8'6"	
TIA	54.7m <sup>2</sup>	588.8ft <sup>2</sup>	

Apartment 56			
Kitchen/Living/Dining	3.1 x 6.7m	10'2" x 22'0"	
Bedroom 1	2.7 x 5.9m	8'10" x 19'4"	
TIA	40.9m <sup>2</sup>	440.5ft <sup>2</sup>	
Balcony	2.0m <sup>2</sup>	21.5ft <sup>2</sup>	

Apartment 47			
Kitchen/Living/Dining	3.1 x 7.9m	10'2" x 25'11"	
Bedroom 1	2.8 x 5.9m	9'2" x 19'4"	
TIA	47.3m <sup>2</sup>	509.3ft <sup>2</sup>	

Apartment 49			
Kitchen/Living/Dining	3.1 x 9.4m	10'2" x 30'10"	
Bedroom 1	2.8 x 4.6m	9'2" x 15'1"	
TIA	56.1m <sup>2</sup>	604.3ft <sup>2</sup>	

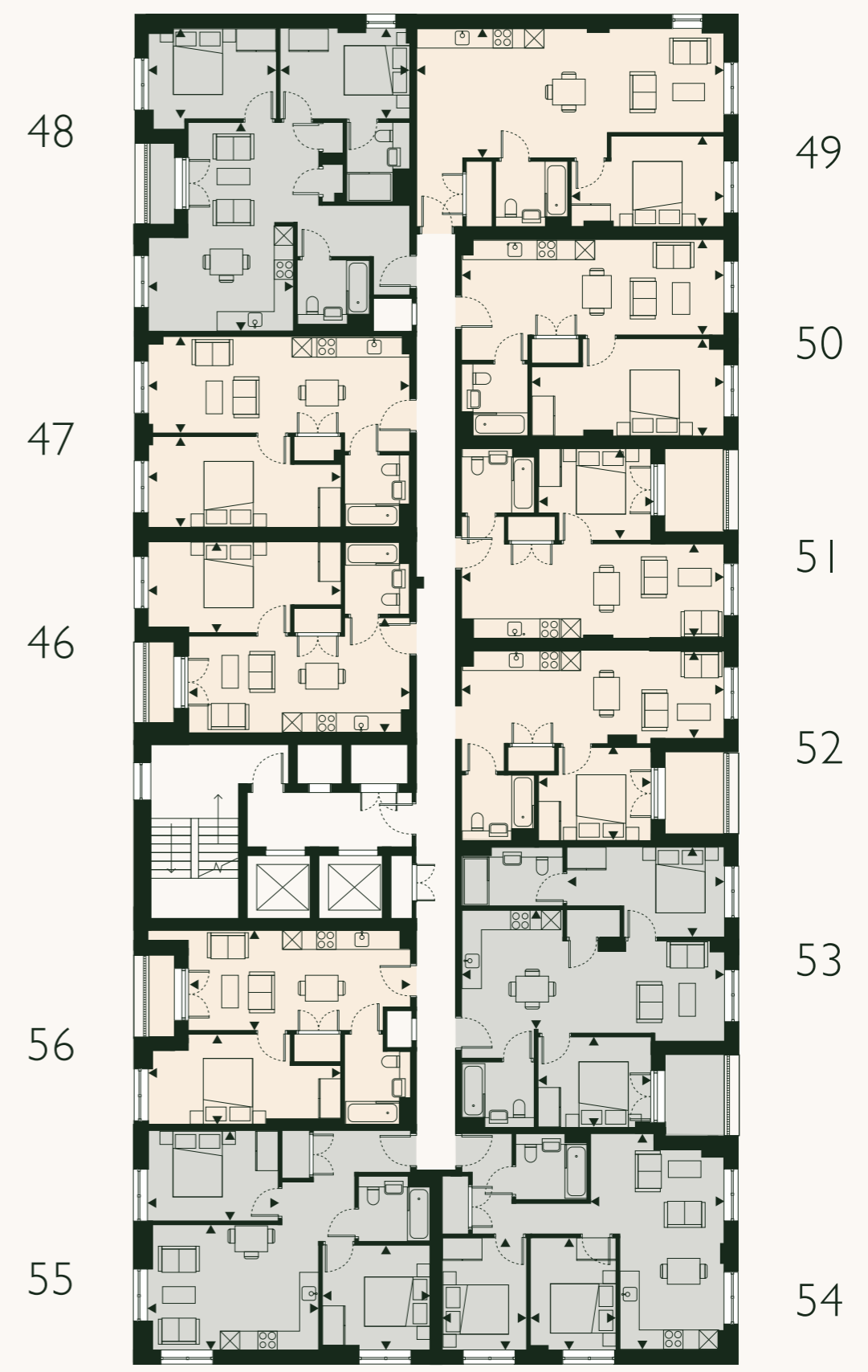
Apartment 51			
Kitchen/Living/Dining	2.8 x 7.9m	9'2" x 25'11"	
Bedroom 1	3.0 x 3.5m	9'10" x 11'6"	
TIA	39.7m <sup>2</sup>	427.2ft <sup>2</sup>	
Balcony	4.0m <sup>2</sup>	43.1ft <sup>2</sup>	

Apartment 53			
Kitchen/Living/Dining	3.8 x 7.9m	12'6" x 25'11"	
Bedroom 1	2.7 x 4.8m	8'10" x 15'9"	
Bedroom 2	2.7 x 3.5m	8'10" x 11'6"	
TIA	61.0m <sup>2</sup>	656.1ft <sup>2</sup>	
Balcony	4.0m <sup>2</sup>	43.1ft <sup>2</sup>	

Apartment 55			
Kitchen/Living/Dining	3.9 x 5.3m	12'10" x 17'5"	
Bedroom 1	2.8 x 4.0m	9'2" x 13'2"	
Bedroom 2	3.3 x 3.3m	10'10" x 10'10"	
TIA	57.1m <sup>2</sup>	614.5ft <sup>2</sup>	

# FLOOR 05 KEY

01 Bed 02 Bed



Please note, floorplans and dimensions are taken from architectural drawings and are for guidance only. Dimensions stated are within a tolerance of plus or minus 150mm. Overall dimensions are usually stated and there may be projections into these. Kitchen and bathroom layouts are indicative only.



### Apartment 57

Kitchen/Living/Dining	3.0 x 6.7m	9'10" x 22'0"
Bedroom 1	2.9 x 5.9m	9'6" x 19'4"
TIA	43.6m <sup>2</sup>	469.11ft <sup>2</sup>
Balcony	2.0m <sup>2</sup>	21.5ft <sup>2</sup>

### Apartment 59

Kitchen/Living/Dining	6.3 x 5.3m	20'8" x 17'5"
Bedroom 1	2.7 x 3.9m	8'10" x 12'10"
Bedroom 2	2.7 x 3.9m	8'10" x 12'10"
TIA	67.1m <sup>2</sup>	722.4ft <sup>2</sup>
Balcony	2.0m <sup>2</sup>	21.5ft <sup>2</sup>

### Apartment 61

Kitchen/Living/Dining	2.8 x 7.9m	9'2" x 25'11"
Bedroom 1	3.1 x 3.7m	10'2" x 12'2"
TIA	40.7m <sup>2</sup>	438.0ft <sup>2</sup>
Balcony	2.0m <sup>2</sup>	21.5ft <sup>2</sup>

### Apartment 63

Kitchen/Living/Dining	2.9 x 7.9m	9'6" x 25'11"
Bedroom 1	2.9 x 5.6m	9'6" x 18'5"
TIA	45.5m <sup>2</sup>	489.5ft <sup>2</sup>

### Apartment 65

Kitchen/Living/Dining	6.6 x 4.1m	21'8" x 13'5"
Bedroom 1	3.5 x 2.6m	11'6" x 8'6"
Bedroom 2	3.5 x 2.6m	11'6" x 8'6"
TIA	55.9m <sup>2</sup>	601.3ft <sup>2</sup>

### Apartment 67

Kitchen/Living/Dining	3.1 x 7.9m	10'2" x 25'11"
Bedroom 1	2.7 x 5.9m	8'10" x 19'4"
TIA	45.5m <sup>2</sup>	490.1ft <sup>2</sup>

### Apartment 58

Kitchen/Living/Dining	3.0 x 7.9m	9'10" x 25'11"
Bedroom 1	2.8 x 5.9m	9'2" x 19'4"
TIA	46.3m <sup>2</sup>	498.0ft <sup>2</sup>

### Apartment 60

Kitchen/Living/Dining	4.3 x 9.4m	14'1" x 30'10"
Bedroom 1	3.1 x 4.6m	10'2" x 15'1"
TIA	56.6m <sup>2</sup>	608.7ft <sup>2</sup>

### Apartment 62

Kitchen/Living/Dining	2.9 x 7.9m	9'6" x 25'11"
Bedroom 1	2.8 x 3.5m	9'2" x 11'6"
TIA	40.2m <sup>2</sup>	432.5ft <sup>2</sup>
Balcony	4.0m <sup>2</sup>	43.1ft <sup>2</sup>

### Apartment 64

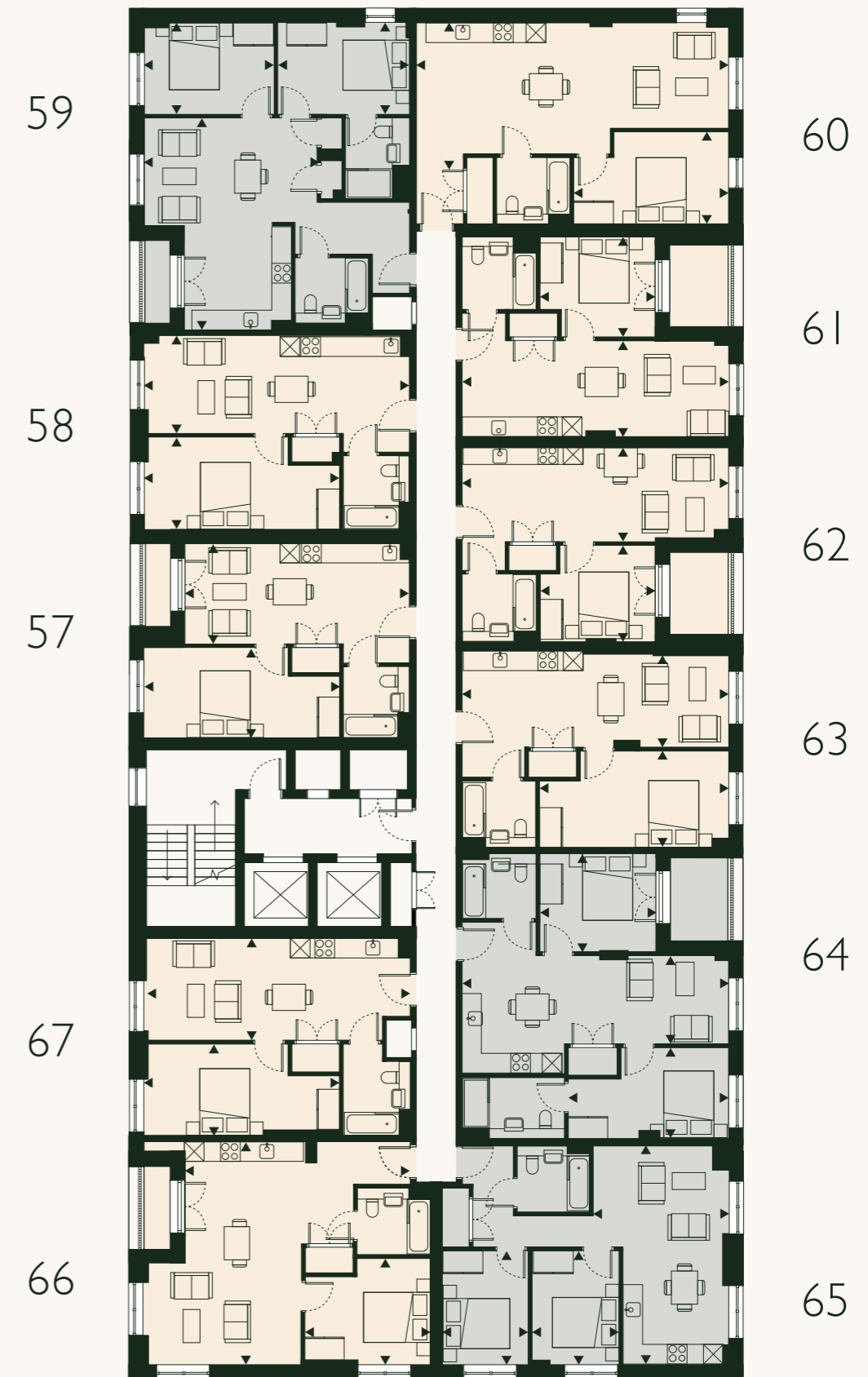
Kitchen/Living/Dining	2.6 x 7.9m	8'6" x 25'11"
Bedroom 1	2.7 x 4.8m	8'10" x 15'9"
Bedroom 2	3.0 x 3.7m	9'10" x 12'2"
TIA	60.4m <sup>2</sup>	650.6ft <sup>2</sup>
Balcony	4.0m <sup>2</sup>	43.1ft <sup>2</sup>

### Apartment 66

Kitchen/Living/Dining	6.7 x 6.7m	22'0" x 22'0"
Bedroom 1	3.2 x 3.8m	10'6" x 12'6"
TIA	52.5m <sup>2</sup>	565.4ft <sup>2</sup>
Balcony	2.0m <sup>2</sup>	21.5ft <sup>2</sup>

# FLOOR 06 KEY

01 Bed 02 Bed



Please note, floorplans and dimensions are taken from architectural drawings and are for guidance only. Dimensions stated are within a tolerance of plus or minus 150mm. Overall dimensions are usually stated and there may be projections into these. Kitchen and bathroom layouts are indicative only.



### Apartment 68

Kitchen/Living/Dining	3.0 x 6.7m	9'10" x 22'0"
Bedroom 1	2.9 x 5.9m	9'6" x 19'4"
TIA	43.6m <sup>2</sup>	469.11ft <sup>2</sup>
Balcony	2.0m <sup>2</sup>	21.5ft <sup>2</sup>

### Apartment 70

Kitchen/Living/Dining	6.3 x 5.3m	20'8" x 17'5"
Bedroom 1	2.7 x 3.9m	8'10" x 12'10"
Bedroom 2	2.7 x 3.9m	8'10" x 12'10"
TIA	67.1m <sup>2</sup>	722.4ft <sup>2</sup>
Balcony	2.0m <sup>2</sup>	21.5ft <sup>2</sup>

### Apartment 72

Kitchen/Living/Dining	2.8 x 7.9m	9'2" x 25'11"
Bedroom 1	3.1 x 3.7m	10'2" x 12'2"
TIA	40.7m <sup>2</sup>	438.0ft <sup>2</sup>
Balcony	4.0m <sup>2</sup>	43.1ft <sup>2</sup>

### Apartment 74

Kitchen/Living/Dining	2.9 x 7.9m	9'6" x 25'11"
Bedroom 1	2.9 x 5.6m	9'6" x 18'5"
TIA	45.5m <sup>2</sup>	489.5ft <sup>2</sup>

### Apartment 76

Kitchen/Living/Dining	6.6 x 4.1m	21'8" x 13'5"
Bedroom 1	3.5 x 2.6m	11'6" x 8'6"
Bedroom 2	3.5 x 2.6m	11'6" x 8'6"
TIA	55.9m <sup>2</sup>	601.3ft <sup>2</sup>

### Apartment 78

Kitchen/Living/Dining	3.1 x 7.9m	10'2" x 25'11"
Bedroom 1	2.7 x 5.9m	8'10" x 19'4"
TIA	45.5m <sup>2</sup>	490.1ft <sup>2</sup>

### Apartment 69

Kitchen/Living/Dining	3.0 x 7.9m	9'10" x 25'11"
Bedroom 1	2.8 x 5.9m	9'2" x 19'4"
TIA	46.3m <sup>2</sup>	498.0ft <sup>2</sup>

### Apartment 71

Kitchen/Living/Dining	4.3 x 9.4m	14'1" x 30'10"
Bedroom 1	3.1 x 4.6m	10'2" x 15'1"
TIA	56.6m <sup>2</sup>	608.7ft <sup>2</sup>

### Apartment 73

Kitchen/Living/Dining	2.9 x 7.9m	9'6" x 25'11"
Bedroom 1	2.8 x 3.5m	9'2" x 11'6"
TIA	40.2m <sup>2</sup>	432.5ft <sup>2</sup>
Balcony	4.0m <sup>2</sup>	43.1ft <sup>2</sup>

### Apartment 75

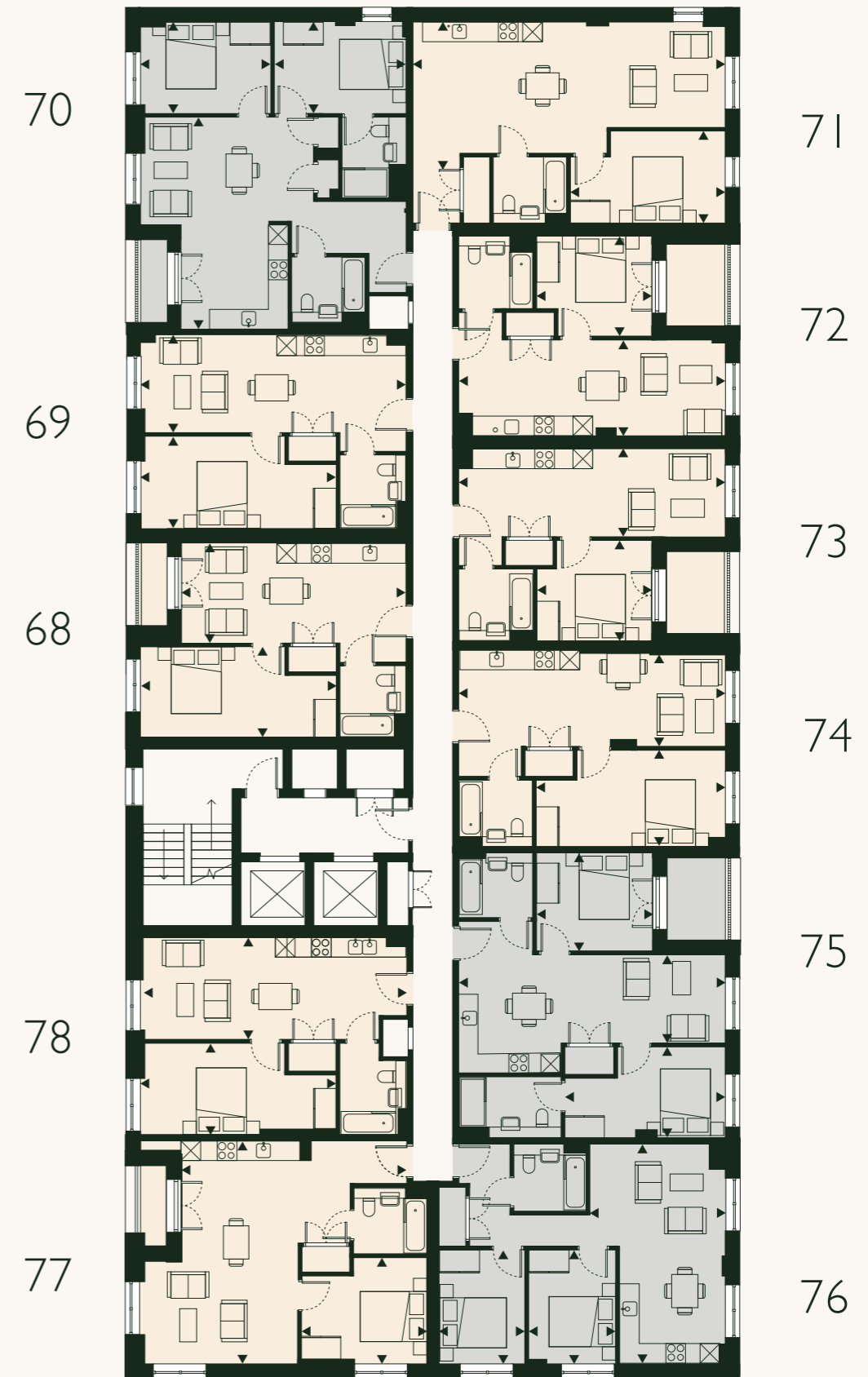
Kitchen/Living/Dining	2.6 x 7.9m	8'6" x 25'11"
Bedroom 1	2.7 x 4.8m	8'10" x 15'9"
Bedroom 2	3.0 x 3.7m	9'10" x 12'2"
TIA	60.4m <sup>2</sup>	650.6ft <sup>2</sup>
Balcony	4.0m <sup>2</sup>	43.1ft <sup>2</sup>

### Apartment 77

Kitchen/Living/Dining	6.7 x 6.7m	22'0" x 22'0"
Bedroom 1	3.2 x 3.8m	10'6" x 12'6"
TIA	52.5m <sup>2</sup>	565.4ft <sup>2</sup>
Balcony	2.0m <sup>2</sup>	21.5ft <sup>2</sup>

# FLOOR 07 KEY

01 Bed 02 Bed



Please note, floorplans and dimensions are taken from architectural drawings and are for guidance only. Dimensions stated are within a tolerance of plus or minus 150mm. Overall dimensions are usually stated and there may be projections into these. Kitchen and bathroom layouts are indicative only.



Apartment 79			
Kitchen/Living/Dining	3.0 x 6.7m	9'10" x 22'0"	
Bedroom 1	2.9 x 5.9m	9'6" x 19'4"	
TIA	43.6m <sup>2</sup>	469.11ft <sup>2</sup>	
Balcony	2.0m <sup>2</sup>	21.5ft <sup>2</sup>	

Apartment 81			
Kitchen/Living/Dining	6.3 x 5.3m	20'8" x 17'5"	
Bedroom 1	2.7 x 3.9m	8'10" x 12'10"	
Bedroom 2	2.7 x 3.9m	8'10" x 12'10"	
TIA	67.1m <sup>2</sup>	722.4ft <sup>2</sup>	
Balcony	2.0m <sup>2</sup>	21.5ft <sup>2</sup>	

Apartment 83			
Kitchen/Living/Dining	2.8 x 7.9m	9'2" x 25'11"	
Bedroom 1	3.1 x 3.7m	10'2" x 12'2"	
TIA	40.7m <sup>2</sup>	438.0ft <sup>2</sup>	
Balcony	4.0m <sup>2</sup>	43.1ft <sup>2</sup>	

Apartment 85			
Kitchen/Living/Dining	2.9 x 7.9m	9'6" x 25'11"	
Bedroom 1	2.9 x 5.6m	9'6" x 18'5"	
TIA	45.5m <sup>2</sup>	489.5ft <sup>2</sup>	

Apartment 87			
Kitchen/Living/Dining	6.6 x 4.1m	21'8" x 13'5"	
Bedroom 1	3.5 x 2.6m	11'6" x 8'6"	
Bedroom 2	3.5 x 2.6m	11'6" x 8'6"	
TIA	55.9m <sup>2</sup>	601.3ft <sup>2</sup>	

Apartment 89			
Kitchen/Living/Dining	3.1 x 7.9m	10'2" x 25'11"	
Bedroom 1	2.7 x 5.9m	8'10" x 19'4"	
TIA	45.5m <sup>2</sup>	490.1ft <sup>2</sup>	

Apartment 80			
Kitchen/Living/Dining	3.0 x 7.9m	9'10" x 25'11"	
Bedroom 1	2.8 x 5.9m	9'2" x 19'4"	
TIA	46.3m <sup>2</sup>	498.0ft <sup>2</sup>	

Apartment 82			
Kitchen/Living/Dining	4.3 x 9.4m	14'1" x 30'10"	
Bedroom 1	3.1 x 4.6m	10'2" x 15'1"	
TIA	56.6m <sup>2</sup>	608.7ft <sup>2</sup>	

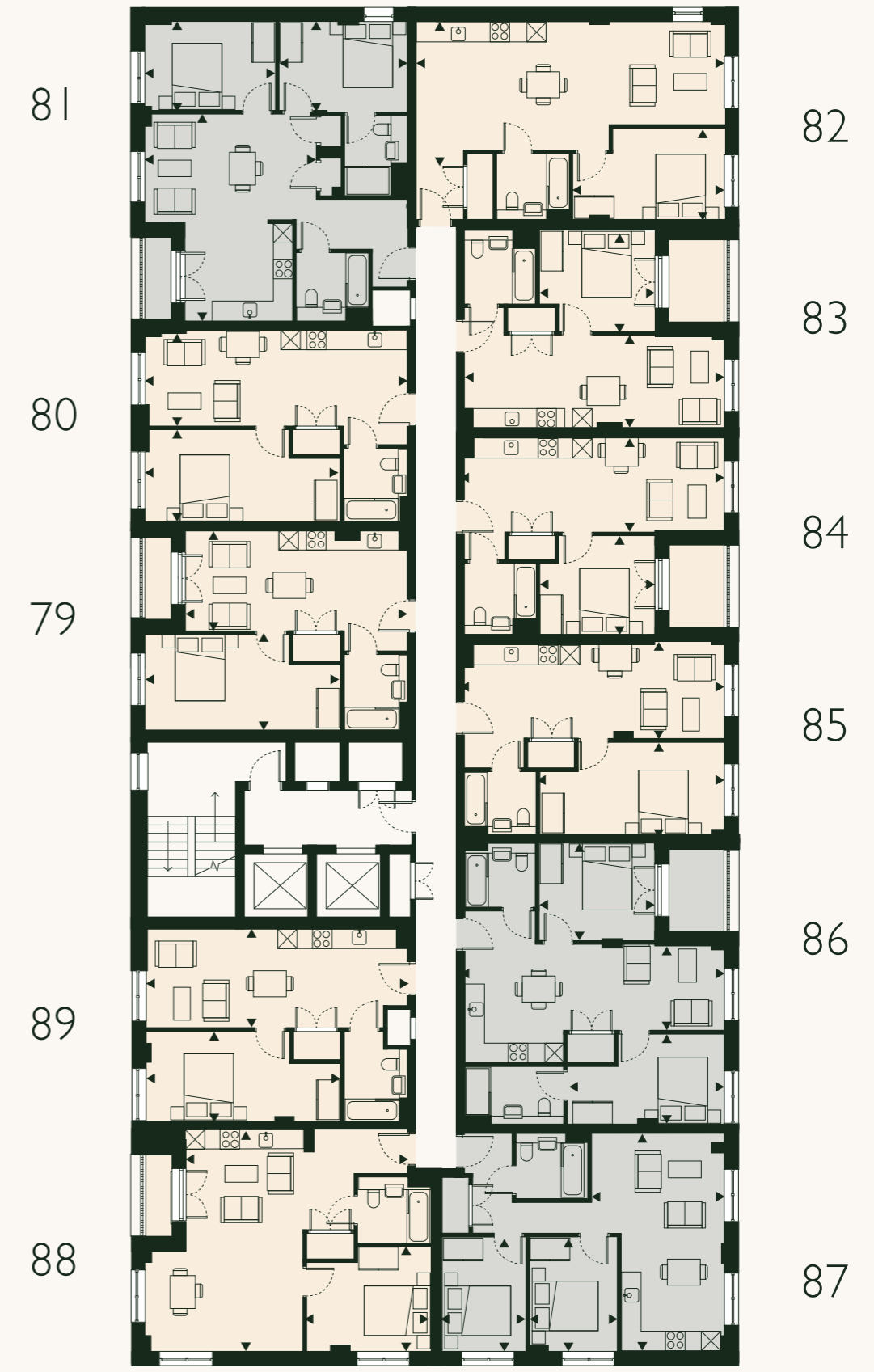
Apartment 84			
Kitchen/Living/Dining	2.9 x 7.9m	9'6" x 25'11"	
Bedroom 1	2.8 x 3.5m	9'2" x 11'6"	
TIA	40.2m <sup>2</sup>	432.5ft <sup>2</sup>	
Balcony	4.0m <sup>2</sup>	43.1ft <sup>2</sup>	

Apartment 86			
Kitchen/Living/Dining	2.6 x 7.9m	8'6" x 25'11"	
Bedroom 1	2.7 x 4.8m	8'10" x 15'9"	
Bedroom 2	3.0 x 3.7m	9'10" x 12'2"	
TIA	60.4m <sup>2</sup>	650.6ft <sup>2</sup>	
Balcony	4.0m <sup>2</sup>	43.1ft <sup>2</sup>	

Apartment 88			
Kitchen/Living/Dining	6.7 x 6.7m	22'0" x 22'0"	
Bedroom 1	3.2 x 3.8m	10'6" x 12'6"	
TIA	52.5m <sup>2</sup>	565.4ft <sup>2</sup>	
Balcony	2.0m <sup>2</sup>	21.5ft <sup>2</sup>	

# FLOOR 08 KEY

01 Bed 02 Bed



Please note, floorplans and dimensions are taken from architectural drawings and are for guidance only. Dimensions stated are within a tolerance of plus or minus 150mm. Overall dimensions are usually stated and there may be projections into these. Kitchen and bathroom layouts are indicative only.

# FLOOR 09 KEY

01 Bed 02 Bed 03 Bed



## Apartment 90

Kitchen/Living/Dining	3.0 x 6.7m	9'10" x 22'0"
Bedroom 1	2.8 x 5.8m	9'2" x 19'0"
TIA	43.6m <sup>2</sup>	469.4ft <sup>2</sup>
Balcony	2.0m <sup>2</sup>	21.5ft <sup>2</sup>

## Apartment 92

Kitchen/Living/Dining	5.6 x 5.1m	18'5" x 16'9"
Bedroom 1	4.3 x 2.7m	14'1" x 8'10"
Bedroom 2	3.2 x 3.2m	10'6" x 10'6"
TIA	63.5m <sup>2</sup>	683.4ft <sup>2</sup>
Balcony 1	2.0m <sup>2</sup>	21.5ft <sup>2</sup>
Balcony 2	2.0m <sup>2</sup>	21.5ft <sup>2</sup>

## Apartment 94

Kitchen/Living/Dining	3.1 x 7.8m	10'2" x 25'7"
Bedroom 1	2.6 x 4.8m	8'6" x 15'9"
Bedroom 2	2.9 x 3.5m	9'6" x 11'6"
TIA	61.4m <sup>2</sup>	660.8ft <sup>2</sup>
Balcony	6.0m <sup>2</sup>	64.6ft <sup>2</sup>

## Apartment 96

Kitchen/Living/Dining	3.0 x 7.8m	9'10" x 25'7"
Bedroom 1	3.1 x 3.3m	10'2" x 10'10"
Bedroom 2	2.9 x 3.6m	9'6" x 11'10"
Bedroom 3	2.7 x 6.4m	8'10" x 21'0"
TIA	86.4m <sup>2</sup>	929.8ft <sup>2</sup>
Balcony	6.0m <sup>2</sup>	64.6ft <sup>2</sup>

## Apartment 98

Kitchen/Living/Dining	3.0 x 7.9m	9'10" x 25'11"
Bedroom 1	2.7 x 5.8m	8'10" x 19'0"
TIA	43.6m <sup>2</sup>	469.4ft <sup>2</sup>

## Apartment 91

Kitchen/Living/Dining	2.9 x 7.9m	9'6" x 25'11"
Bedroom 1	2.7 x 5.9m	8'10" x 19'4"
TIA	46.0m <sup>2</sup>	494.9ft <sup>2</sup>

## Apartment 93

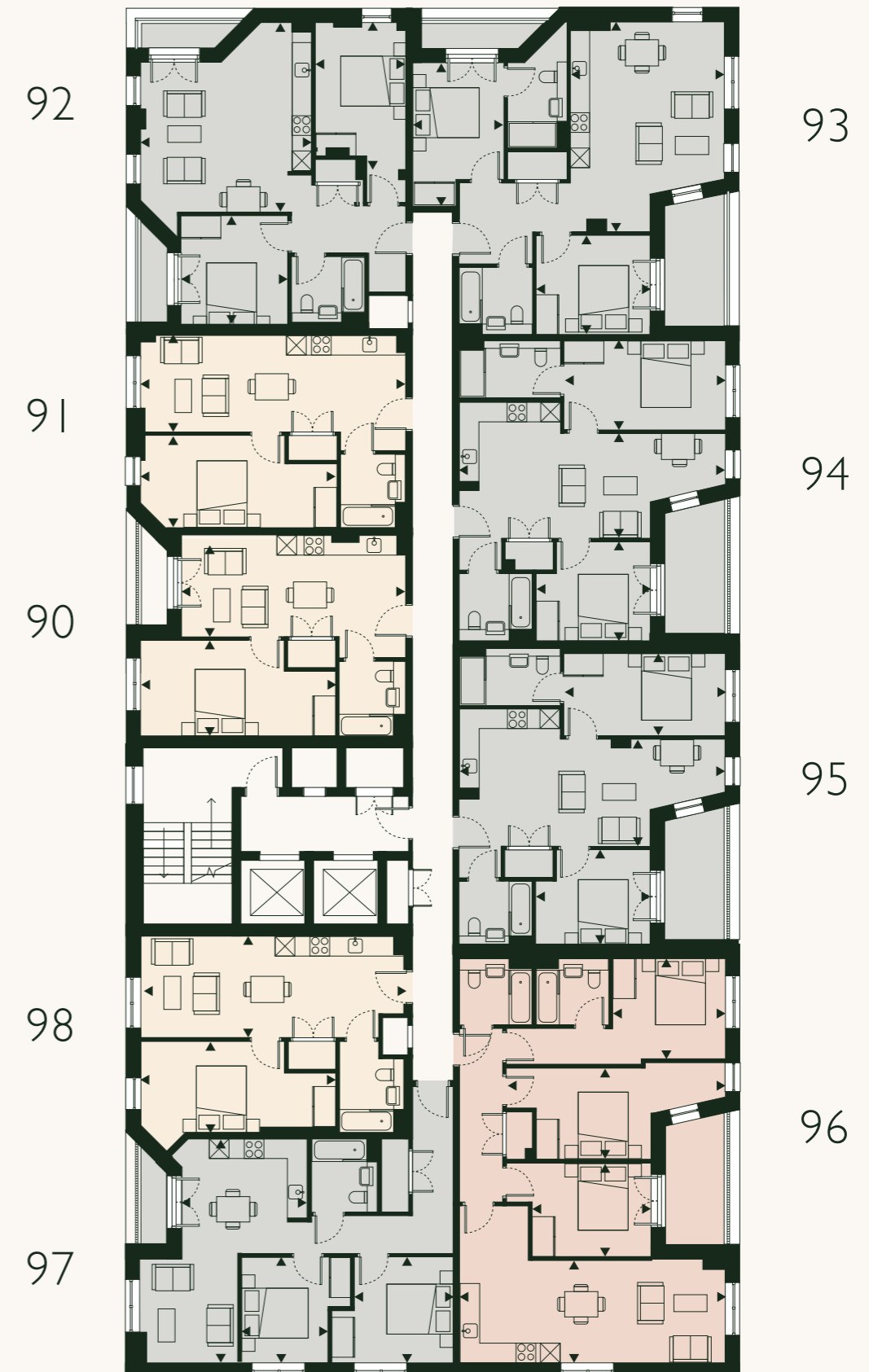
Kitchen/Living/Dining	6.2 x 4.5m	20'4" x 14'9"
Bedroom 1	4.1 x 2.7m	13'5" x 8'10"
Bedroom 2	2.9 x 3.4m	9'6" x 11'2"
TIA	66.9m <sup>2</sup>	720.2ft <sup>2</sup>
Balcony 1	6.0m <sup>2</sup>	64.6ft <sup>2</sup>
Balcony 2	3.0m <sup>2</sup>	32.3ft <sup>2</sup>

## Apartment 95

Kitchen/Living/Dining	3.1 x 7.8m	10'2" x 25'7"
Bedroom 1	2.6 x 4.7m	8'6" x 15'5"
Bedroom 2	2.9 x 3.5m	9'6" x 11'6"
TIA	61.2m <sup>2</sup>	658.3ft <sup>2</sup>
Balcony	6.0m <sup>2</sup>	64.6ft <sup>2</sup>

## Apartment 97

Kitchen/Living/Dining	6.7 x 3.8m	22'0" x 12'6"
Bedroom 1	3.1 x 2.9m	10'2" x 9'6"
Bedroom 2	3.2 x 2.4m	10'6" x 7'11"
TIA	60.7m <sup>2</sup>	652.8ft <sup>2</sup>
Balcony	2.0m <sup>2</sup>	21.5ft <sup>2</sup>



Please note, floorplans and dimensions are taken from architectural drawings and are for guidance only. Dimensions stated are within a tolerance of plus or minus 150mm. Overall dimensions are usually stated and there may be projections into these. Kitchen and bathroom layouts are indicative only.



# FLOOR 10

## KEY

01 Bed 02 Bed 03 Bed



### Apartment 99

Kitchen/Living/Dining	3.0 x 6.7m	9'10" x 22'0"
Bedroom 1	2.8 x 5.8m	9'2" x 19'0"
TIA	43.6m <sup>2</sup>	469.4ft <sup>2</sup>

### Apartment 101

Kitchen/Living/Dining	5.6 x 4.5m	18'5" x 14'9"
Bedroom 1	4.3 x 2.7m	14'1" x 8'10"
Bedroom 2	3.2 x 3.2m	10'6" x 10'6"
TIA	63.5m <sup>2</sup>	683.4ft <sup>2</sup>

### Apartment 103

Kitchen/Living/Dining	3.1 x 7.8m	10'2" x 25'7"
Bedroom 1	2.6 x 4.8m	8'6" x 15'9"
Bedroom 2	2.9 x 3.5m	9'6" x 11'6"
TIA	61.4m <sup>2</sup>	660.8ft <sup>2</sup>

### Apartment 105

Kitchen/Living/Dining	3.0 x 7.8m	9'10" x 25'7"
Bedroom 1	3.1 x 3.3m	10'2" x 10'10"
Bedroom 2	2.9 x 3.6m	9'6" x 11'10"
Bedroom 3	2.7 x 6.4m	8'10" x 21'0"
TIA	86.4m <sup>2</sup>	929.8ft <sup>2</sup>

### Apartment 107

Kitchen/Living/Dining	3.0 x 7.9m	9'10" x 25'11"
Bedroom 1	2.7 x 5.8m	8'10" x 19'0"
TIA	43.6m <sup>2</sup>	469.4ft <sup>2</sup>

### Apartment 100

Kitchen/Living/Dining	2.9 x 7.9m	9'6" x 25'11"
Bedroom 1	2.7 x 5.9m	8'10" x 19'4"
TIA	46.0m <sup>2</sup>	494.9ft <sup>2</sup>

### Apartment 102

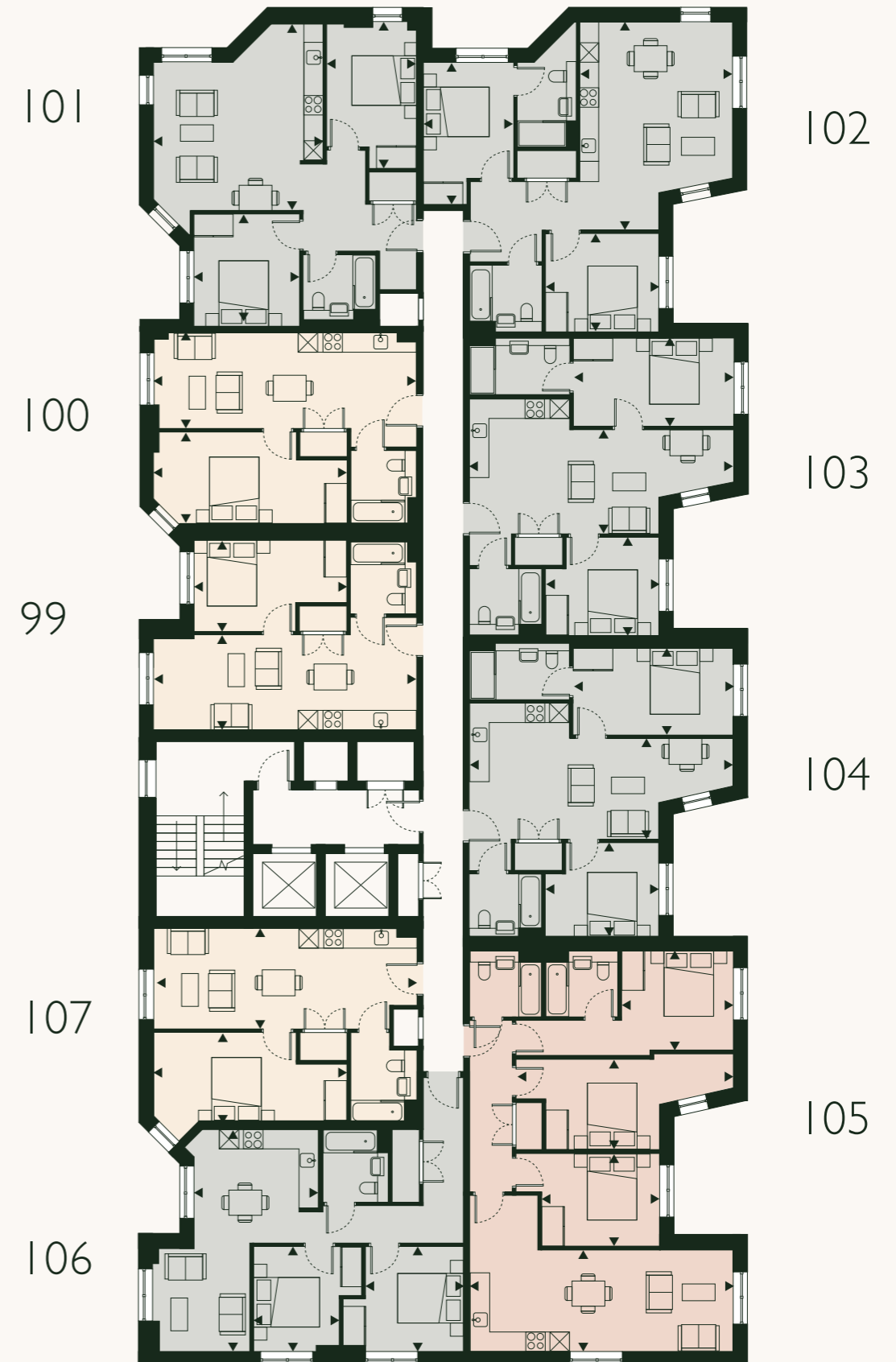
Kitchen/Living/Dining	6.2 x 4.5m	20'4" x 16'9"
Bedroom 1	4.1 x 2.7m	13'5" x 8'10"
Bedroom 2	2.9 x 3.4m	9'6" x 11'2"
TIA	66.9m <sup>2</sup>	720.2ft <sup>2</sup>

### Apartment 104

Kitchen/Living/Dining	3.1 x 7.8m	10'2" x 25'7"
Bedroom 1	2.6 x 4.8m	8'6" x 15'9"
Bedroom 2	2.9 x 3.5m	9'6" x 11'6"
TIA	61.2m <sup>2</sup>	658.3ft <sup>2</sup>

### Apartment 106

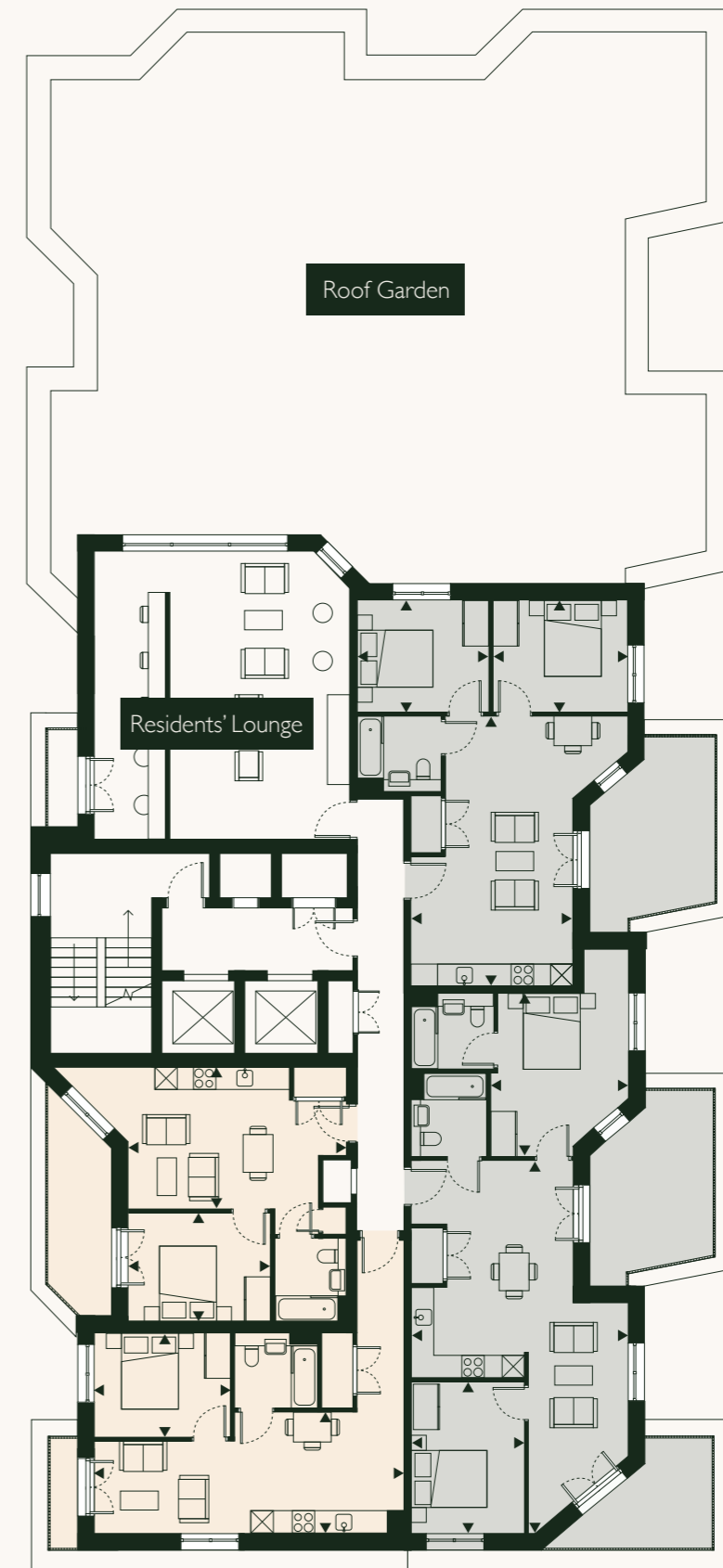
Kitchen/Living/Dining	6.7 x 3.8m	22'0" x 12'6"
Bedroom 1	3.1 x 2.9m	10'2" x 9'6"
Bedroom 2	3.2 x 2.4m	10'6" x 7'11"
TIA	60.7m <sup>2</sup>	652.8ft <sup>2</sup>



Please note, floorplans and dimensions are taken from architectural drawings and are for guidance only. Dimensions stated are within a tolerance of plus or minus 150mm. Overall dimensions are usually stated and there may be projections into these. Kitchen and bathroom layouts are indicative only.

# FLOOR 11 KEY

01 Bed 02 Bed



## Apartment 108

Kitchen/Living/Dining	7.1 x 4.3m	23'4" x 14'1"
Bedroom 1	2.8 x 3.6m	9'2" x 11'10"
Bedroom 2	2.8 x 3.4m	9'2" x 11'2"
TIA	57.2m <sup>2</sup>	615.5ft <sup>2</sup>
Balcony	12.0m <sup>2</sup>	129.2ft <sup>2</sup>

## Apartment 109

Kitchen/Living/Dining	9.7 x 5.7m	31'10" x 18'8"
Bedroom 1	4.2 x 3.6m	13'9" x 11'10"
Bedroom 2	2.8 x 3.5m	9'2" x 11'6"
TIA	73.4m <sup>2</sup>	789.5ft <sup>2</sup>
Balcony 1	12.0m <sup>2</sup>	129.2ft <sup>2</sup>
Balcony 2	8.0m <sup>2</sup>	86.1ft <sup>2</sup>

## Apartment 110

Kitchen/Living/Dining	3.1 x 8.2m	10'2" x 26'11"
Bedroom 1	2.7 x 3.6m	8'10" x 11'10"
TIA	46.2m <sup>2</sup>	497.4ft <sup>2</sup>
Balcony	2.0m <sup>2</sup>	21.5ft <sup>2</sup>

## Apartment 111

Kitchen/Living/Dining	3.7 x 5.8m	12'2" x 19'0"
Bedroom 1	2.9 x 3.7m	9'6" x 12'2"
TIA	40.2m <sup>2</sup>	432.5ft <sup>2</sup>
Balcony	8.0m <sup>2</sup>	86.1ft <sup>2</sup>

Please note, floorplans and dimensions are taken from architectural drawings and are for guidance only. Dimensions stated are within a tolerance of plus or minus 150mm. Overall dimensions are usually stated and there may be projections into these. Kitchen and bathroom layouts are indicative only.



# FLOOR 12

## KEY

01 Bed 02 Bed



### Apartment 112

Kitchen/Living/Dining	7.5 x 3.2m	24'7" x 10'6"
Bedroom 1	4.2 x 3.4m	13'9" x 11'2"
TIA	50.0m <sup>2</sup>	538.1ft <sup>2</sup>

### Apartment 114

Kitchen/Living/Dining	5.9 x 5.8m	19'4" x 19'0"
Bedroom 1	4.3 x 3.5m	14'1" x 11'6"
Bedroom 2	4.0 x 3.0m	13'2" x 9'10"
TIA	73.4m <sup>2</sup>	789.5ft <sup>2</sup>

### Apartment 116

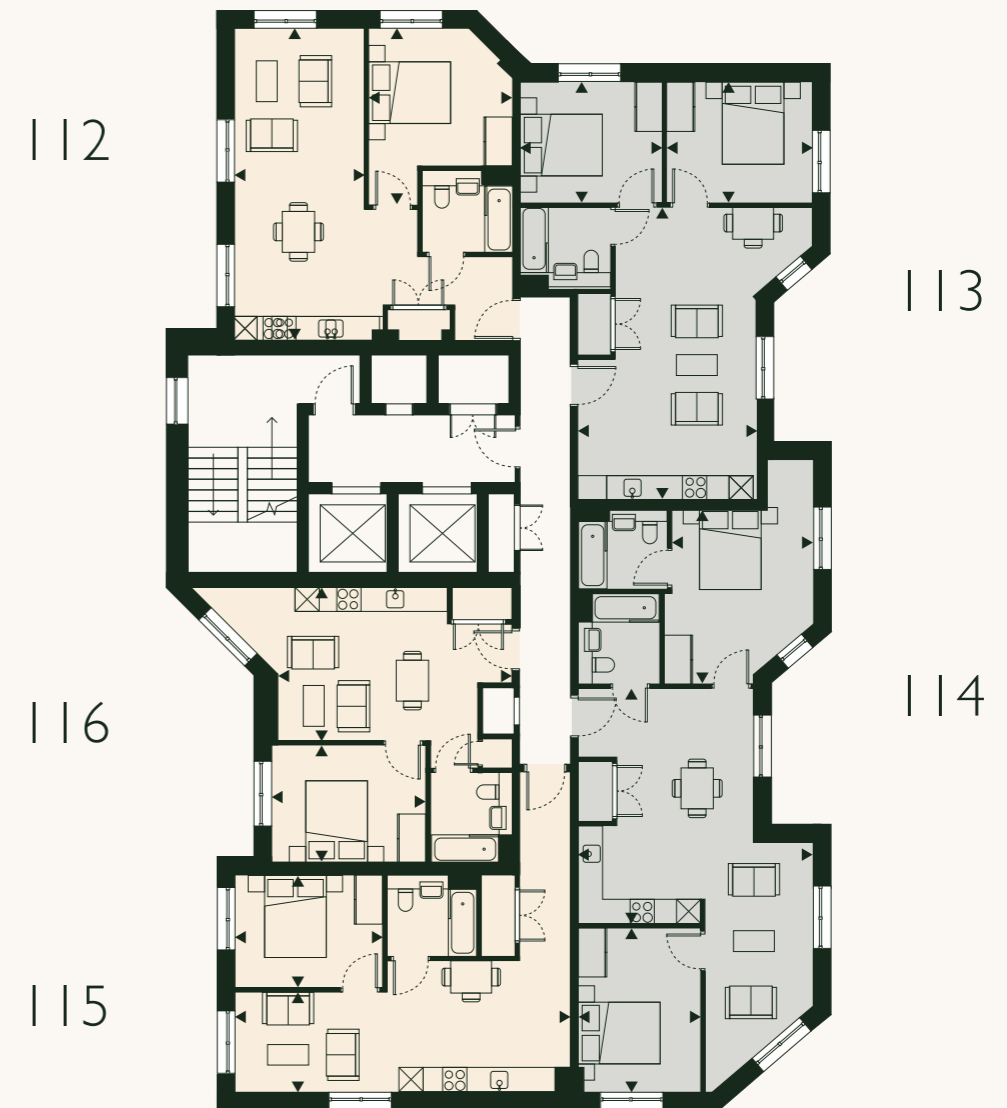
Kitchen/Living/Dining	3.8 x 5.8m	12'6" x 19'0"
Bedroom 1	2.9 x 3.7m	9'6" x 12'2"
TIA	40.2m <sup>2</sup>	432.5ft <sup>2</sup>

### Apartment 113

Kitchen/Living/Dining	7.2 x 4.3m	23'8" x 14'1"
Bedroom 1	2.8 x 3.6m	9'2" x 11'10"
Bedroom 2	2.8 x 3.5m	9'2" x 11'6"
TIA	57.2m <sup>2</sup>	615.5ft <sup>2</sup>

### Apartment 115

Kitchen/Living/Dining	2.4 x 8.2m	7'11" x 16'11"
Bedroom 1	2.8 x 3.6m	9'2" x 11'10"
TIA	46.2m <sup>2</sup>	497.4ft <sup>2</sup>



Please note, floorplans and dimensions are taken from architectural drawings and are for guidance only. Dimensions stated are within a tolerance of plus or minus 150mm. Overall dimensions are usually stated and there may be projections into these. Kitchen and bathroom layouts are indicative only.

# EXCEPTIONAL HOMES, PERFECTLY DELIVERED

A highly experienced business, Linear Group has been in the property industry for over 30 years. Starting as a subcontractor, they have grown to be a principal contractor and now, developer in their own right. This breadth of roles means that on projects, such as Trafford Gardens, they have complete control over every aspect of the development. As such, they can offer total piece of mind.

Equally reassuring is their 145-strong team's impressive track record of large-scale development projects. From landmark hotels and prestigious health centres to 400-unit plus luxury residential schemes, time and again, they have proved their expertise by delivering a diverse array of high profile large-scale developments across the UK.

[linearuk.com](http://linearuk.com)

Paragon House,  
Manchester  
*115 Apartments*



Holland Park,  
Glasgow  
*433 Apartments*



The Event Complex,  
Aberdeen





[WWW.JOSEPH-MEWS.COM](http://WWW.JOSEPH-MEWS.COM)