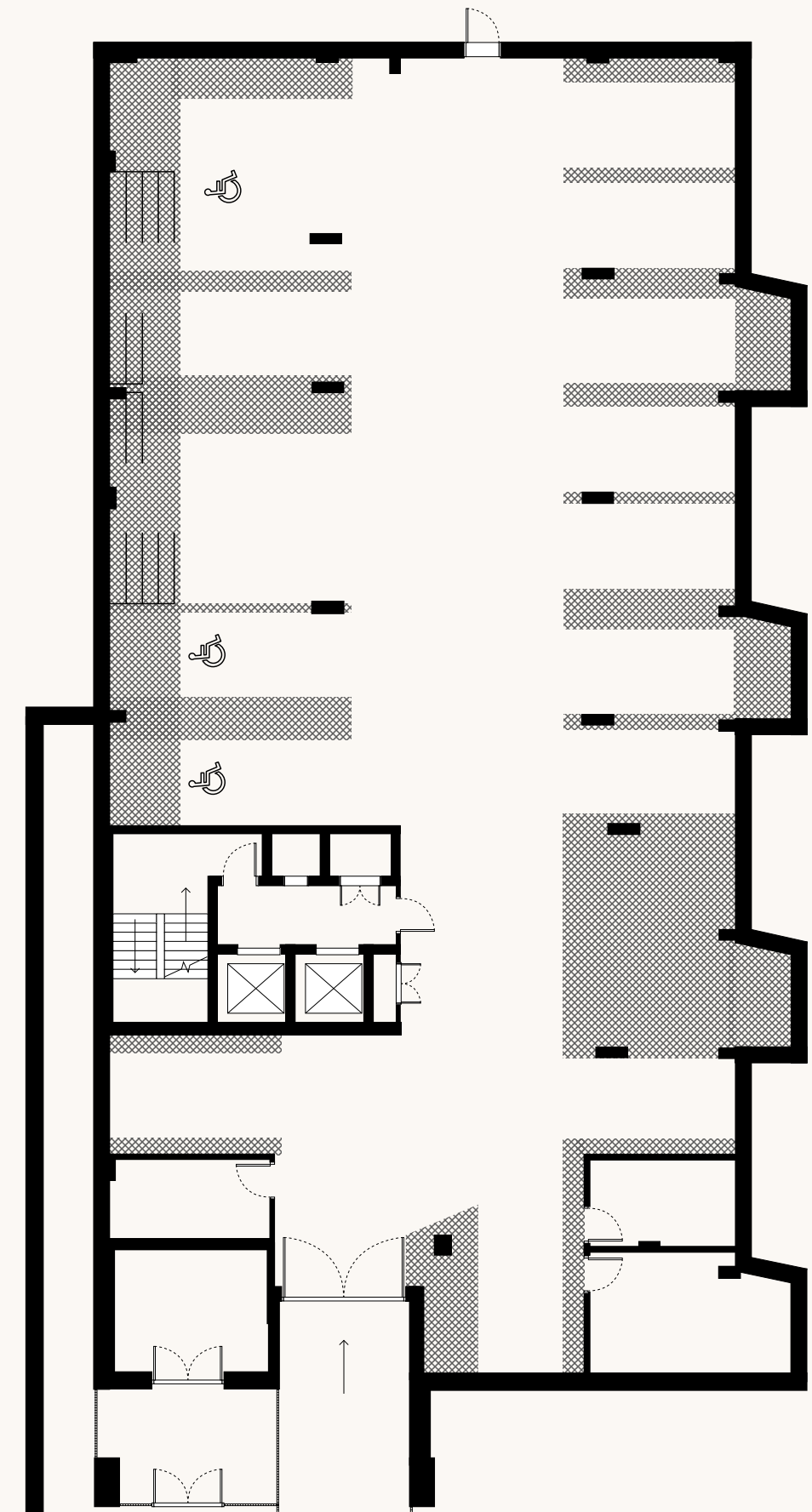


TRAFFORD
GARDENS **MCR**

FIND YOUR
FAVOURITE
FLOORPLANS.

BASEMENT

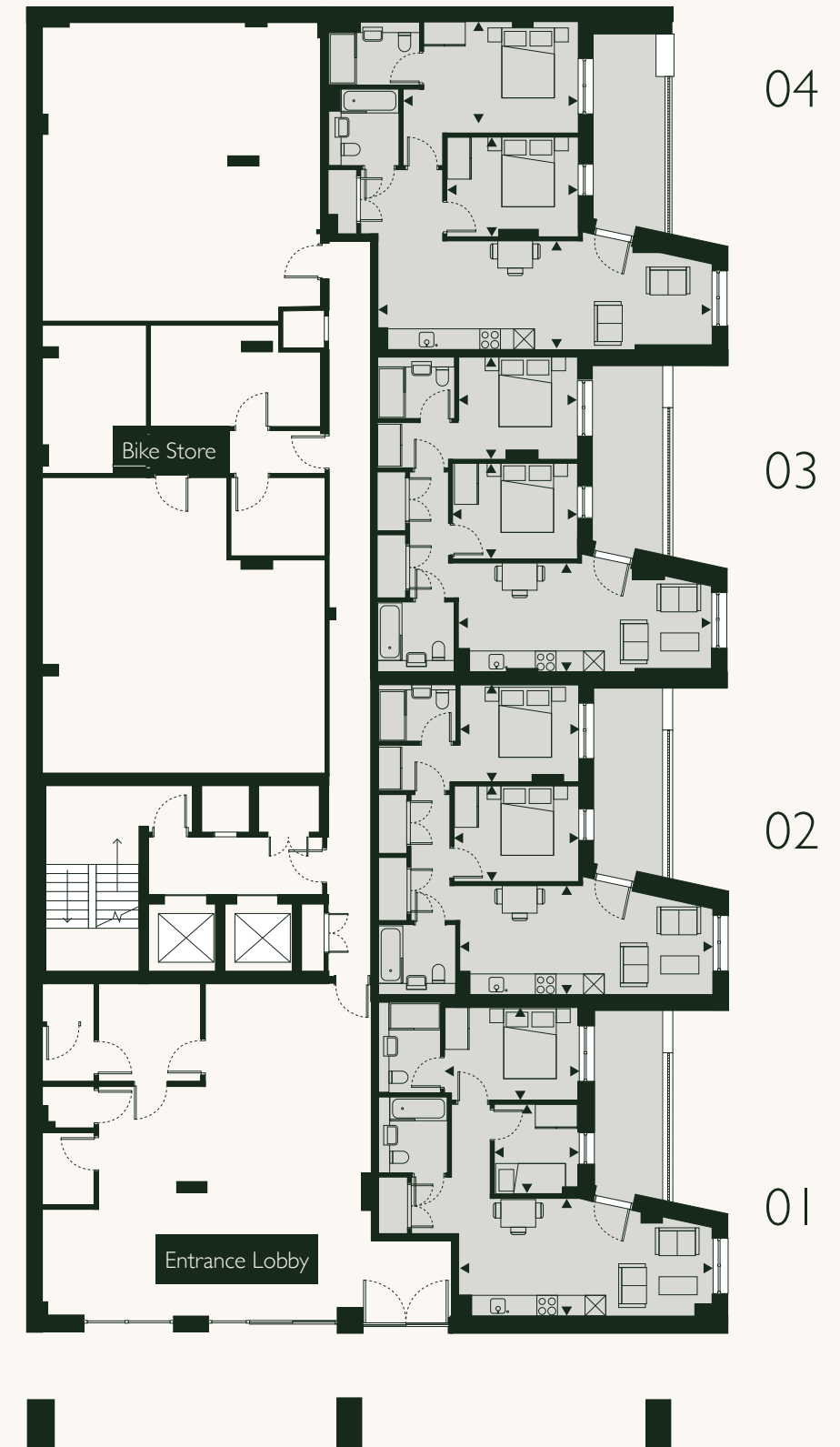


Please note, floorplans and dimensions are taken from architectural drawings and are for guidance only. Dimensions stated are within a tolerance of plus or minus 150mm. Overall dimensions are usually stated and there may be projections into these. Kitchen and bathroom layouts are indicative only.

GROUND

KEY

■ 02 Bed



Apartment 01

Kitchen/Living/Dining	3.4 x 7.1m	11'2" x 23'4"
Bedroom 1	2.8 x 3.9m	9'2" x 12'10"
Bedroom 2	2.6 x 2.5m	8'6" x 8'2"
Terrace	9.1.m ²	97.8ft ²
TIA	56.7m ²	610.4ft ²

Apartment 02

Kitchen/Living/Dining	3.3 x 7.2m	10'10" x 23'8"
Bedroom 1	2.8 x 3.5m	9'2" x 11'6"
Bedroom 2	2.7 x 3.8m	8'10" x 12'6"
Terrace	9.2m ²	98.8ft ²
TIA	62.5m ²	672.2ft ²

Apartment 03

Kitchen/Living/Dining	3.2 x 7.2m	10'6" x 23'8"
Bedroom 1	2.9 x 3.5m	9'6" x 11'6"
Bedroom 2	2.7 x 3.8m	8'10" x 12'6"
Terrace	9.0m ²	96.8ft ²
TIA	62.6m ²	673.3ft ²

Apartment 04

Kitchen/Living/Dining	3.1 x 9.5m	10'2" x 31'2"
Bedroom 1	3.1 x 5.1m	10'2" x 16'9"
Bedroom 2	2.9 x 3.9m	9'6" x 12'10"
Terrace	9.3m ²	99.6ft ²
TIA	73.6m ²	791.9ft ²

Please note, floorplans and dimensions are taken from architectural drawings and are for guidance only. Dimensions stated are within a tolerance of plus or minus 150mm. Overall dimensions are usually stated and there may be projections into these. Kitchen and bathroom layouts are indicative only.

FLOOR 01 KEY

01 Bed 02 Bed 03 Bed



Apartment 05

Kitchen/Living/Dining	3.0 x 7.9m	9'10" x 25'11"
Bedroom 1	2.8 x 5.9m	9'2" x 19'4"
TIA	46.5m ²	500.7ft ²

Apartment 07

Kitchen/Living/Dining	3.5 x 7.9m	11'6" x 25'11"
Bedroom 1	2.7 x 4.8m	8'10" x 15'9"
Bedroom 2	2.7 x 4.5m	8'10" x 14'9"
TIA	70.8m ²	762.4ft ²

Apartment 09

Kitchen/Living/Dining	3.4 x 7.4m	11'2" x 24'3"
Bedroom 1	2.9 x 3.1m	9'6" x 10'2"
Bedroom 2	2.6 x 3.8m	8'6" x 12'6"
TIA	62.6m ²	673.8ft ²

Apartment 11

Kitchen/Living/Dining	5.9 x 7.1m	19'4" x 23'4"
Bedroom 1	2.9 x 3.5m	9'6" x 11'6"
Bedroom 2	3.8 x 3.0m	12'6" x 9'10"
TIA	65.2m ²	701.5ft ²

Apartment 06

Kitchen/Living/Dining	3.1 x 7.9m	10'2" x 25'11"
Bedroom 1	2.8 x 5.9m	9'2" x 19'4"
TIA	47.3m ²	509.3ft ²

Apartment 08

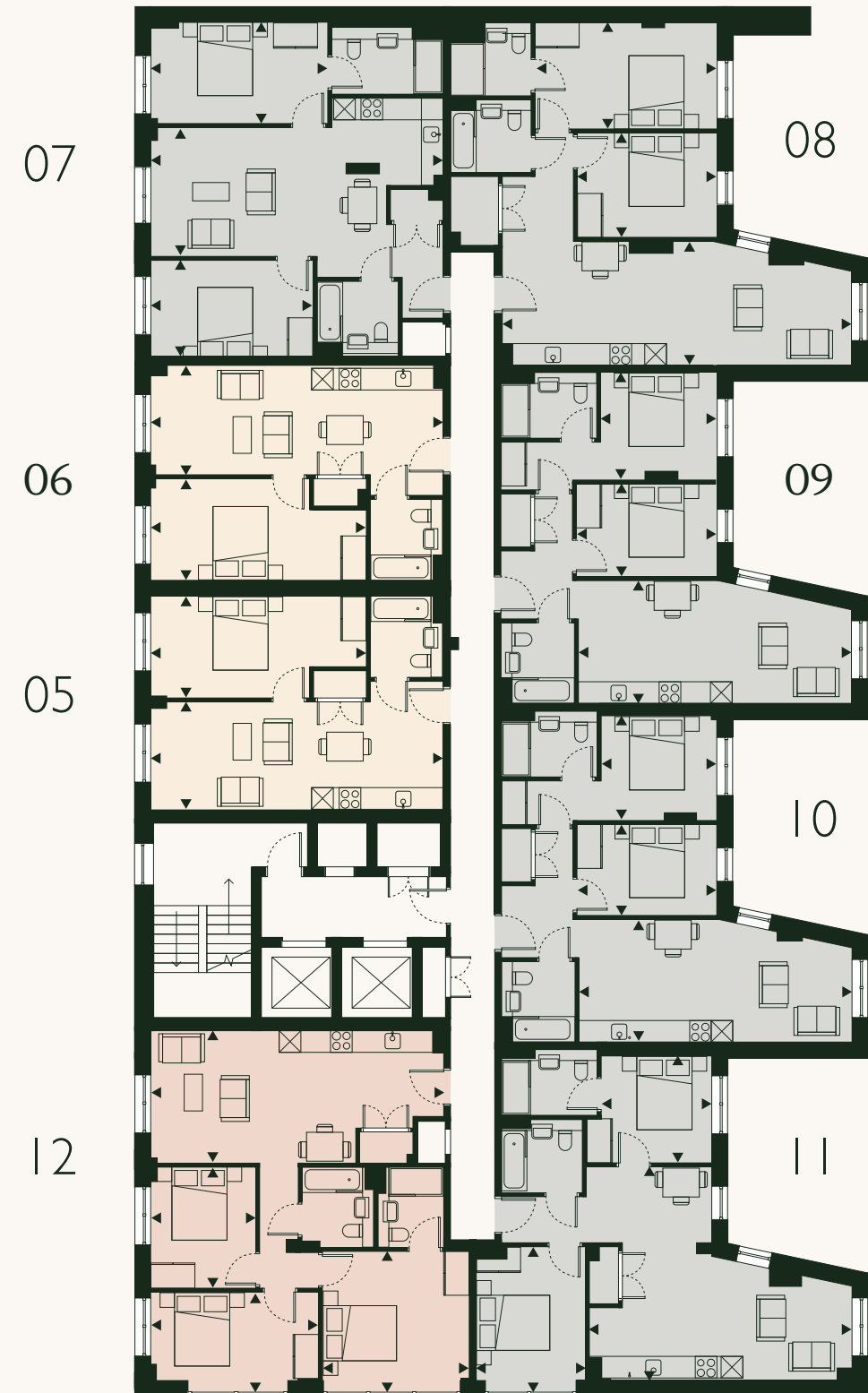
Kitchen/Living/Dining	3.4 x 9.5m	11'2" x 31'2"
Bedroom 1	2.9 x 4.9m	9'6" x 16'1"
Bedroom 2	2.9 x 3.8m	9'6" x 12'6"
TIA	73.6m ²	791.9ft ²

Apartment 10

Kitchen/Living/Dining	3.4 x 7.4m	11'2" x 24'3"
Bedroom 1	2.8 x 3.1m	9'2" x 10'2"
Bedroom 2	2.6 x 3.8m	8'6" x 12'6"
TIA	62.5m ²	672.9ft ²

Apartment 12

Kitchen/Living/Dining	3.6 x 7.9m	11'10" x 25'11"
Bedroom 1	3.8 x 4.0m	12'6" x 13'2"
Bedroom 2	2.6 x 4.6m	8'6" x 15'1"
Bedroom 3	3.4 x 2.8m	11'2" x 9'2"
TIA	77.8m ²	836.8ft ²



Please note, floorplans and dimensions are taken from architectural drawings and are for guidance only. Dimensions stated are within a tolerance of plus or minus 150mm. Overall dimensions are usually stated and there may be projections into these. Kitchen and bathroom layouts are indicative only.

FLOOR 02

KEY

01 Bed 02 Bed



Apartment 13

Kitchen/Living/Dining	3.0 x 7.9m	9'10" x 25'11"
Bedroom 1	2.8 x 5.9m	9'2" x 19'4"
TIA	46.5m ²	500.7ft ²

Apartment 15

Kitchen/Living/Dining	6.3 x 5.3m	20'8" x 17'5"
Bedroom 1	2.7 x 3.9m	8'10" x 12'10"
Bedroom 2	2.7 x 3.9m	8'10" x 12'10"
TIA	70.8m ²	762.4ft ²

Apartment 17

Kitchen/Living/Dining	3.0 x 9.5m	9'10" x 31'2"
Bedroom 1	2.9 x 5.8m	9'6" x 19'0"
TIA	51.6m ²	555.1ft ²

Apartment 19

Kitchen/Living/Dining	2.8 x 7.9m	9'2" x 25'11"
Bedroom 1	2.8 x 5.6m	9'2" x 18'5"
TIA	45.3m ²	487.1ft ²

Apartment 21

Kitchen/Living/Dining	6.6 x 5.6m	21'8" x 18'5"
Bedroom 1	2.6 x 3.5m	8'6" x 11'6"
Bedroom 2	2.5 x 3.5m	8'2" x 11'6"
TIA	60.2m ²	647.6ft ²

Apartment 23

Kitchen/Living/Dining	3.1 x 7.9m	10'2" x 25'11"
Bedroom 1	2.7 x 5.9m	8'10" x 19'4"
TIA	45.6m ²	490.6ft ²

Apartment 14

Kitchen/Living/Dining	3.1 x 7.9m	10'2" x 25'11"
Bedroom 1	2.8 x 5.9m	9'2" x 19'4"
TIA	47.3m ²	509.3ft ²

Apartment 16

Kitchen/Living/Dining	3.9 x 9.4m	12'10" x 30'10"
Bedroom 1	2.8 x 4.6m	9'2" x 15'1"
TIA	56.1m ²	604.3ft ²

Apartment 18

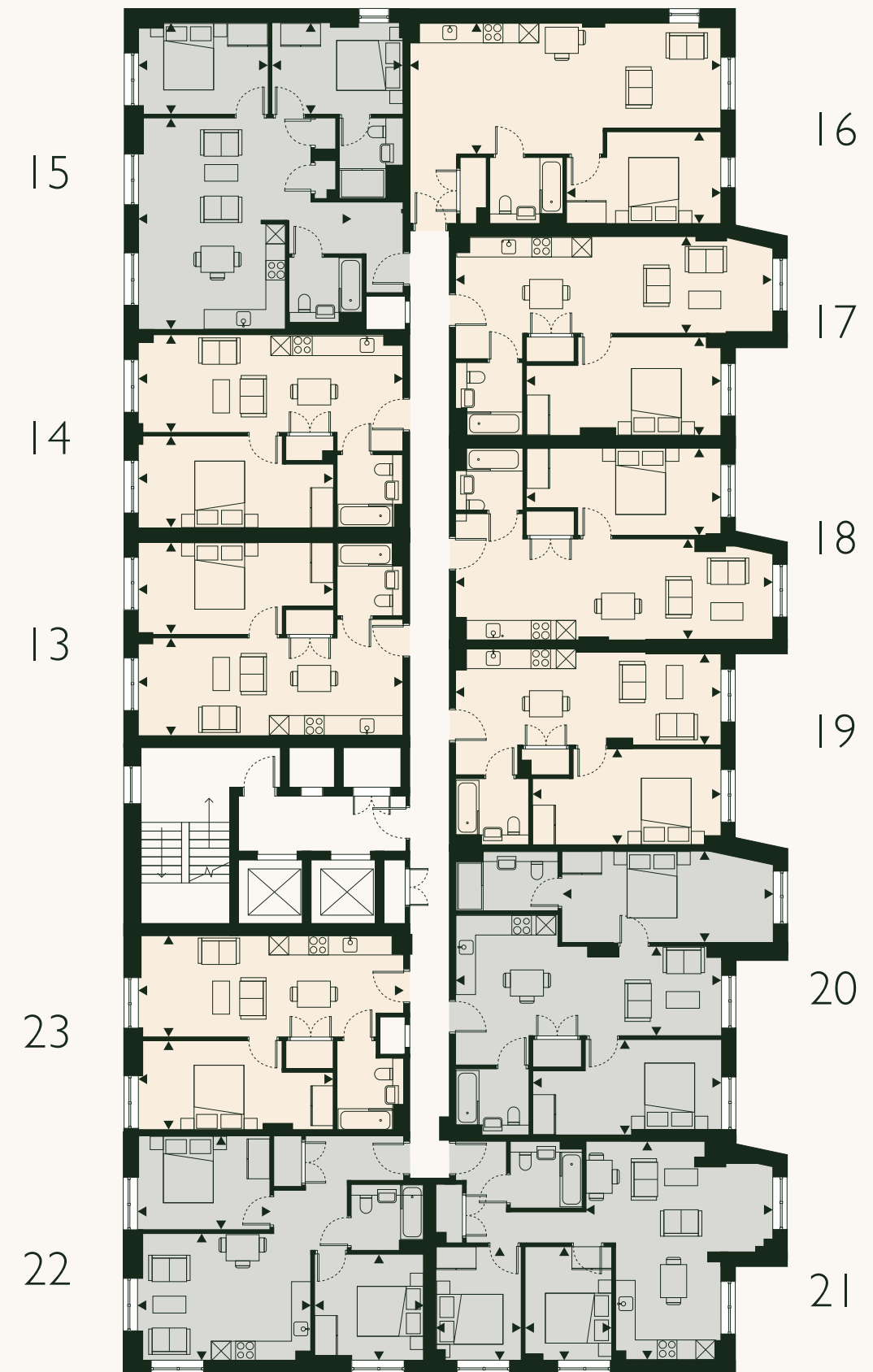
Kitchen/Living/Dining	3.0 x 9.5m	9'10" x 31'2"
Bedroom 1	2.9 x 5.8m	9'6" x 19'0"
TIA	51.6m ²	555.1ft ²

Apartment 20

Kitchen/Living/Dining	2.6 x 7.9m	8'6" x 25'11"
Bedroom 1	2.9 x 6.4m	9'6" x 21'0"
Bedroom 2	2.8 x 5.6m	9'2" x 18'5"
TIA	71.4m ²	768.8ft ²

Apartment 22

Kitchen/Living/Dining	3.9 x 5.3m	12'10" x 17'5"
Bedroom 1	2.8 x 4.0m	9'2" x 13'2"
Bedroom 2	3.2 x 3.3m	10'6" x 10'10"
TIA	57.1m ²	614.5ft ²



Please note, floorplans and dimensions are taken from architectural drawings and are for guidance only. Dimensions stated are within a tolerance of plus or minus 150mm. Overall dimensions are usually stated and there may be projections into these. Kitchen and bathroom layouts are indicative only.

FLOOR 03 KEY

01 Bed 02 Bed



Apartment 24

Kitchen/Living/Dining	3.0 x 7.9m	9'10" x 25'11"
Bedroom 1	2.8 x 5.9m	9'2" x 19'4"
TIA	46.5m ²	500.7ft ²

Apartment 26

Kitchen/Living/Dining	6.3 x 5.3m	20'8" x 17'5"
Bedroom 1	2.7 x 3.9m	8'10" x 12'10"
Bedroom 2	2.7 x 3.9m	8'10" x 12'10"
TIA	70.8m ²	762.4ft ²

Apartment 28

Kitchen/Living/Dining	3.0 x 7.9m	9'10" x 25'11"
Bedroom 1	2.9 x 5.8m	9'6" x 19'0"
TIA	47.3m ²	508.7ft ²
Balcony	2.0m ²	21.5ft ²

Apartment 30

Kitchen/Living/Dining	2.8 x 7.9m	9'2" x 25'11"
Bedroom 1	2.8 x 5.6m	9'2" x 18'5"
TIA	45.3m ²	487.1ft ²

Apartment 32

Kitchen/Living/Dining	6.6 x 3.2m	21'8" x 10'6"
Bedroom 1	3.5 x 2.6m	11'6" x 8'6"
Bedroom 2	3.5 x 2.5m	11'6" x 8'2"
TIA	55.9m ²	601.3ft ²
Balcony	2.0m ²	21.5ft ²

Apartment 34

Kitchen/Living/Dining	3.1 x 7.9m	10'2" x 25'11"
Bedroom 1	2.7 x 5.9m	8'10" x 19'4"
TIA	45.5m ²	490.1ft ²

Apartment 25

Kitchen/Living/Dining	3.1 x 7.9m	10'2" x 25'11"
Bedroom 1	2.8 x 5.9m	9'2" x 19'4"
TIA	47.3m ²	509.3ft ²

Apartment 27

Kitchen/Living/Dining	3.1 x 9.4m	10'2" x 30'10"
Bedroom 1	2.8 x 4.6m	9'2" x 15'1"
TIA	56.1m ²	604.3ft ²

Apartment 29

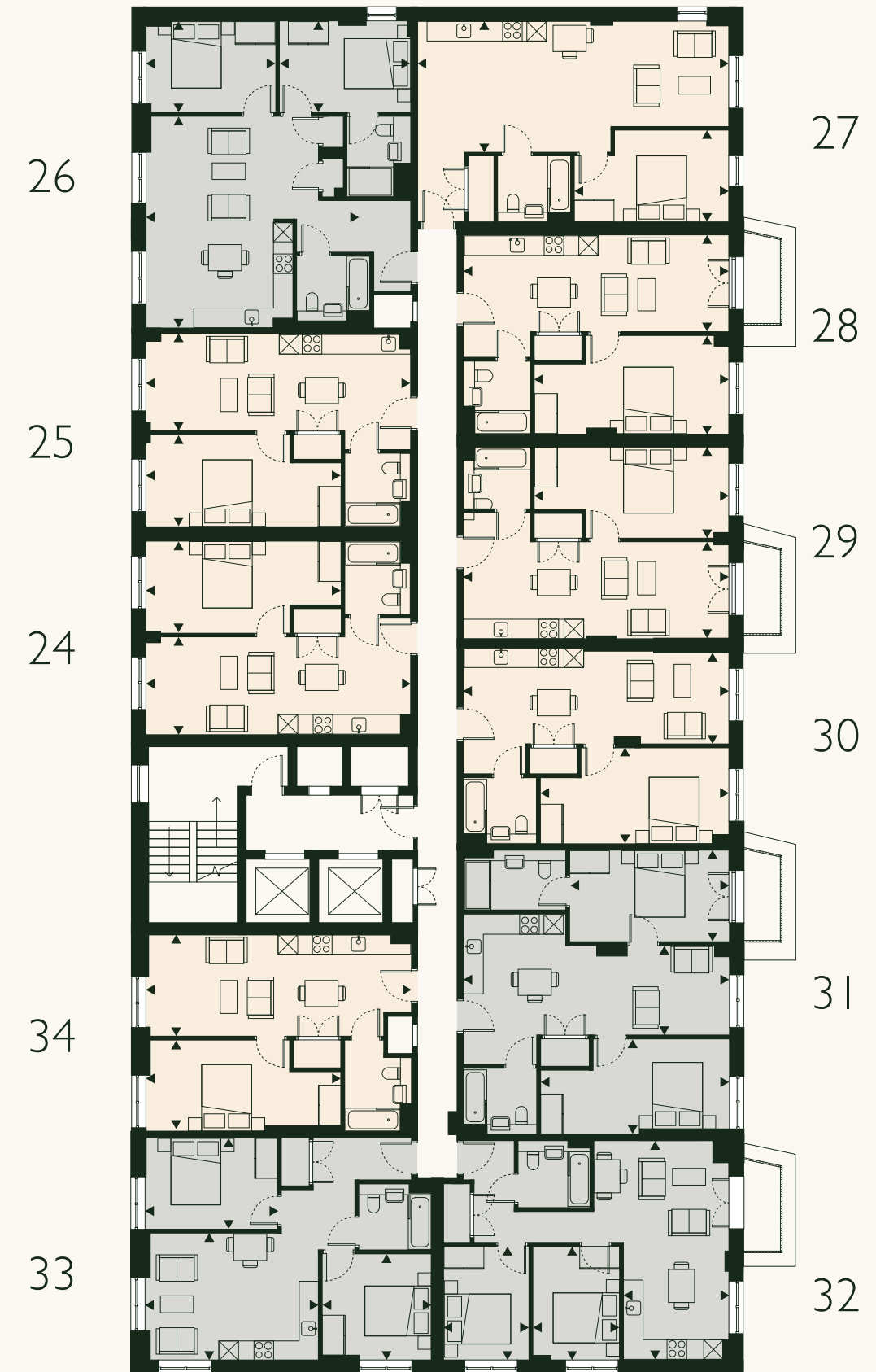
Kitchen/Living/Dining	3.0 x 7.9m	9'10" x 25'11"
Bedroom 1	2.9 x 5.8m	9'6" x 19'0"
TIA	47.3m ²	508.7ft ²
Balcony	2.0m ²	21.5ft ²

Apartment 31

Kitchen/Living/Dining	2.6 x 7.9m	8'6" x 25'11"
Bedroom 1	2.9 x 4.8m	9'6" x 15'9"
Bedroom 2	2.8 x 5.6m	9'2" x 18'5"
TIA	67.1m ²	722.5ft ²
Balcony	2.0m ²	21.5ft ²

Apartment 33

Kitchen/Living/Dining	3.9 x 5.3m	12'10" x 17'5"
Bedroom 1	2.8 x 4.0m	9'2" x 13'2"
Bedroom 2	3.0 x 3.2m	9'10" x 10'6"
TIA	57.1m ²	614.5ft ²



Please note, floorplans and dimensions are taken from architectural drawings and are for guidance only. Dimensions stated are within a tolerance of plus or minus 150mm. Overall dimensions are usually stated and there may be projections into these. Kitchen and bathroom layouts are indicative only.

Apartment 35			
Kitchen/Living/Dining	3.5 x 6.7m	11'6" x 22'0"	
Bedroom 1	2.9 x 5.9m	9'6" x 19'4"	
TIA	42.6m ²	458.1ft ²	
Balcony	2.0m ²	21.5ft ²	

Apartment 37			
Kitchen/Living/Dining	6.3 x 4.5m	20'8" x 14'9"	
Bedroom 1	2.7 x 3.9m	8'10" x 12'10"	
Bedroom 2	2.7 x 5.9m	8'10" x 19'4"	
TIA	66.7m ²	717.5ft ²	
Balcony	2.0m ²	21.5ft ²	

Apartment 39			
Kitchen/Living/Dining	3.0 x 7.9m	9'10" x 25'11"	
Bedroom 1	2.9 x 5.8m	9'6" x 19'0"	
TIA	47.8m ²	514.0ft ²	

Apartment 41			
Kitchen/Living/Dining	2.8 x 7.9m	9'2" x 25'11"	
Bedroom 1	3.0 x 3.5m	9'10" x 11'6"	
TIA	39.7m ²	427.2ft ²	
Balcony	4.0m ²	43.1ft ²	

Apartment 43			
Kitchen/Living/Dining	6.1 x 4.1m	20'0" x 13'5"	
Bedroom 1	3.5 x 2.6m	11'6" x 8'6"	
Bedroom 2	3.5 x 2.6m	11'6" x 8'6"	
TIA	54.7m ²	588.8ft ²	

Apartment 45			
Kitchen/Living/Dining	3.1 x 6.7m	10'2" x 22'0"	
Bedroom 1	2.7 x 5.9m	8'10" x 19'4"	
TIA	40.9m ²	440.5ft ²	
Balcony	2.0m ²	21.5ft ²	

Apartment 36			
Kitchen/Living/Dining	3.1 x 7.9m	10'2" x 25'11"	
Bedroom 1	2.8 x 5.9m	9'2" x 19'4"	
TIA	47.3m ²	509.3ft ²	

Apartment 38			
Kitchen/Living/Dining	3.1 x 9.4m	10'2" x 30'10"	
Bedroom 1	2.8 x 4.6m	9'2" x 15'1"	
TIA	56.1m ²	604.3ft ²	

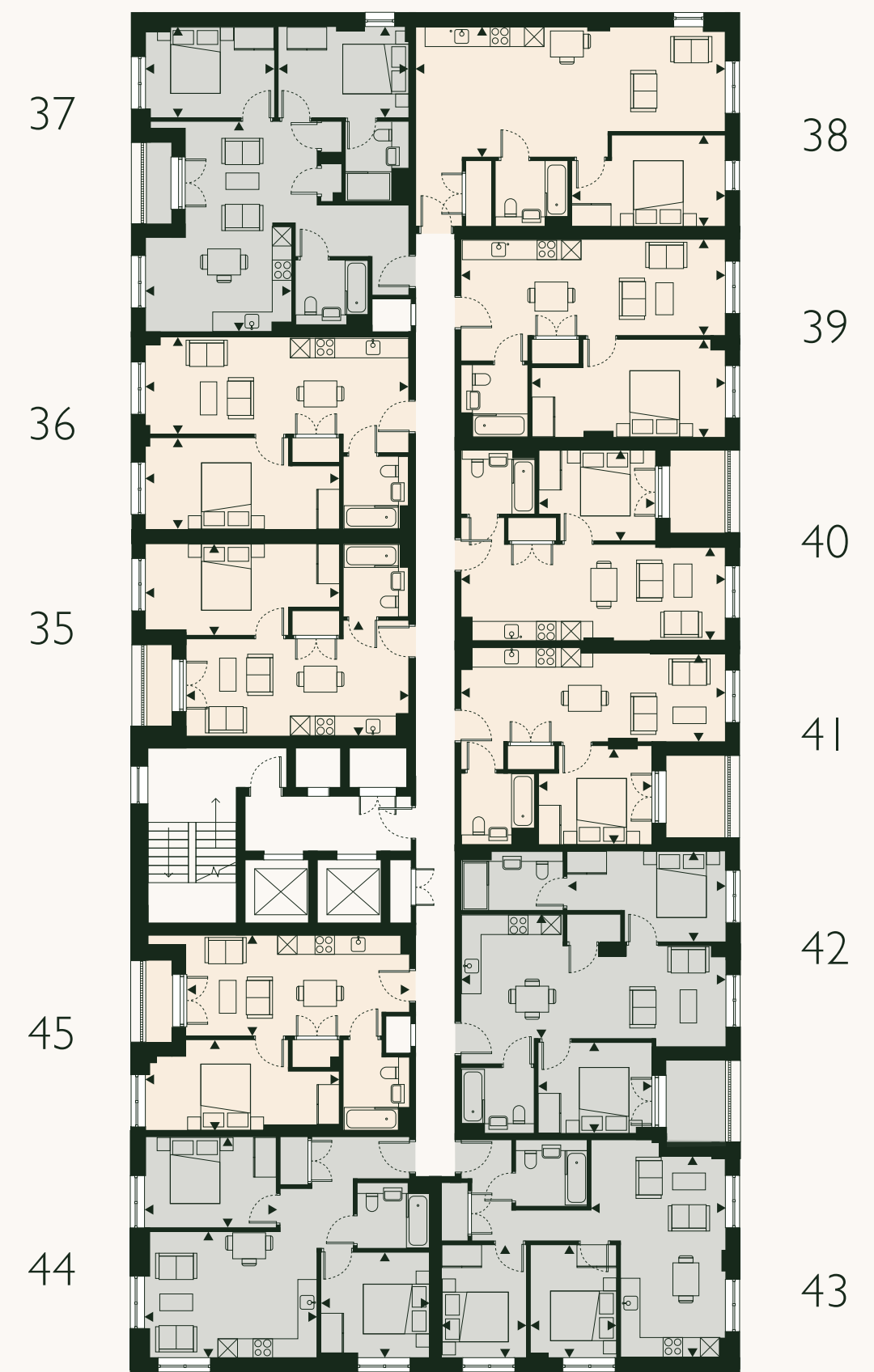
Apartment 40			
Kitchen/Living/Dining	2.8 x 7.9m	9'2" x 25'11"	
Bedroom 1	3.0 x 3.5m	9'10" x 11'6"	
TIA	39.7m ²	427.2ft ²	
Balcony	4.0m ²	43.1ft ²	

Apartment 42			
Kitchen/Living/Dining	3.8 x 7.9m	12'6" x 25'11"	
Bedroom 1	2.7 x 4.8m	8'10" x 15'9"	
Bedroom 2	2.7 x 3.5m	8'10" x 11'6"	
TIA	61.0m ²	656.1ft ²	
Balcony	4.0m ²	43.1ft ²	

Apartment 44			
Kitchen/Living/Dining	3.9 x 5.3m	12'10" x 17'5"	
Bedroom 1	2.8 x 4.0m	9'2" x 13'2"	
Bedroom 2	3.3 x 3.3m	10'10" x 10'10"	
TIA	57.1m ²	614.5ft ²	

FLOOR 04 KEY

01 Bed 02 Bed



Please note, floorplans and dimensions are taken from architectural drawings and are for guidance only. Dimensions stated are within a tolerance of plus or minus 150mm. Overall dimensions are usually stated and there may be projections into these. Kitchen and bathroom layouts are indicative only.

Apartment 46			
Kitchen/Living/Dining	3.5 x 6.7m	11'6" x 22'0"	
Bedroom 1	2.9 x 5.9m	9'6" x 19'4"	
TIA	42.6m ²	458.1ft ²	
Balcony	2.0m ²	21.5ft ²	

Apartment 48			
Kitchen/Living/Dining	6.3 x 4.5m	20'8" x 14'9"	
Bedroom 1	2.7 x 3.9m	8'10" x 12'10"	
Bedroom 2	2.7 x 5.9m	8'10" x 19'4"	
TIA	66.7m ²	717.5ft ²	
Balcony	2.0m ²	21.5ft ²	

Apartment 50			
Kitchen/Living/Dining	3.0 x 7.9m	9'10" x 25'11"	
Bedroom 1	2.9 x 5.8m	9'6" x 19'0"	
TIA	47.8m ²	514.0ft ²	

Apartment 52			
Kitchen/Living/Dining	2.8 x 7.9m	9'2" x 25'11"	
Bedroom 1	3.0 x 3.5m	9'10" x 11'6"	
TIA	39.7m ²	427.2ft ²	
Balcony	4.0m ²	43.1ft ²	

Apartment 54			
Kitchen/Living/Dining	6.1 x 4.1m	20'0" x 13'5"	
Bedroom 1	3.5 x 2.6m	11'6" x 8'6"	
Bedroom 2	3.5 x 2.6m	11'6" x 8'6"	
TIA	54.7m ²	588.8ft ²	

Apartment 56			
Kitchen/Living/Dining	3.1 x 6.7m	10'2" x 22'0"	
Bedroom 1	2.7 x 5.9m	8'10" x 19'4"	
TIA	40.9m ²	440.5ft ²	
Balcony	2.0m ²	21.5ft ²	

Apartment 47			
Kitchen/Living/Dining	3.1 x 7.9m	10'2" x 25'11"	
Bedroom 1	2.8 x 5.9m	9'2" x 19'4"	
TIA	47.3m ²	509.3ft ²	

Apartment 49			
Kitchen/Living/Dining	3.1 x 9.4m	10'2" x 30'10"	
Bedroom 1	2.8 x 4.6m	9'2" x 15'1"	
TIA	56.1m ²	604.3ft ²	

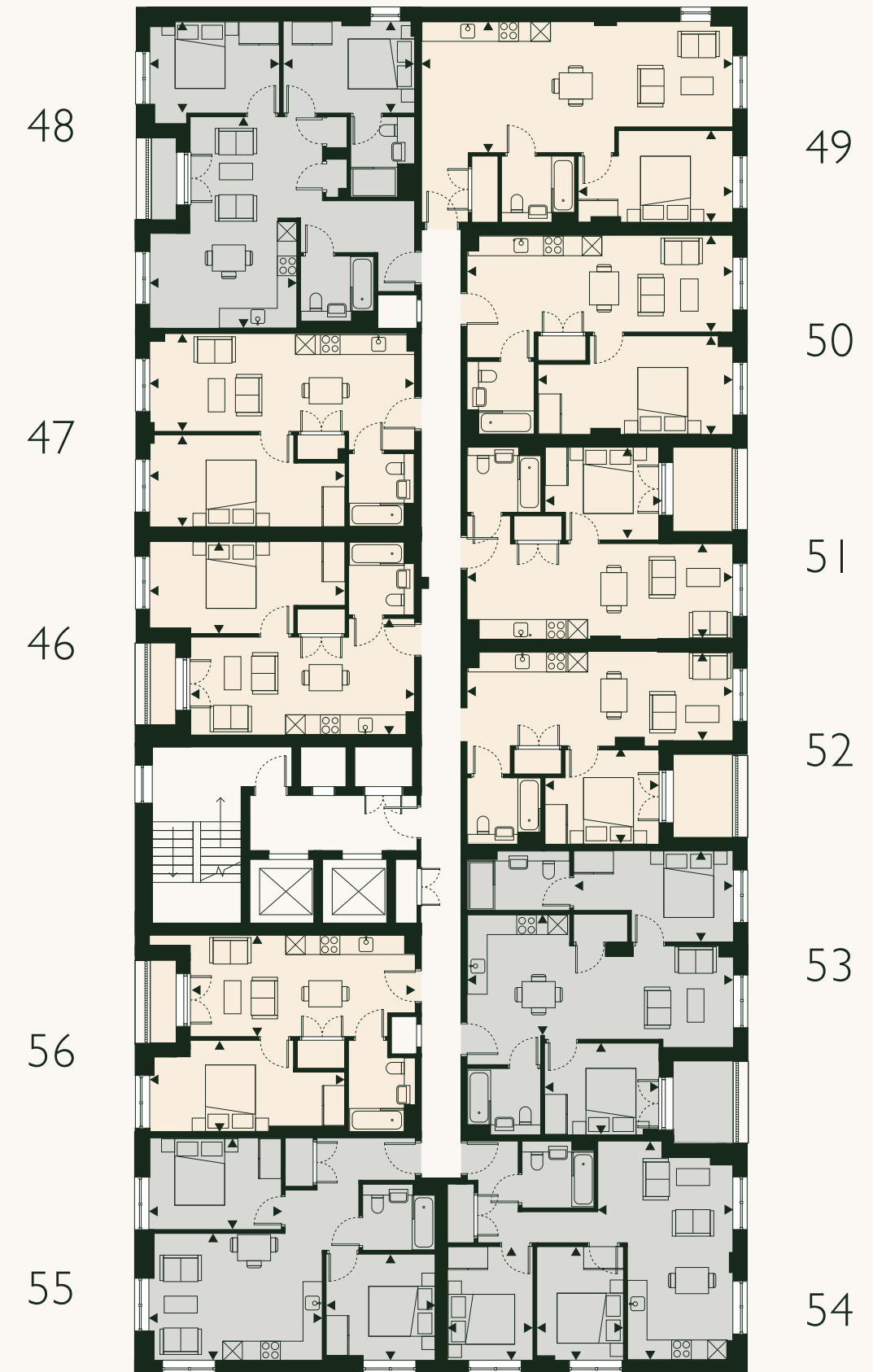
Apartment 51			
Kitchen/Living/Dining	2.8 x 7.9m	9'2" x 25'11"	
Bedroom 1	3.0 x 3.5m	9'10" x 11'6"	
TIA	39.7m ²	427.2ft ²	
Balcony	4.0m ²	43.1ft ²	

Apartment 53			
Kitchen/Living/Dining	3.8 x 7.9m	12'6" x 25'11"	
Bedroom 1	2.7 x 4.8m	8'10" x 15'9"	
Bedroom 2	2.7 x 3.5m	8'10" x 11'6"	
TIA	61.0m ²	656.1ft ²	
Balcony	4.0m ²	43.1ft ²	

Apartment 55			
Kitchen/Living/Dining	3.9 x 5.3m	12'10" x 17'5"	
Bedroom 1	2.8 x 4.0m	9'2" x 13'2"	
Bedroom 2	3.3 x 3.3m	10'10" x 10'10"	
TIA	57.1m ²	614.5ft ²	

FLOOR 05 KEY

01 Bed 02 Bed



Please note, floorplans and dimensions are taken from architectural drawings and are for guidance only. Dimensions stated are within a tolerance of plus or minus 150mm. Overall dimensions are usually stated and there may be projections into these. Kitchen and bathroom layouts are indicative only.

Apartment 57

Kitchen/Living/Dining	3.0 x 6.7m	9'10" x 22'0"
Bedroom 1	2.9 x 5.9m	9'6" x 19'4"
TIA	43.6m ²	469.11ft ²
Balcony	2.0m ²	21.5ft ²

Apartment 59

Kitchen/Living/Dining	6.3 x 5.3m	20'8" x 17'5"
Bedroom 1	2.7 x 3.9m	8'10" x 12'10"
Bedroom 2	2.7 x 3.9m	8'10" x 12'10"
TIA	67.1m ²	722.4ft ²
Balcony	2.0m ²	21.5ft ²

Apartment 61

Kitchen/Living/Dining	2.8 x 7.9m	9'2" x 25'11"
Bedroom 1	3.1 x 3.7m	10'2" x 12'2"
TIA	40.7m ²	438.0ft ²
Balcony	2.0m ²	21.5ft ²

Apartment 63

Kitchen/Living/Dining	2.9 x 7.9m	9'6" x 25'11"
Bedroom 1	2.9 x 5.6m	9'6" x 18'5"
TIA	45.5m ²	489.5ft ²

Apartment 65

Kitchen/Living/Dining	6.6 x 4.1m	21'8" x 13'5"
Bedroom 1	3.5 x 2.6m	11'6" x 8'6"
Bedroom 2	3.5 x 2.6m	11'6" x 8'6"
TIA	55.9m ²	601.3ft ²

Apartment 67

Kitchen/Living/Dining	3.1 x 7.9m	10'2" x 25'11"
Bedroom 1	2.7 x 5.9m	8'10" x 19'4"
TIA	45.5m ²	490.1ft ²

Apartment 58

Kitchen/Living/Dining	3.0 x 7.9m	9'10" x 25'11"
Bedroom 1	2.8 x 5.9m	9'2" x 19'4"
TIA	46.3m ²	498.0ft ²

Apartment 60

Kitchen/Living/Dining	4.3 x 9.4m	14'1" x 30'10"
Bedroom 1	3.1 x 4.6m	10'2" x 15'1"
TIA	56.6m ²	608.7ft ²

Apartment 62

Kitchen/Living/Dining	2.9 x 7.9m	9'6" x 25'11"
Bedroom 1	2.8 x 3.5m	9'2" x 11'6"
TIA	40.2m ²	432.5ft ²
Balcony	4.0m ²	43.1ft ²

Apartment 64

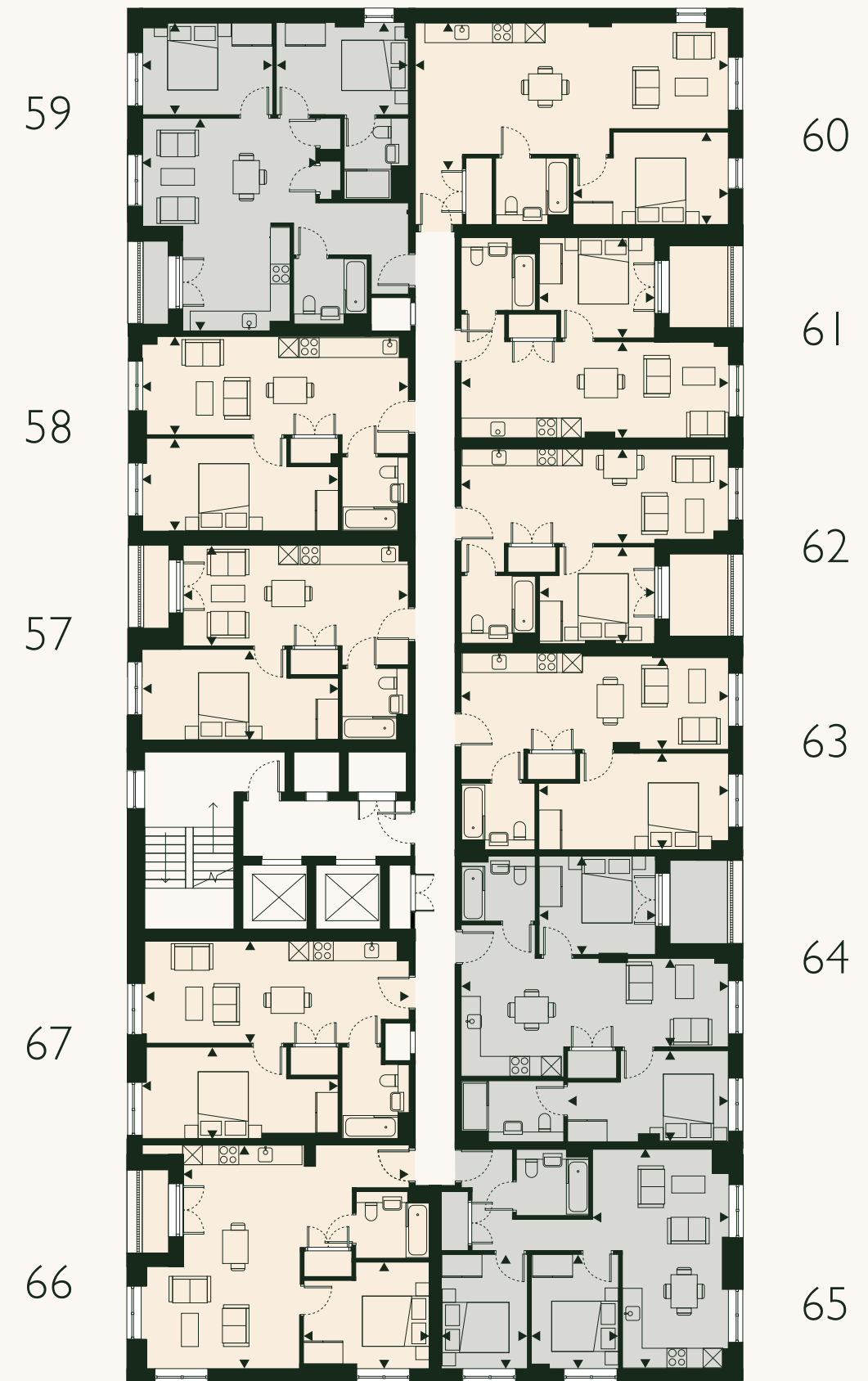
Kitchen/Living/Dining	2.6 x 7.9m	8'6" x 25'11"
Bedroom 1	2.7 x 4.8m	8'10" x 15'9"
Bedroom 2	3.0 x 3.7m	9'10" x 12'2"
TIA	60.4m ²	650.6ft ²
Balcony	4.0m ²	43.1ft ²

Apartment 66

Kitchen/Living/Dining	6.7 x 6.7m	22'0" x 22'0"
Bedroom 1	3.2 x 3.8m	10'6" x 12'6"
TIA	52.5m ²	565.4ft ²
Balcony	2.0m ²	21.5ft ²

FLOOR 06 KEY

01 Bed 02 Bed



Please note, floorplans and dimensions are taken from architectural drawings and are for guidance only. Dimensions stated are within a tolerance of plus or minus 150mm. Overall dimensions are usually stated and there may be projections into these. Kitchen and bathroom layouts are indicative only.

Apartment 68

Kitchen/Living/Dining	3.0 x 6.7m	9'10" x 22'0"
Bedroom 1	2.9 x 5.9m	9'6" x 19'4"
TIA	43.6m ²	469.11ft ²
Balcony	2.0m ²	21.5ft ²

Apartment 70

Kitchen/Living/Dining	6.3 x 5.3m	20'8" x 17'5"
Bedroom 1	2.7 x 3.9m	8'10" x 12'10"
Bedroom 2	2.7 x 3.9m	8'10" x 12'10"
TIA	67.1m ²	722.4ft ²
Balcony	2.0m ²	21.5ft ²

Apartment 72

Kitchen/Living/Dining	2.8 x 7.9m	9'2" x 25'11"
Bedroom 1	3.1 x 3.7m	10'2" x 12'2"
TIA	40.7m ²	438.0ft ²
Balcony	4.0m ²	43.1ft ²

Apartment 74

Kitchen/Living/Dining	2.9 x 7.9m	9'6" x 25'11"
Bedroom 1	2.9 x 5.6m	9'6" x 18'5"
TIA	45.5m ²	489.5ft ²

Apartment 76

Kitchen/Living/Dining	6.6 x 4.1m	21'8" x 13'5"
Bedroom 1	3.5 x 2.6m	11'6" x 8'6"
Bedroom 2	3.5 x 2.6m	11'6" x 8'6"
TIA	55.9m ²	601.3ft ²

Apartment 78

Kitchen/Living/Dining	3.1 x 7.9m	10'2" x 25'11"
Bedroom 1	2.7 x 5.9m	8'10" x 19'4"
TIA	45.5m ²	490.1ft ²

Apartment 69

Kitchen/Living/Dining	3.0 x 7.9m	9'10" x 25'11"
Bedroom 1	2.8 x 5.9m	9'2" x 19'4"
TIA	46.3m ²	498.0ft ²

Apartment 71

Kitchen/Living/Dining	4.3 x 9.4m	14'1" x 30'10"
Bedroom 1	3.1 x 4.6m	10'2" x 15'1"
TIA	56.6m ²	608.7ft ²

Apartment 73

Kitchen/Living/Dining	2.9 x 7.9m	9'6" x 25'11"
Bedroom 1	2.8 x 3.5m	9'2" x 11'6"
TIA	40.2m ²	432.5ft ²
Balcony	4.0m ²	43.1ft ²

Apartment 75

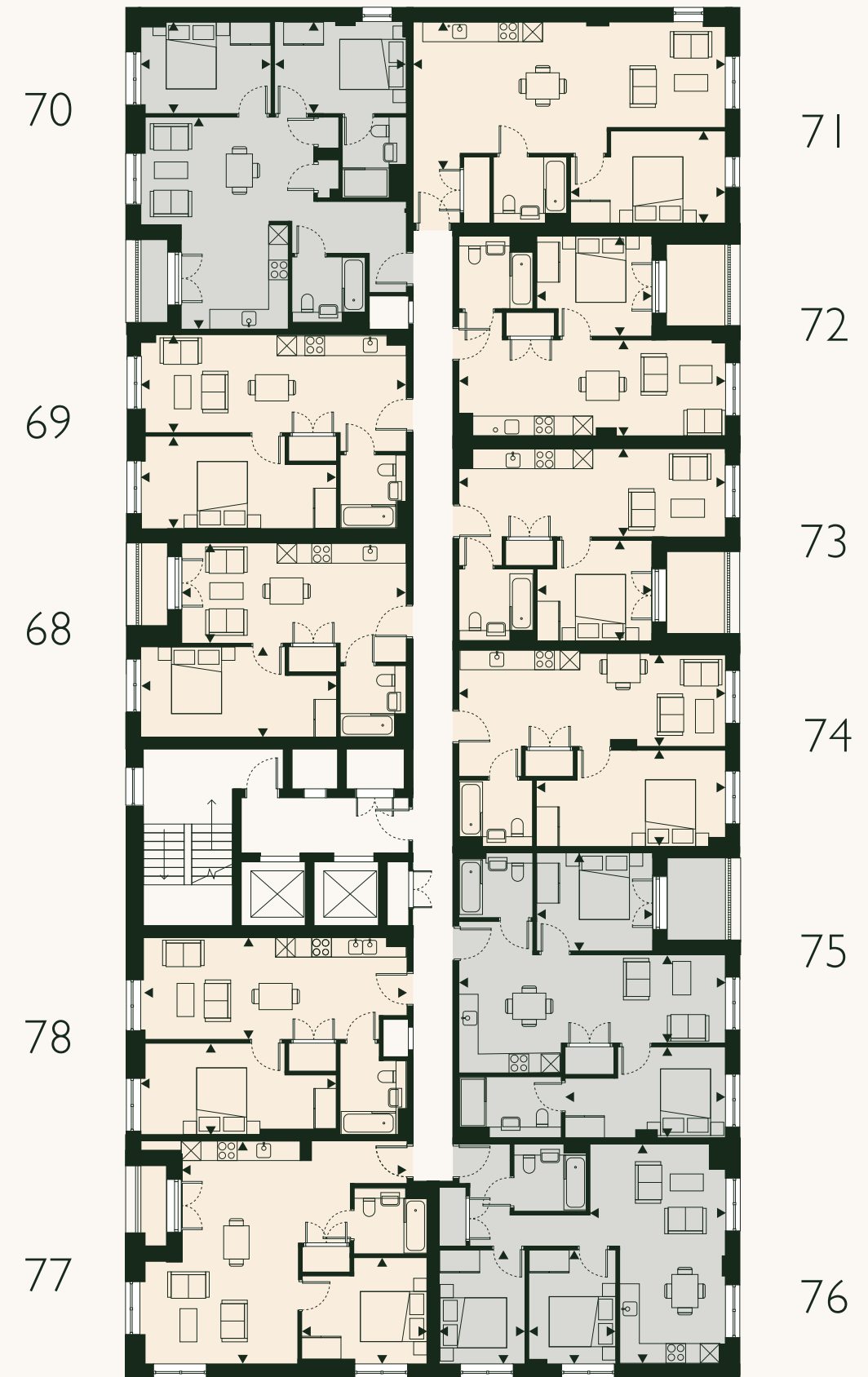
Kitchen/Living/Dining	2.6 x 7.9m	8'6" x 25'11"
Bedroom 1	2.7 x 4.8m	8'10" x 15'9"
Bedroom 2	3.0 x 3.7m	9'10" x 12'2"
TIA	60.4m ²	650.6ft ²
Balcony	4.0m ²	43.1ft ²

Apartment 77

Kitchen/Living/Dining	6.7 x 6.7m	22'0" x 22'0"
Bedroom 1	3.2 x 3.8m	10'6" x 12'6"
TIA	52.5m ²	565.4ft ²
Balcony	2.0m ²	21.5ft ²

FLOOR 07 KEY

01 Bed 02 Bed



Please note, floorplans and dimensions are taken from architectural drawings and are for guidance only. Dimensions stated are within a tolerance of plus or minus 150mm. Overall dimensions are usually stated and there may be projections into these. Kitchen and bathroom layouts are indicative only.

Apartment 79			
Kitchen/Living/Dining	3.0 x 6.7m	9'10" x 22'0"	
Bedroom 1	2.9 x 5.9m	9'6" x 19'4"	
TIA	43.6m ²	469.11ft ²	
Balcony	2.0m ²	21.5ft ²	

Apartment 81			
Kitchen/Living/Dining	6.3 x 5.3m	20'8" x 17'5"	
Bedroom 1	2.7 x 3.9m	8'10" x 12'10"	
Bedroom 2	2.7 x 3.9m	8'10" x 12'10"	
TIA	67.1m ²	722.4ft ²	
Balcony	2.0m ²	21.5ft ²	

Apartment 83			
Kitchen/Living/Dining	2.8 x 7.9m	9'2" x 25'11"	
Bedroom 1	3.1 x 3.7m	10'2" x 12'2"	
TIA	40.7m ²	438.0ft ²	
Balcony	4.0m ²	43.1ft ²	

Apartment 85			
Kitchen/Living/Dining	2.9 x 7.9m	9'6" x 25'11"	
Bedroom 1	2.9 x 5.6m	9'6" x 18'5"	
TIA	45.5m ²	489.5ft ²	

Apartment 87			
Kitchen/Living/Dining	6.6 x 4.1m	21'8" x 13'5"	
Bedroom 1	3.5 x 2.6m	11'6" x 8'6"	
Bedroom 2	3.5 x 2.6m	11'6" x 8'6"	
TIA	55.9m ²	601.3ft ²	

Apartment 89			
Kitchen/Living/Dining	3.1 x 7.9m	10'2" x 25'11"	
Bedroom 1	2.7 x 5.9m	8'10" x 19'4"	
TIA	45.5m ²	490.1ft ²	

Apartment 80			
Kitchen/Living/Dining	3.0 x 7.9m	9'10" x 25'11"	
Bedroom 1	2.8 x 5.9m	9'2" x 19'4"	
TIA	46.3m ²	498.0ft ²	

Apartment 82			
Kitchen/Living/Dining	4.3 x 9.4m	14'1" x 30'10"	
Bedroom 1	3.1 x 4.6m	10'2" x 15'1"	
TIA	56.6m ²	608.7ft ²	

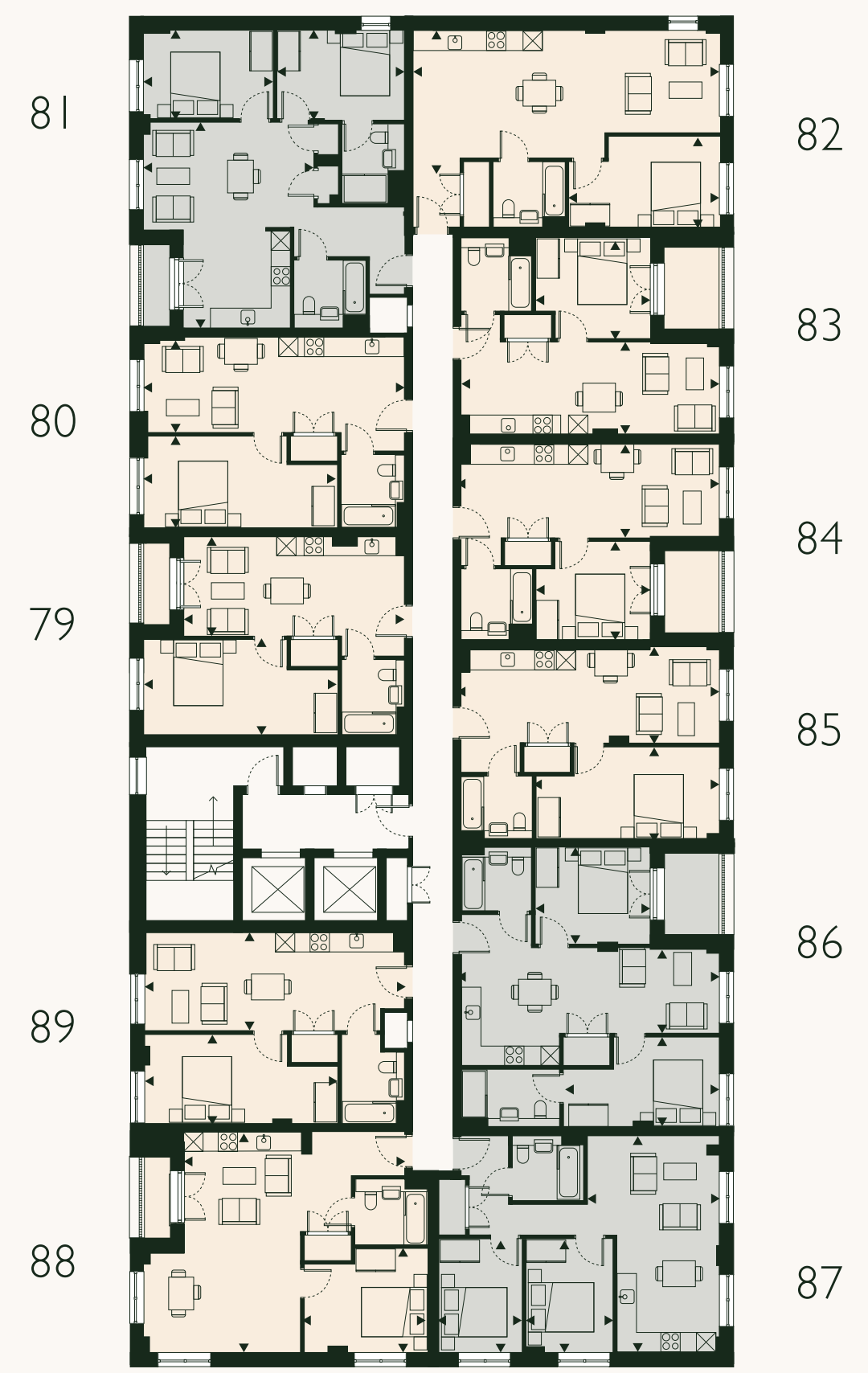
Apartment 84			
Kitchen/Living/Dining	2.9 x 7.9m	9'6" x 25'11"	
Bedroom 1	2.8 x 3.5m	9'2" x 11'6"	
TIA	40.2m ²	432.5ft ²	
Balcony	4.0m ²	43.1ft ²	

Apartment 86			
Kitchen/Living/Dining	2.6 x 7.9m	8'6" x 25'11"	
Bedroom 1	2.7 x 4.8m	8'10" x 15'9"	
Bedroom 2	3.0 x 3.7m	9'10" x 12'2"	
TIA	60.4m ²	650.6ft ²	
Balcony	4.0m ²	43.1ft ²	

Apartment 88			
Kitchen/Living/Dining	6.7 x 6.7m	22'0" x 22'0"	
Bedroom 1	3.2 x 3.8m	10'6" x 12'6"	
TIA	52.5m ²	565.4ft ²	
Balcony	2.0m ²	21.5ft ²	

FLOOR 08 KEY

01 Bed 02 Bed



Please note, floorplans and dimensions are taken from architectural drawings and are for guidance only. Dimensions stated are within a tolerance of plus or minus 150mm. Overall dimensions are usually stated and there may be projections into these. Kitchen and bathroom layouts are indicative only.

FLOOR 09 KEY

01 Bed 02 Bed 03 Bed



Apartment 90

Kitchen/Living/Dining	3.0 x 6.7m	9'10" x 22'0"
Bedroom 1	2.8 x 5.8m	9'2" x 19'0"
TIA	43.6m ²	469.4ft ²
Balcony	2.0m ²	21.5ft ²

Apartment 92

Kitchen/Living/Dining	5.6 x 5.1m	18'5" x 16'9"
Bedroom 1	4.3 x 2.7m	14'1" x 8'10"
Bedroom 2	3.2 x 3.2m	10'6" x 10'6"
TIA	63.5m ²	683.4ft ²
Balcony 1	2.0m ²	21.5ft ²
Balcony 2	2.0m ²	21.5ft ²

Apartment 94

Kitchen/Living/Dining	3.1 x 7.8m	10'2" x 25'7"
Bedroom 1	2.6 x 4.8m	8'6" x 15'9"
Bedroom 2	2.9 x 3.5m	9'6" x 11'6"
TIA	61.4m ²	660.8ft ²
Balcony	6.0m ²	64.6ft ²

Apartment 96

Kitchen/Living/Dining	3.0 x 7.8m	9'10" x 25'7"
Bedroom 1	3.1 x 3.3m	10'2" x 10'10"
Bedroom 2	2.9 x 3.6m	9'6" x 11'10"
Bedroom 3	2.7 x 6.4m	8'10" x 21'0"
TIA	86.4m ²	929.8ft ²
Balcony	6.0m ²	64.6ft ²

Apartment 98

Kitchen/Living/Dining	3.0 x 7.9m	9'10" x 25'11"
Bedroom 1	2.7 x 5.8m	8'10" x 19'0"
TIA	43.6m ²	469.4ft ²

Apartment 91

Kitchen/Living/Dining	2.9 x 7.9m	9'6" x 25'11"
Bedroom 1	2.7 x 5.9m	8'10" x 19'4"
TIA	46.0m ²	494.9ft ²

Apartment 93

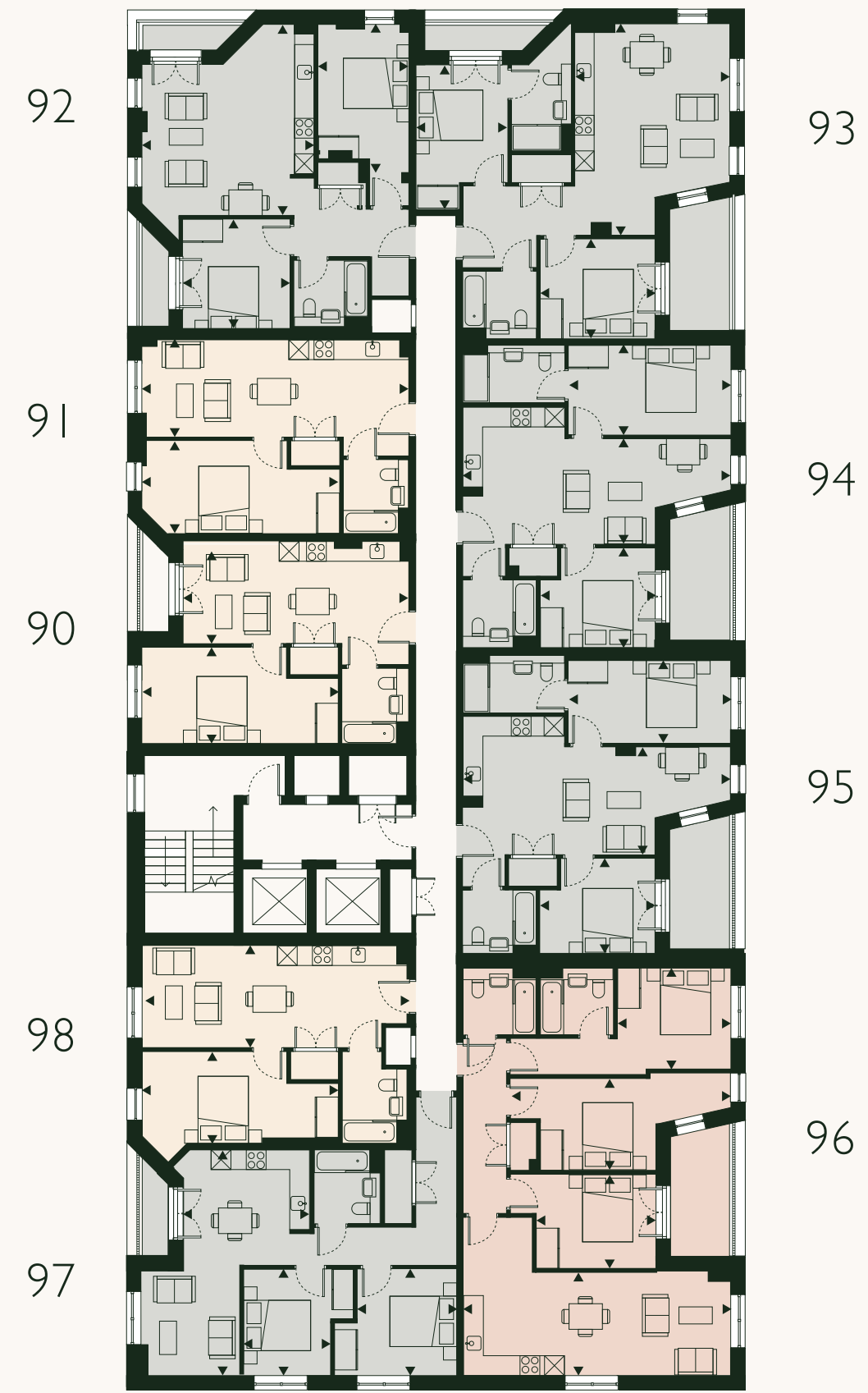
Kitchen/Living/Dining	6.2 x 4.5m	20'4" x 14'9"
Bedroom 1	4.1 x 2.7m	13'5" x 8'10"
Bedroom 2	2.9 x 3.4m	9'6" x 11'2"
TIA	66.9m ²	720.2ft ²
Balcony 1	6.0m ²	64.6ft ²
Balcony 2	3.0m ²	32.3ft ²

Apartment 95

Kitchen/Living/Dining	3.1 x 7.8m	10'2" x 25'7"
Bedroom 1	2.6 x 4.7m	8'6" x 15'5"
Bedroom 2	2.9 x 3.5m	9'6" x 11'6"
TIA	61.2m ²	658.3ft ²
Balcony	6.0m ²	64.6ft ²

Apartment 97

Kitchen/Living/Dining	6.7 x 3.8m	22'0" x 12'6"
Bedroom 1	3.1 x 2.9m	10'2" x 9'6"
Bedroom 2	3.2 x 2.4m	10'6" x 7'11"
TIA	60.7m ²	652.8ft ²
Balcony	2.0m ²	21.5ft ²



Please note, floorplans and dimensions are taken from architectural drawings and are for guidance only. Dimensions stated are within a tolerance of plus or minus 150mm. Overall dimensions are usually stated and there may be projections into these. Kitchen and bathroom layouts are indicative only.

FLOOR 10

KEY

01 Bed 02 Bed 03 Bed



Apartment 99

Kitchen/Living/Dining	3.0 x 6.7m	9'10" x 22'0"
Bedroom 1	2.8 x 5.8m	9'2" x 19'0"
TIA	43.6m ²	469.4ft ²

Apartment 101

Kitchen/Living/Dining	5.6 x 4.5m	18'5" x 14'9"
Bedroom 1	4.3 x 2.7m	14'1" x 8'10"
Bedroom 2	3.2 x 3.2m	10'6" x 10'6"
TIA	63.5m ²	683.4ft ²

Apartment 103

Kitchen/Living/Dining	3.1 x 7.8m	10'2" x 25'7"
Bedroom 1	2.6 x 4.8m	8'6" x 15'9"
Bedroom 2	2.9 x 3.5m	9'6" x 11'6"
TIA	61.4m ²	660.8ft ²

Apartment 105

Kitchen/Living/Dining	3.0 x 7.8m	9'10" x 25'7"
Bedroom 1	3.1 x 3.3m	10'2" x 10'10"
Bedroom 2	2.9 x 3.6m	9'6" x 11'10"
Bedroom 3	2.7 x 6.4m	8'10" x 21'0"
TIA	86.4m ²	929.8ft ²

Apartment 107

Kitchen/Living/Dining	3.0 x 7.9m	9'10" x 25'11"
Bedroom 1	2.7 x 5.8m	8'10" x 19'0"
TIA	43.6m ²	469.4ft ²

Apartment 100

Kitchen/Living/Dining	2.9 x 7.9m	9'6" x 25'11"
Bedroom 1	2.7 x 5.9m	8'10" x 19'4"
TIA	46.0m ²	494.9ft ²

Apartment 102

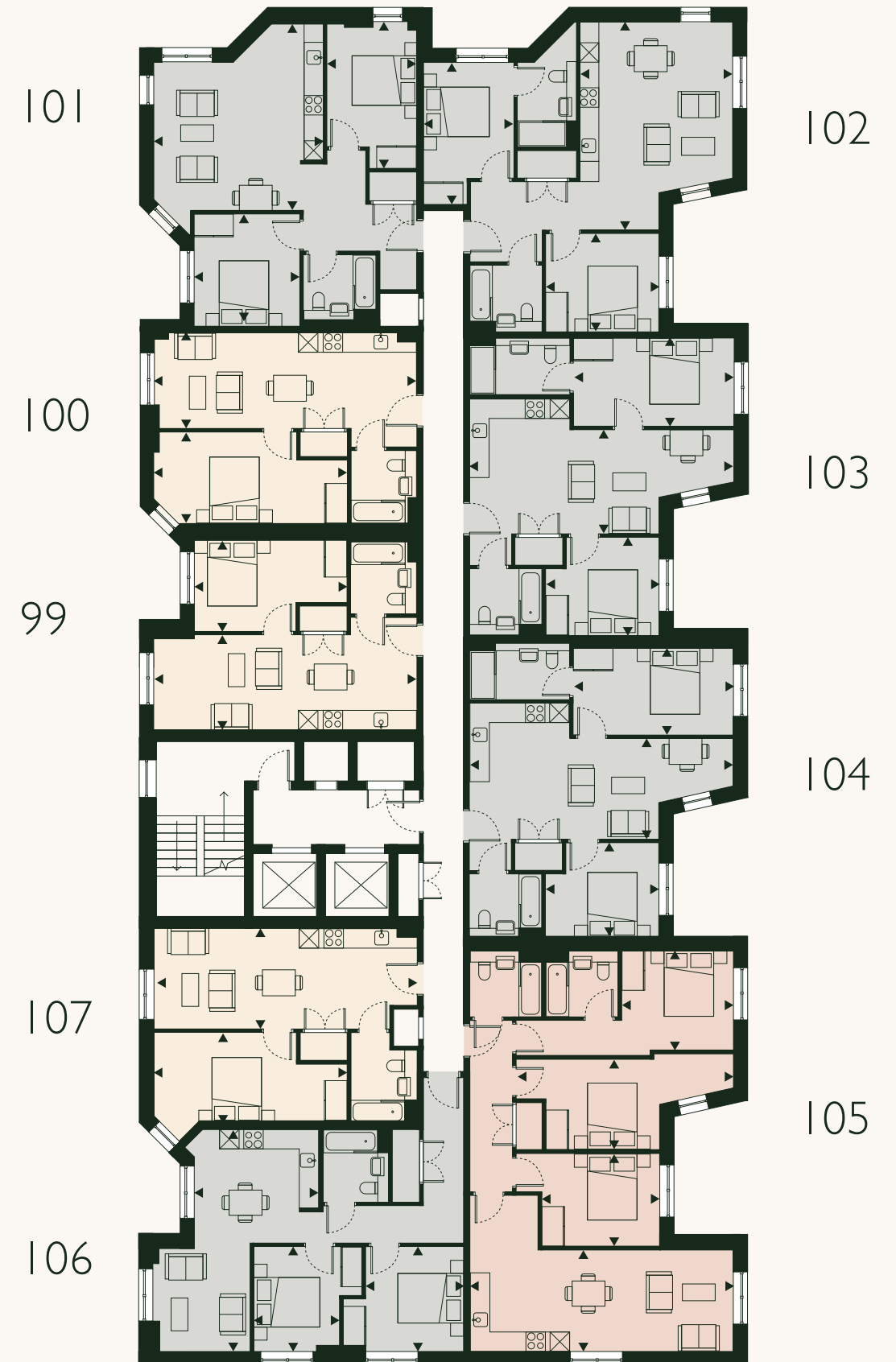
Kitchen/Living/Dining	6.2 x 4.5m	20'4" x 16'9"
Bedroom 1	4.1 x 2.7m	13'5" x 8'10"
Bedroom 2	2.9 x 3.4m	9'6" x 11'2"
TIA	66.9m ²	720.2ft ²

Apartment 104

Kitchen/Living/Dining	3.1 x 7.8m	10'2" x 25'7"
Bedroom 1	2.6 x 4.8m	8'6" x 15'9"
Bedroom 2	2.9 x 3.5m	9'6" x 11'6"
TIA	61.2m ²	658.3ft ²

Apartment 106

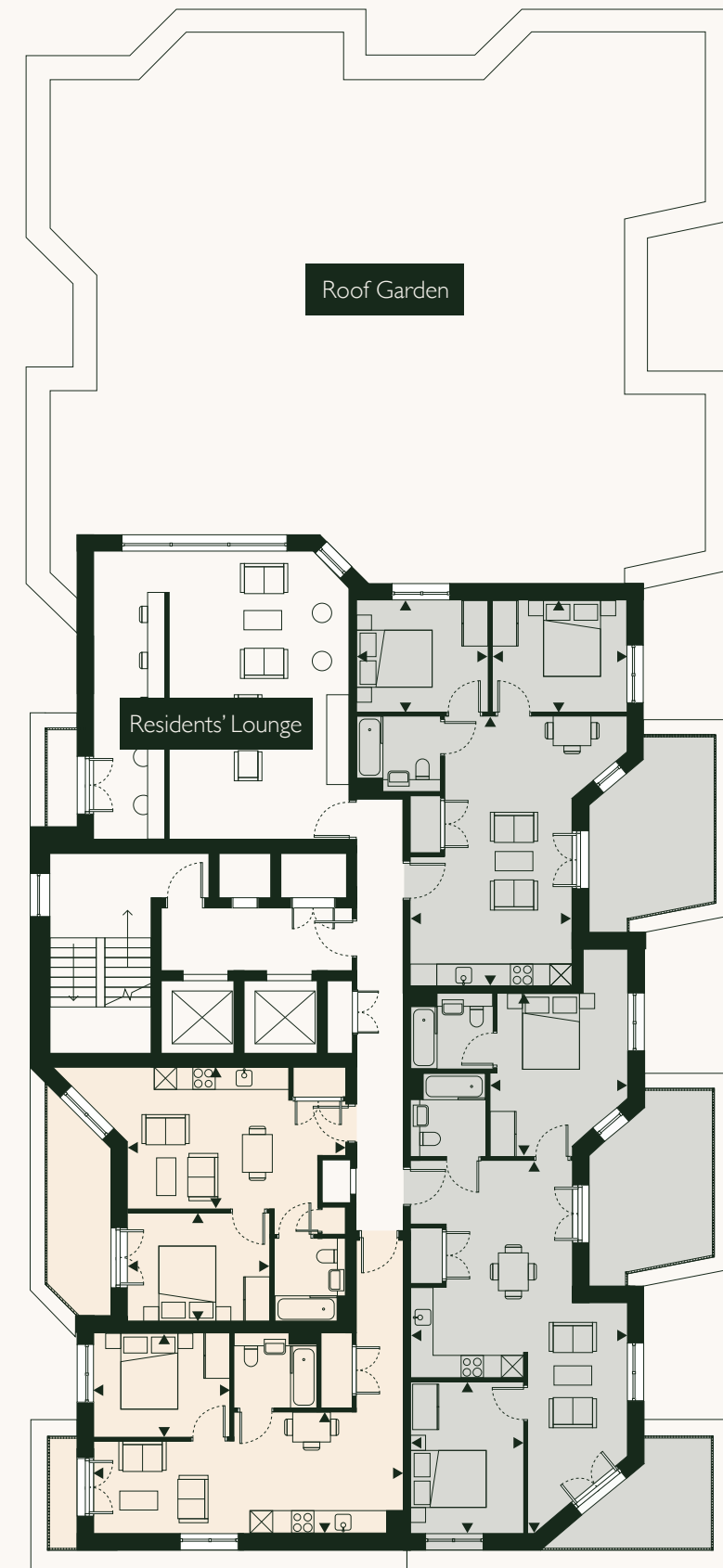
Kitchen/Living/Dining	6.7 x 3.8m	22'0" x 12'6"
Bedroom 1	3.1 x 2.9m	10'2" x 9'6"
Bedroom 2	3.2 x 2.4m	10'6" x 7'11"
TIA	60.7m ²	652.8ft ²



Please note, floorplans and dimensions are taken from architectural drawings and are for guidance only. Dimensions stated are within a tolerance of plus or minus 150mm. Overall dimensions are usually stated and there may be projections into these. Kitchen and bathroom layouts are indicative only.

FLOOR 11 KEY

01 Bed 02 Bed



Apartment 108

Kitchen/Living/Dining	7.1 x 4.3m	23'4" x 14'1"
Bedroom 1	2.8 x 3.6m	9'2" x 11'10"
Bedroom 2	2.8 x 3.4m	9'2" x 11'2"
TIA	57.2m ²	615.5ft ²
Balcony	12.0m ²	129.2ft ²

Apartment 109

Kitchen/Living/Dining	9.7 x 5.7m	31'10" x 18'8"
Bedroom 1	4.2 x 3.6m	13'9" x 11'10"
Bedroom 2	2.8 x 3.5m	9'2" x 11'6"
TIA	73.4m ²	789.5ft ²
Balcony 1	12.0m ²	129.2ft ²
Balcony 2	8.0m ²	86.1ft ²

Apartment 110

Kitchen/Living/Dining	3.1 x 8.2m	10'2" x 26'11"
Bedroom 1	2.7 x 3.6m	8'10" x 11'10"
TIA	46.2m ²	497.4ft ²
Balcony	2.0m ²	21.5ft ²

Apartment 111

Kitchen/Living/Dining	3.7 x 5.8m	12'2" x 19'0"
Bedroom 1	2.9 x 3.7m	9'6" x 12'2"
TIA	40.2m ²	432.5ft ²
Balcony	8.0m ²	86.1ft ²

Please note, floorplans and dimensions are taken from architectural drawings and are for guidance only. Dimensions stated are within a tolerance of plus or minus 150mm. Overall dimensions are usually stated and there may be projections into these. Kitchen and bathroom layouts are indicative only.

FLOOR 12

KEY

01 Bed 02 Bed



Apartment 112

Kitchen/Living/Dining	7.5 x 3.2m	24'7" x 10'6"
Bedroom 1	4.2 x 3.4m	13'9" x 11'2"
TIA	50.0m ²	538.1ft ²

Apartment 114

Kitchen/Living/Dining	5.9 x 5.8m	19'4" x 19'0"
Bedroom 1	4.3 x 3.5m	14'1" x 11'6"
Bedroom 2	4.0 x 3.0m	13'2" x 9'10"
TIA	73.4m ²	789.5ft ²

Apartment 116

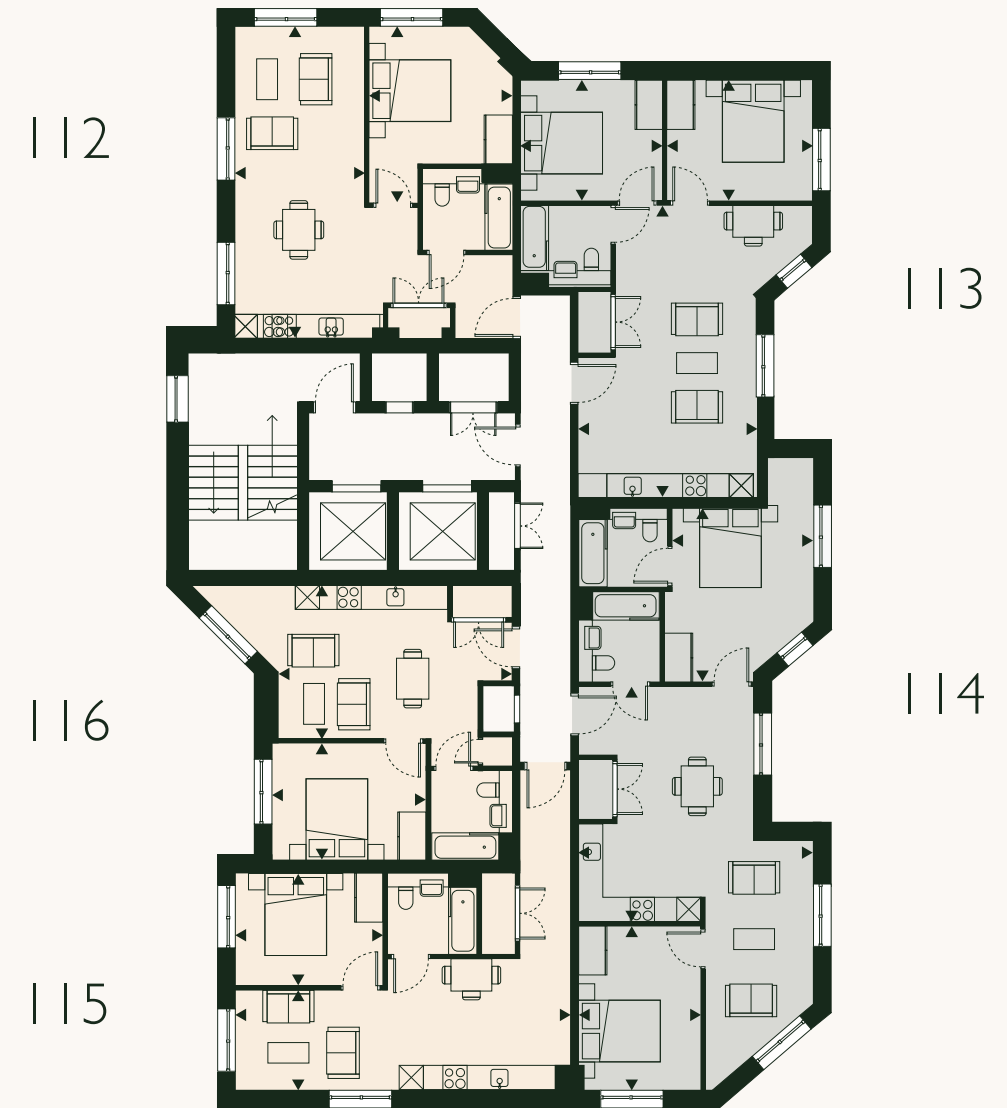
Kitchen/Living/Dining	3.8 x 5.8m	12'6" x 19'0"
Bedroom 1	2.9 x 3.7m	9'6" x 12'2"
TIA	40.2m ²	432.5ft ²

Apartment 113

Kitchen/Living/Dining	7.2 x 4.3m	23'8" x 14'1"
Bedroom 1	2.8 x 3.6m	9'2" x 11'10"
Bedroom 2	2.8 x 3.5m	9'2" x 11'6"
TIA	57.2m ²	615.5ft ²

Apartment 115

Kitchen/Living/Dining	2.4 x 8.2m	7'11" x 16'11"
Bedroom 1	2.8 x 3.6m	9'2" x 11'10"
TIA	46.2m ²	497.4ft ²



Please note, floorplans and dimensions are taken from architectural drawings and are for guidance only. Dimensions stated are within a tolerance of plus or minus 150mm. Overall dimensions are usually stated and there may be projections into these. Kitchen and bathroom layouts are indicative only.

WWW.JOSEPH-MEWS.COM