



# VELOCITY

TOWER

a development by



sold by:

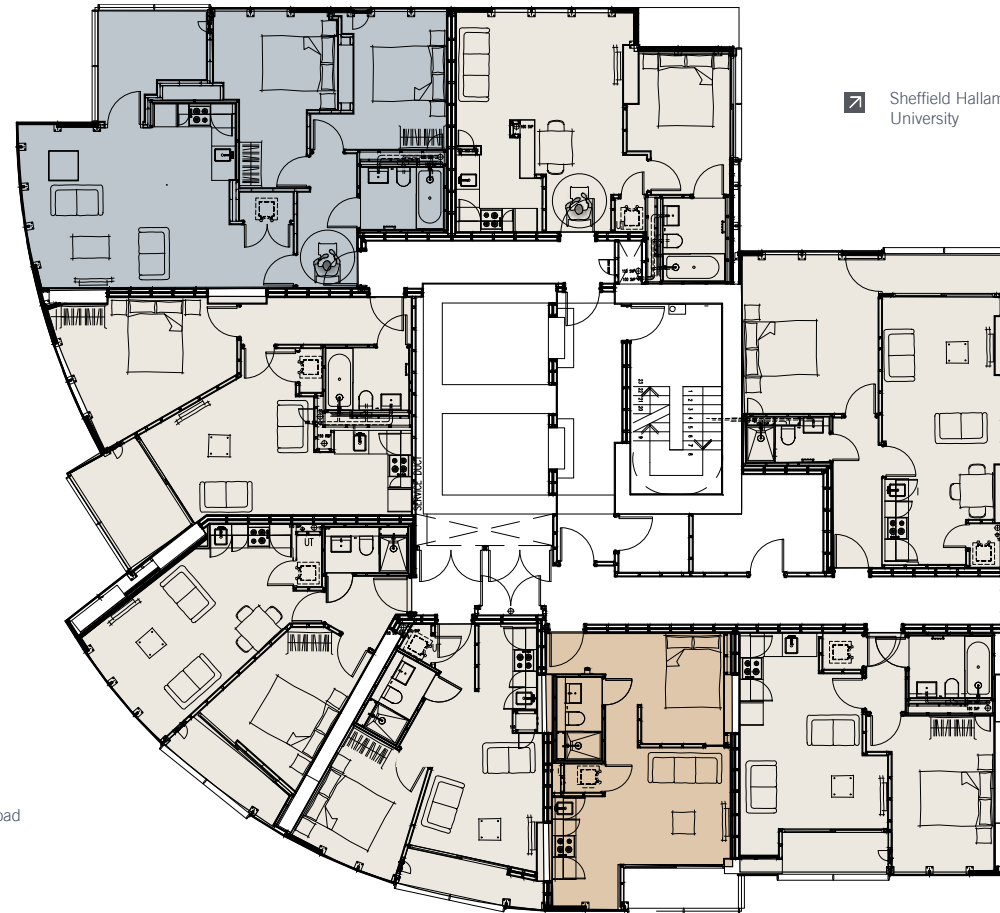


The University of Sheffield

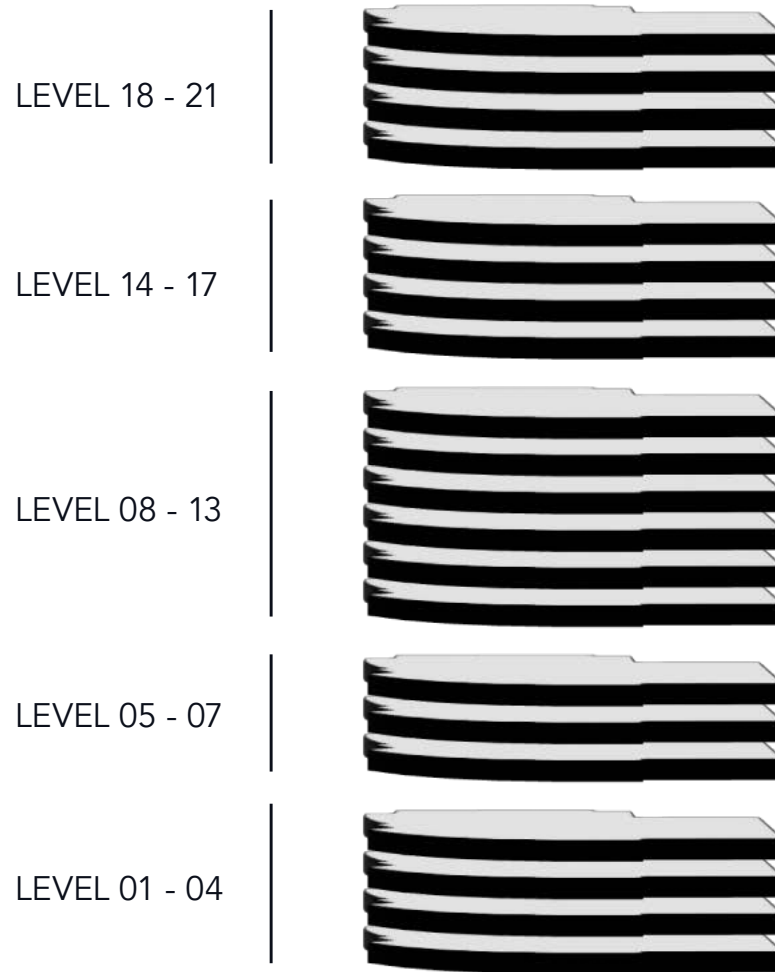
City Centre

Sheffield Hallam  
University

Ecclesall Road



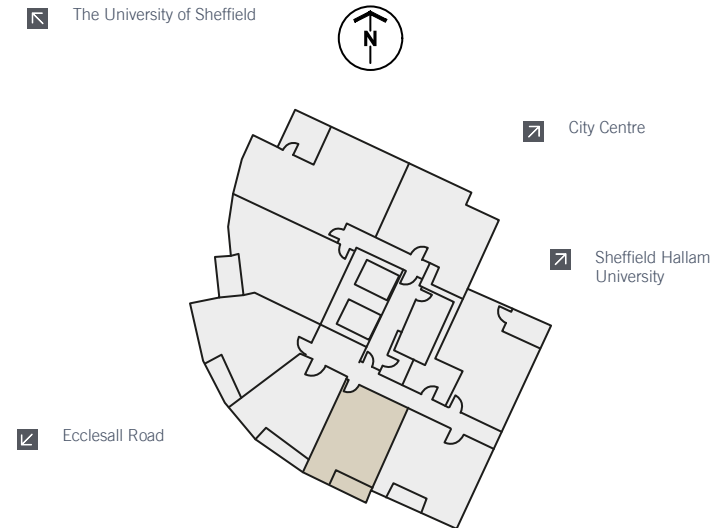
- 2 Bedroom
- 1 Bedroom
- Studio



**STUDIO FLAT**

Type A | Level 1-20

Apartments 01, 9, 17, 25, 33, 41, 49, 57, 65, 73, 81, 89, 97, 105, 113, 121, 129, 137, 145 & 153



Internal Area	33.9 sq.m.	364.9 sq.ft.
Balcony	3.4 sq.m.	36.6 sq.ft.
<b>Total Area</b>	<b>37.30 sq.m.</b>	<b>401.50 sq.ft.</b>

**ONE BEDROOM**

Type B | Level 1-20

Apartments 02, 10, 18, 26, 34, 42, 50, 58, 66, 74, 82, 90, 98, 106, 114, 122, 130, 138, 146 & 154



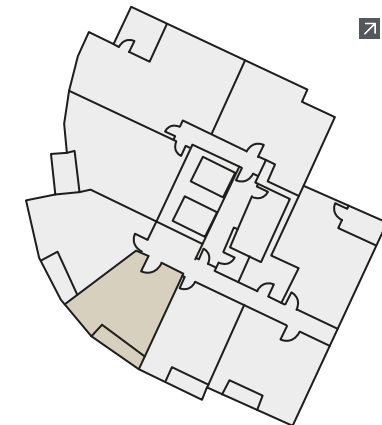
 The University of Sheffield



 City Centre

 Sheffield Hallam University

 Ecclesall Road



Internal Area	36.0 sq.m.	387.5 sq.ft.
Balcony	3.7 sq.m.	39.8 sq.ft.
<b>Total Area</b>	<b>39.7 sq.m.</b>	<b>427.33 sq.ft.</b>

**ONE BEDROOM**

Type C | Level 1-20

Apartments 03, 11, 19, 27, 35, 43, 51, 59, 67, 75, 83, 91, 99, 107, 115, 123, 131, 139, 147 & 155



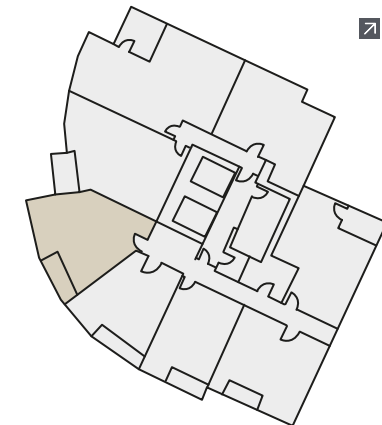
 The University of Sheffield



 City Centre

 Sheffield Hallam University

 Ecclesall Road



Internal Area	42.3 sq.m.	455.32 sq.ft.
Balcony	4.1 sq.m.	44.1 sq.ft.
<b>Total Area</b>	<b>46.4 sq.m.</b>	<b>499.45 sq.ft.</b>

**ONE BEDROOM**

Type D | Level 1 - 4 & 15  
Apartments 04, 12, 20, 28 & 116



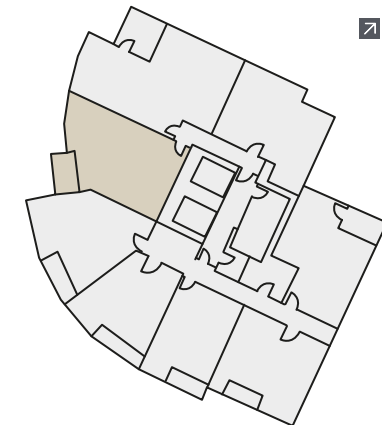
 The University of Sheffield



 City Centre

 Sheffield Hallam University

 Ecclesall Road

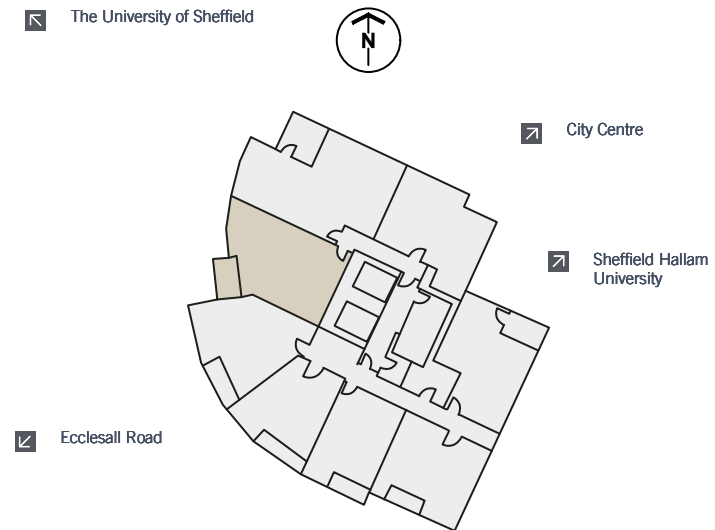


Internal Area	51.50 sq.m.	554.35 sq.ft.
Balcony	6.2 sq.m.	66.7 sq.ft.
<b>Total Area</b>	<b>57.70 sq.m.</b>	<b>621.08 sq.ft.</b>

**ONE BEDROOM**

Type D1 | Level 5-20

Apartments 36, 44, 52, 60, 68, 76, 84, 92, 100, 108, 124, 132, 140, 148 & 156



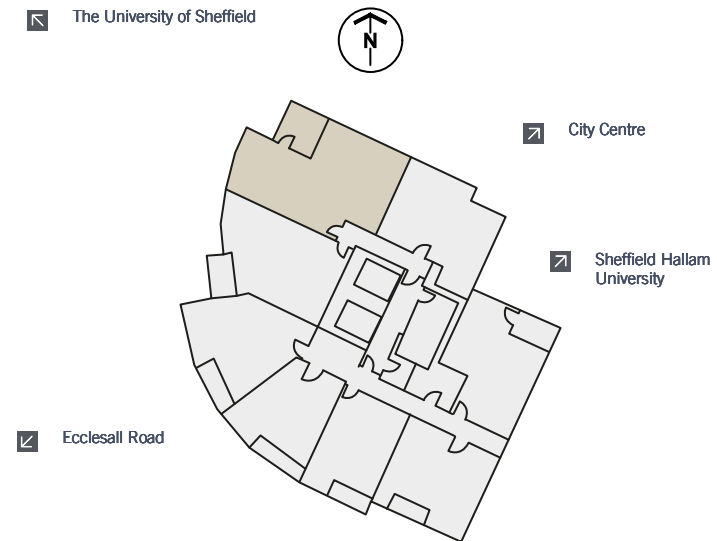
Internal Area	53.40 sq.m.	574.80 sq.ft.
Balcony	6.2 sq.m.	66.7 sq.ft.
<b>Total Area</b>	<b>59.65 sq.m.</b>	<b>641.53 sq.ft.</b>



**TWO BEDROOM**

Type E | Level 1-20

Apartments 05, 13, 21, 29, 37, 45, 53, 61, 69, 77, 85, 93, 101, 109, 117, 125, 133, 141, 149 & 157



Internal Area	69.63 sq.m.	749.50 sq.ft.
Balcony	7.3 sq.m.	78.6 sq.ft.
<b>Total Area</b>	<b>76.93 sq.m.</b>	<b>828.07 sq.ft.</b>

**ONE BEDROOM**

Type F | Level 1-13

Apartments 06, 14, 22,30, 38, 46, 54, 62, 70, 78, 86, 94, 102



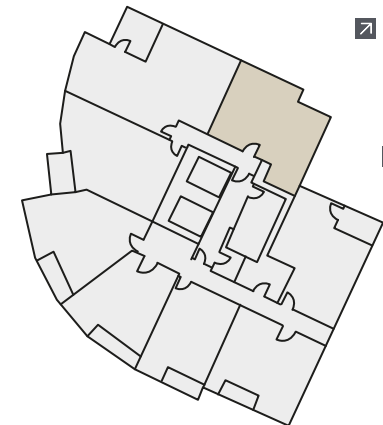
 The University of Sheffield



 City Centre

 Sheffield Hallam University

 Ecclesall Road



Internal Area	45.42 sq.m.	488.9 sq.ft.
Balcony	00.00 sq.m.	00.00 sq.ft.
Total Area	45.42 sq.m.	488.9 sq.ft.

**ONE BEDROOM**

Type F1 | Level 14-20  
Apartments 110, 118, 126, 134, 142, 150 & 158



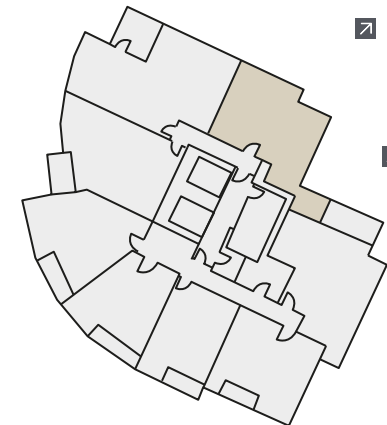
 The University of Sheffield



 City Centre

 Sheffield Hallam University

 Ecclesall Road



Internal Area	50.22 sq.m.	540.57 sq.ft.
Balcony	00.00 sq.m.	00.00 sq.ft.
Total Area	50.22 sq.m.	540.57 sq.ft.

**ONE BEDROOM**

Type G | Level 1-4 and 8-13  
Apartments 07, 15, 23, 31, 63, 71, 79, 87, 95 & 103



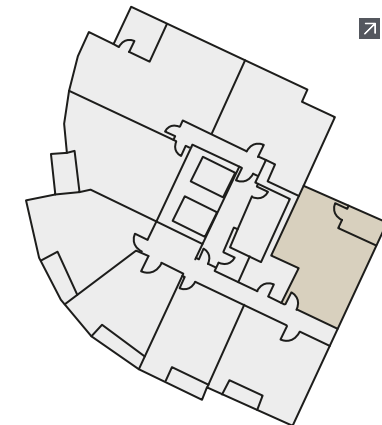
 The University of Sheffield



 City Centre

 Sheffield Hallam University

 Ecclesall Road



Internal Area	50.80 sq.m.	546.81 sq.ft.
Balcony	3.7 sq.m.	39.8 sq.ft.
<b>Total Area</b>	<b>54.5 sq.m.</b>	<b>586.64 sq.ft.</b>



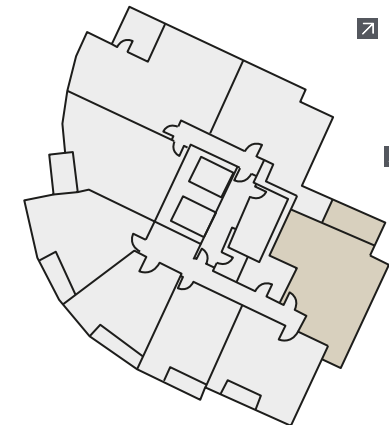
 The University of Sheffield



 City Centre

 Sheffield Hallam University

 Ecclesall Road



Internal Area	64.50 sq.m.	694.28 sq.ft.
Balcony	4.4 sq.m.	47.4 sq.ft.
<b>Total Area</b>	<b>68.9 sq.m.</b>	<b>741.64 sq.ft.</b>

**ONE BEDROOM**

Type G2 | Level 18-20  
Apartments 143, 151 & 159



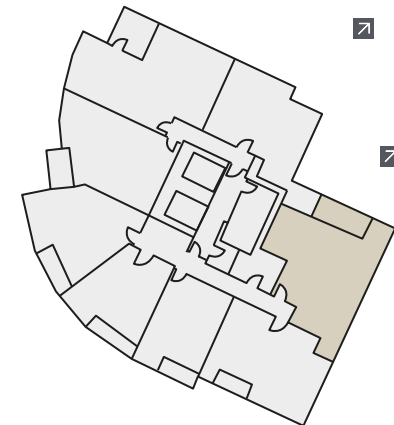
 The University of Sheffield



 City Centre

 Sheffield Hallam University

 Ecclesall Road



Internal Area	68.26 sq.m.	734.75 sq.ft.
Balcony	5.1 sq.m.	54.9 sq.ft.
<b>Total Area</b>	<b>73.36 sq.m.</b>	<b>789.65 sq.ft.</b>

**ONE BEDROOM**

Type G3 | Level 5-7  
Apartments 39, 47 & 55



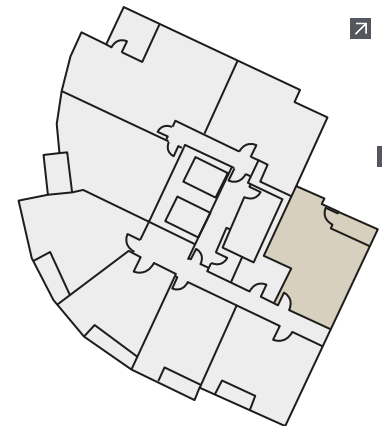
 The University of Sheffield



 City Centre

 Sheffield Hallam University

 Ecclesall Road



Internal Area	49.00 sq.m.	527.44 sq.ft.
Balcony	3.8 sq.m.	40.9 sq.ft.
<b>Total Area</b>	<b>52.8 sq.m.</b>	<b>568.34 sq.ft.</b>

**ONE BEDROOM**

Type H | Level 1-17

Apartments 8, 16, 24, 32, 40, 48, 56, 64, 72, 80, 88, 96, 104, 112, 120, 128 & 136



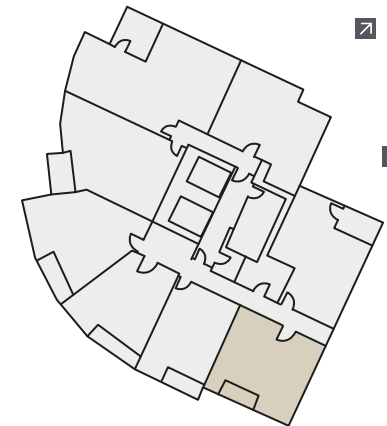
 The University of Sheffield



 City Centre

 Sheffield Hallam University

 Ecclesall Road



Internal Area	42.9 sq.m.	461.78 sq.ft.
Balcony	3.4 sq.m.	36.6 sq.ft.
<b>Total Area</b>	<b>46.3 sq.m.</b>	<b>498.37 sq.ft.</b>



**ONE BEDROOM**

Type H1 | Level 18-20  
Apartments 144, 152 & 160



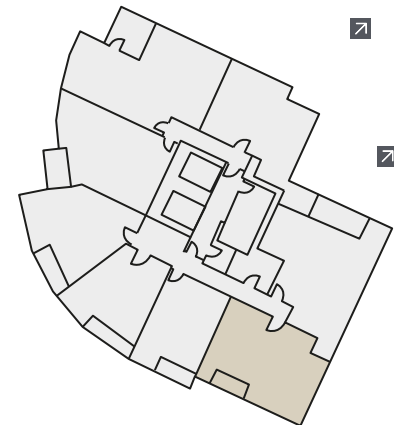
 The University of Sheffield



 City Centre

 Sheffield Hallam University

 Ecclesall Road



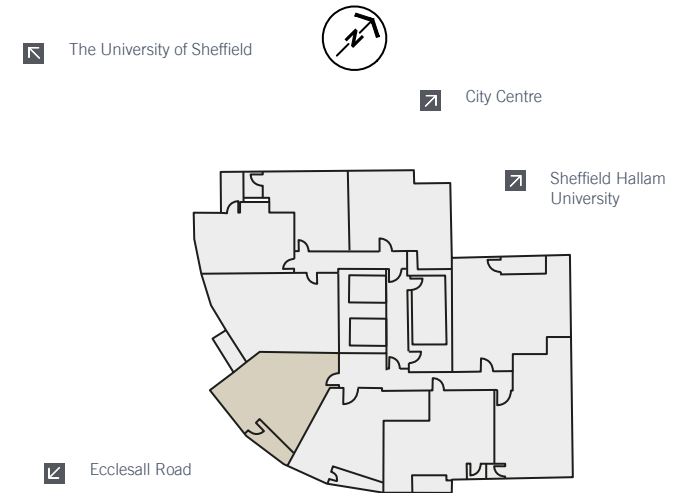
Internal Area	53.2 sq.m.	572.64 sq.ft.
Balcony	3.4 sq.m.	36.6 sq.ft.
<b>Total Area</b>	<b>56.6 sq.m.</b>	<b>609.24 sq.ft.</b>



Internal Area	46.02 sq.m.	495.36 sq.ft.
Balcony	5.0 sq.m.	53.6 sq.ft.
Total Area	51.0 sq.m.	548.96 sq.ft.



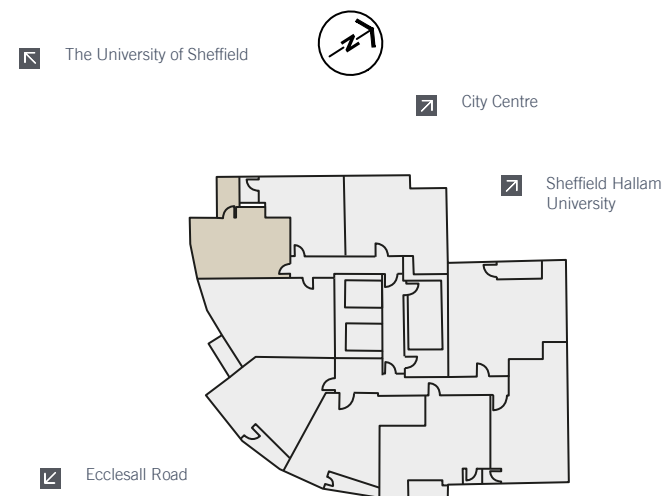
Internal Area	42.89 sq.m.	461.67 sq.ft.
Balcony	3.7 sq.m.	39.9 sq.ft.
<b>Total Area</b>	<b>46.6 sq.m.</b>	<b>501.60 sq.ft.</b>



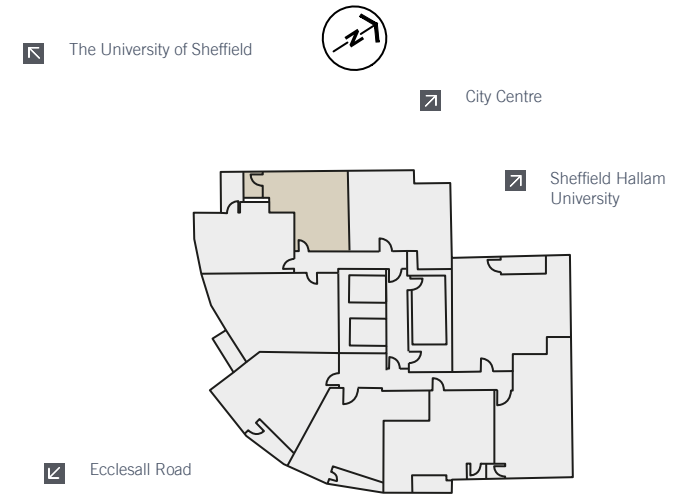
Internal Area	42.66 sq.m.	459.19 sq.ft.
Balcony	4.1 sq.m.	44.1 sq.ft.
Total Area	46.76 sq.m.	503.32 sq.ft.



Internal Area	56.34 sq.m.	606.44 sq.ft.
Balcony	3.2 sq.m.	34.4 sq.ft.
Total Area	59.54 sq.m.	640.89 sq.ft.



Internal Area	34.35 sq.m.	369.74 sq.ft.
Balcony	4.5 sq.m.	48.4 sq.ft.
Total Area	38.85 sq.m.	418.18 sq.ft.



Internal Area	30.9 sq.m.	332.61 sq.ft.
Balcony	3.0 sq.m.	32.3 sq.ft.
<b>Total Area</b>	<b>33.9 sq.m.</b>	<b>364.90 sq.ft.</b>

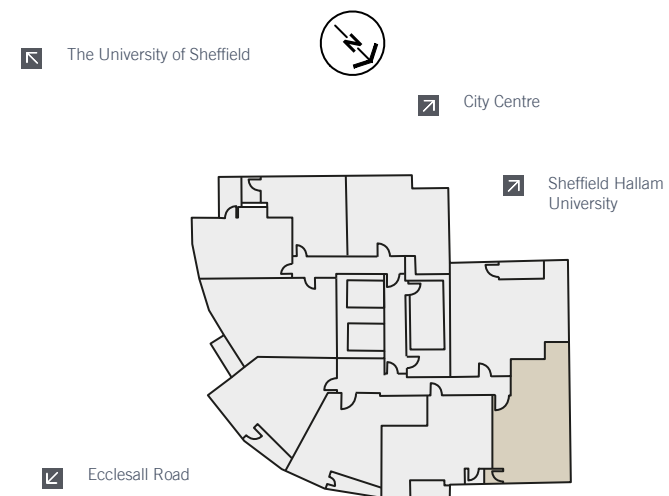


Internal Area	43.52 sq.m.	468.45 sq.ft.
Balcony	2.5 sq.m.	26.9 sq.ft.
<b>Total Area</b>	<b>46.02 sq.m.</b>	<b>495.36 sq.ft.</b>





Internal Area	62.9 sq.m.	677.06 sq.ft.
Balcony	4.0 sq.m.	43.1 sq.ft.
<b>Total Area</b>	<b>66.9 sq.m.</b>	<b>720.11 sq.ft.</b>



Internal Area	49.65 sq.m.	534.43 sq.ft.
Balcony	1.6 sq.m.	16.7 sq.ft.
<b>Total Area</b>	<b>51.20 sq.m.</b>	<b>551.12 sq.ft.</b>



VELOCITY  
TOWER



**Contact our offices**

United Kingdom +44 (0)161 322 2222

Hong Kong +852 3157 0896

Shanghai +86 21 5243 520

Email: [sales@selectproperty.com](mailto:sales@selectproperty.com)

[selectproperty.com](http://selectproperty.com)